

Interaktives Quiz zur Abklärung von Mikroverkalkungen

28. Februar 2009

4. Nordstädter Workshop für

minimal invasive Mammadiagnostik

Regine Rathmann

Dr. Beate Richter



Institut für
PATHOLOGIE



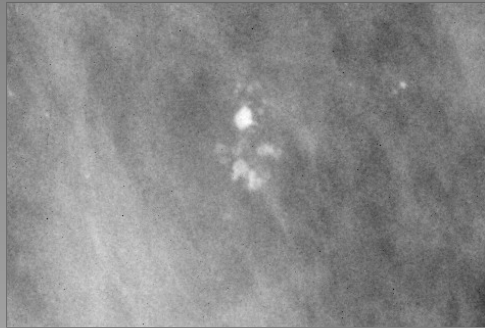
Mikrokalk



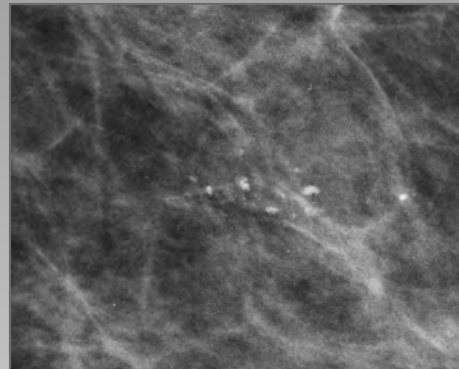
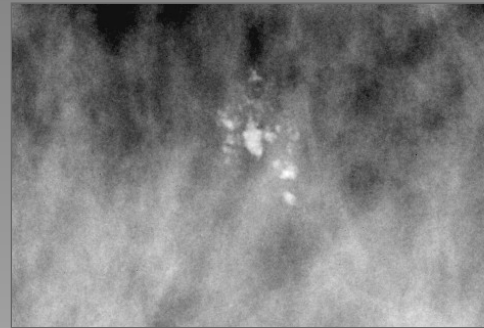
- gutartig? - bösartig?



DCIS G3

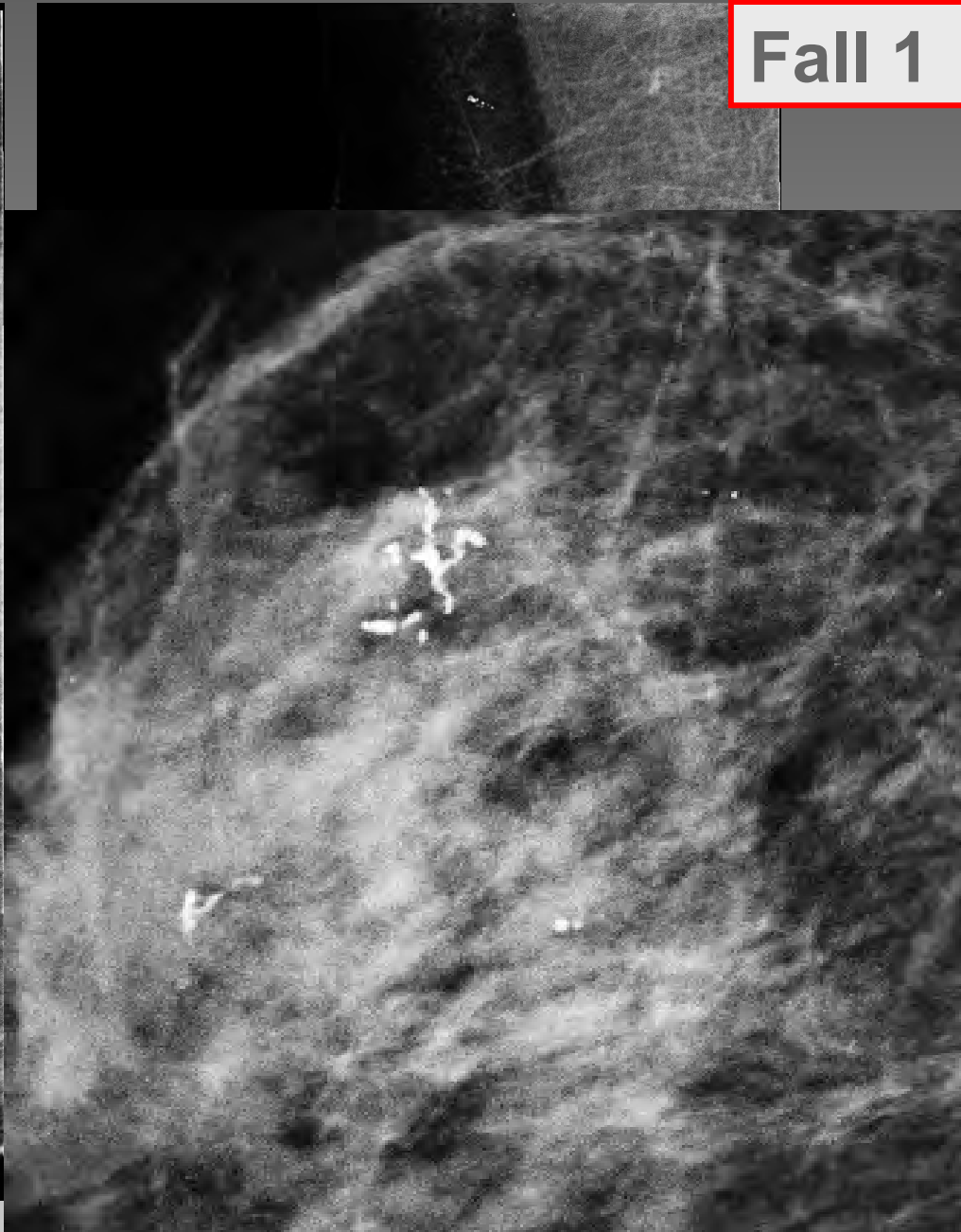
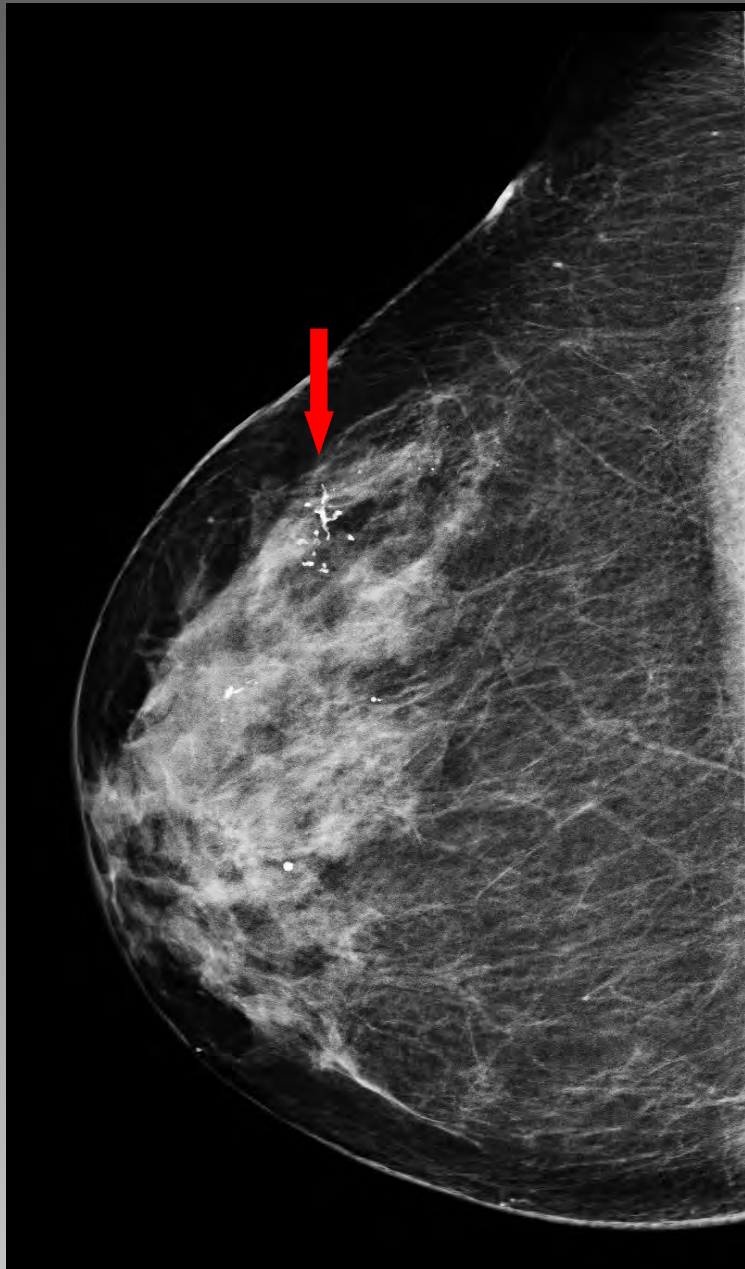


Fibroadenom



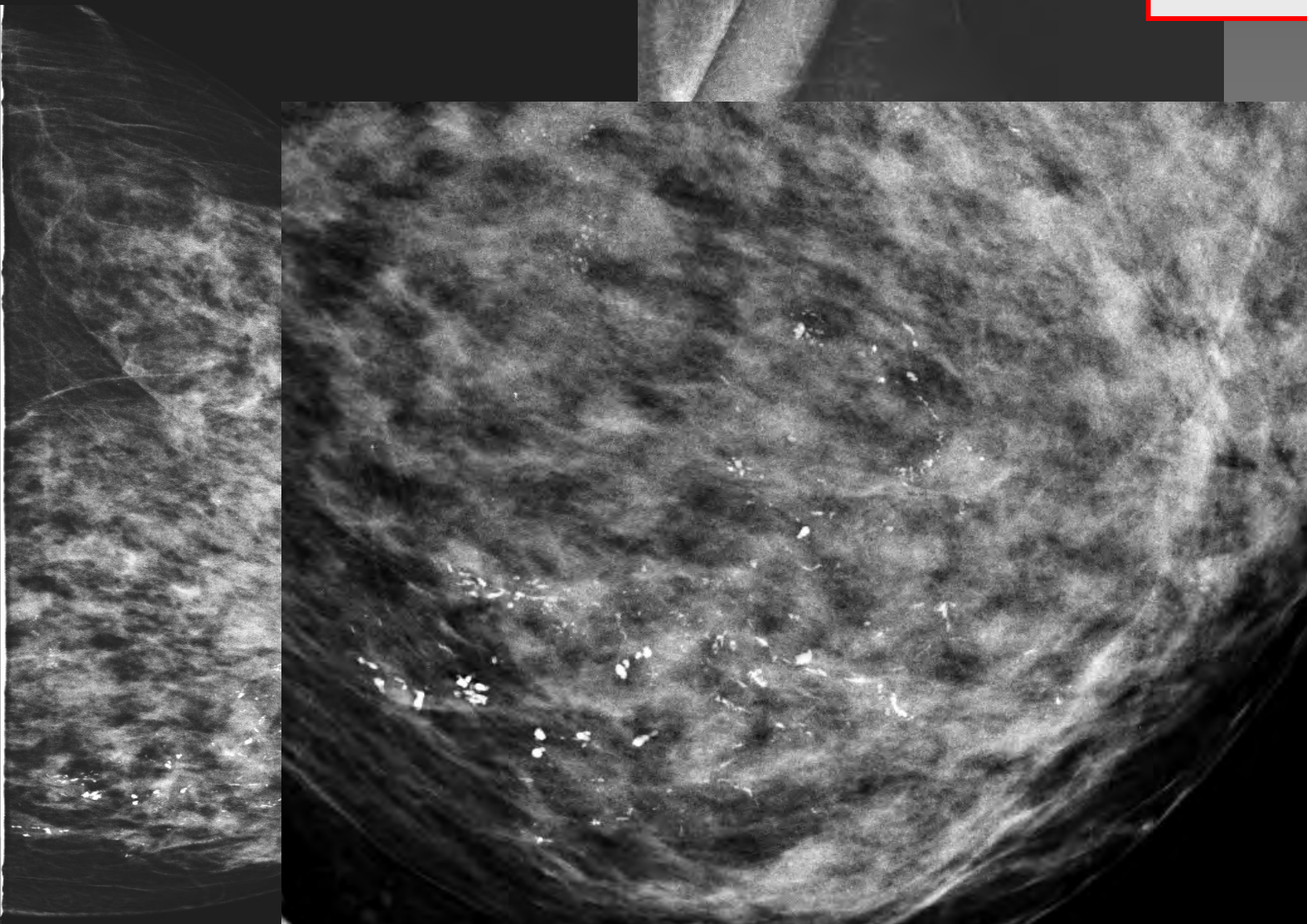
Invasiv-duktales Karzinom

Fall 1



- **Z. n. Quadrantenresektion 1989**
- **Histologie: benigne, Mastopathie Grad II nach Prechtel**
- **seit 2000 keine Änderung des Kalkes
in der Mammographie**

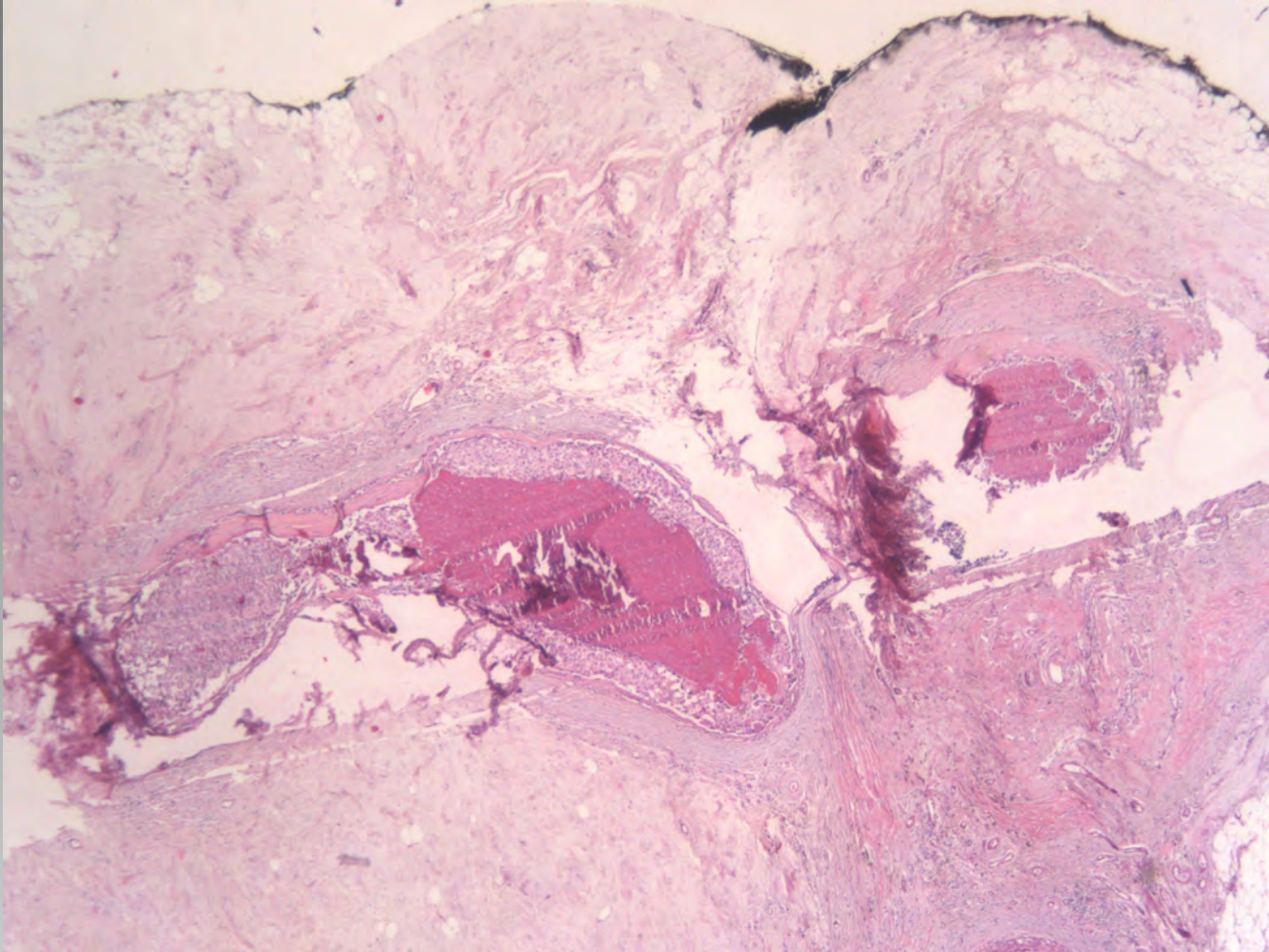
Fall 2





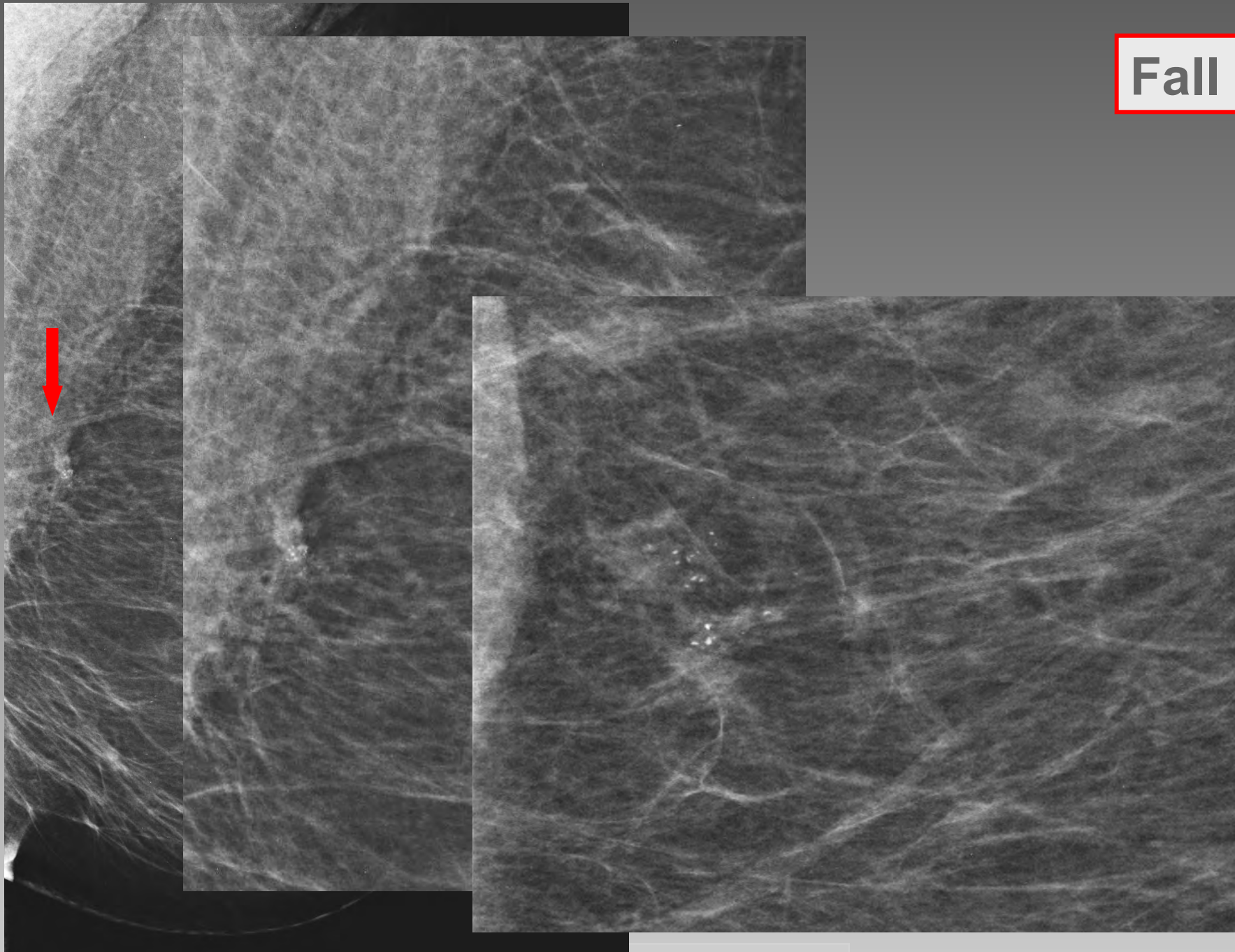
B-Klassifikation 5a; DCIS, G3 high grade mit komedoartigen Nekrosen und Mikrokalk

Fall 2



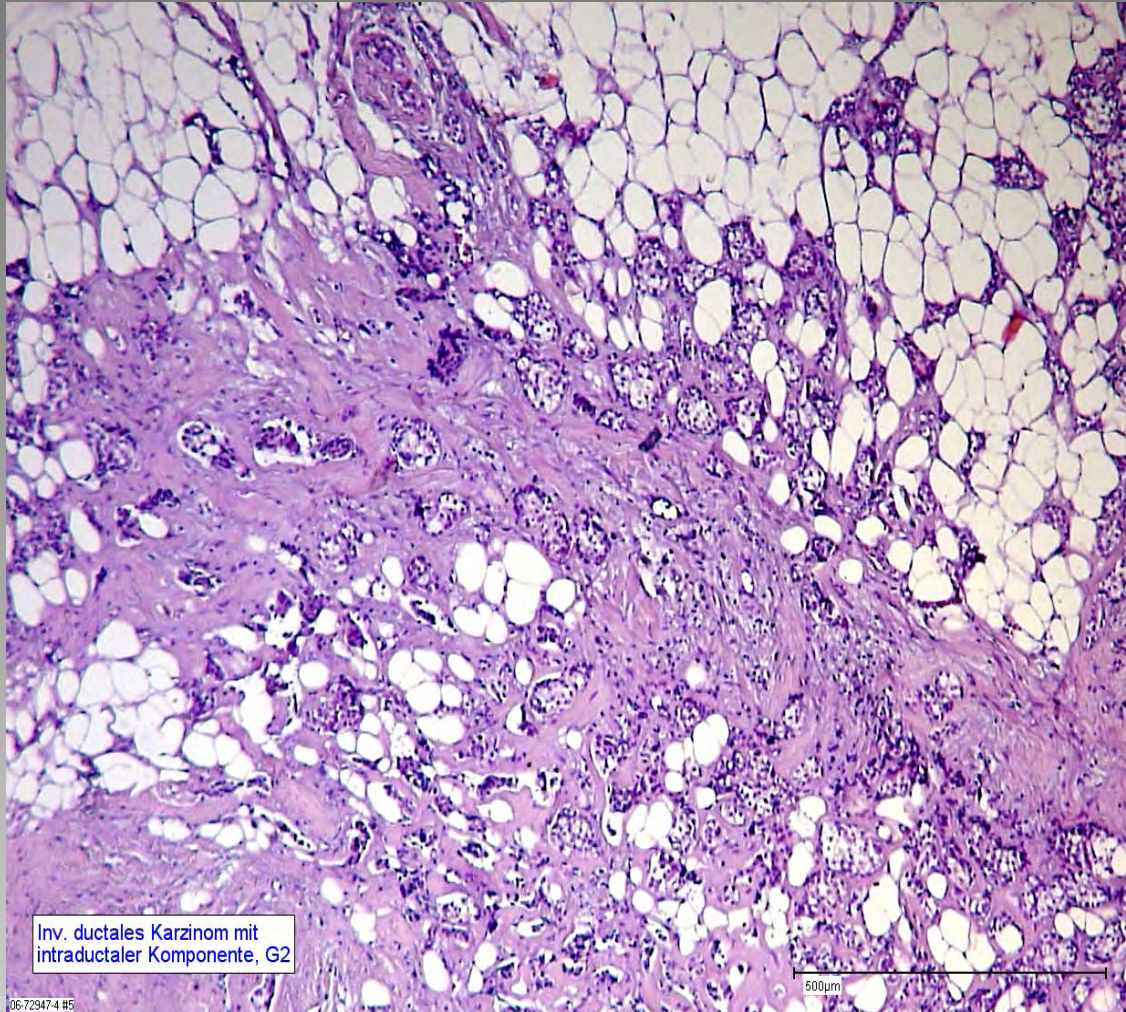
H 09-6469

Fall 3

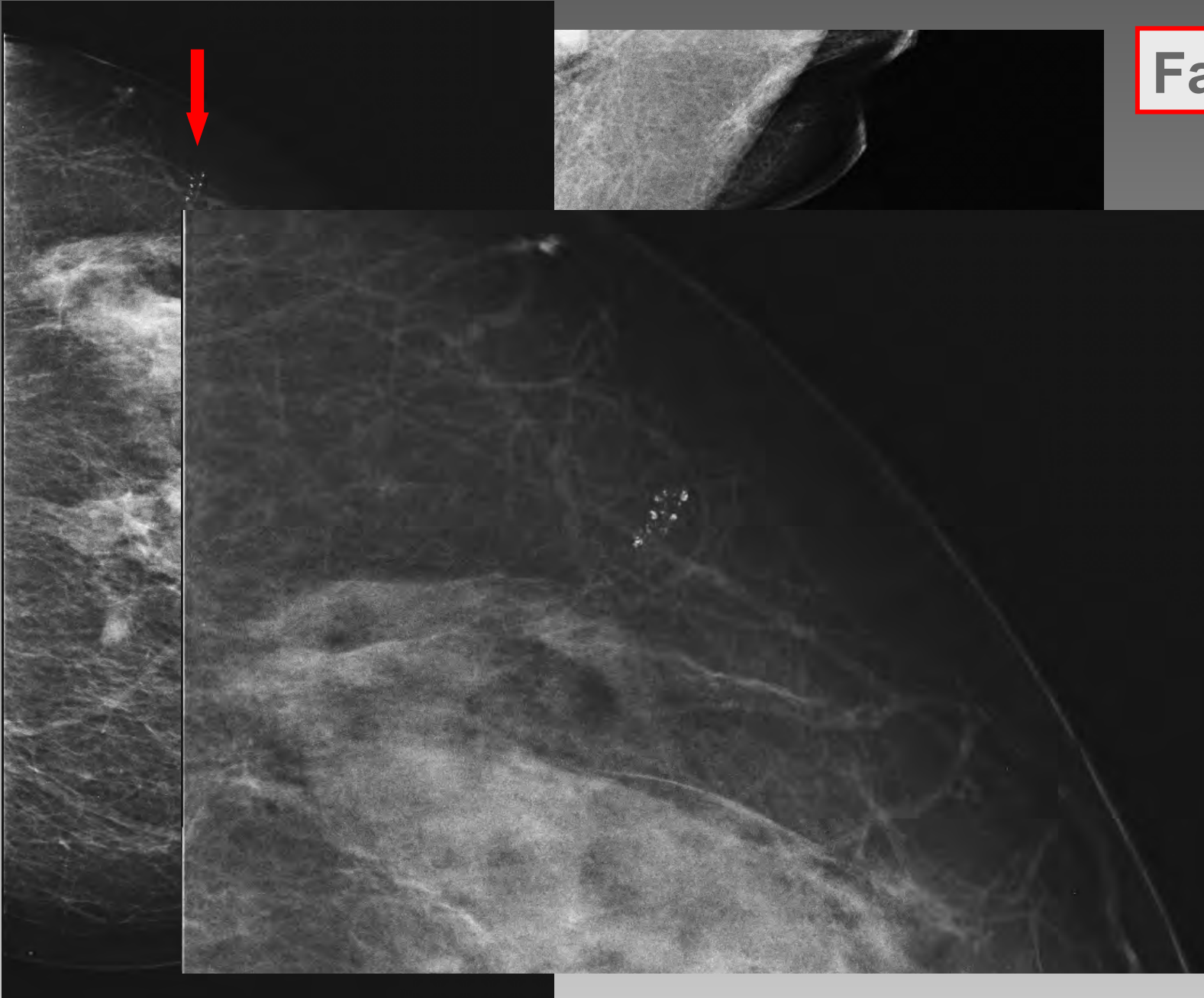




B5b **invasiv duktales Karzinom G2**

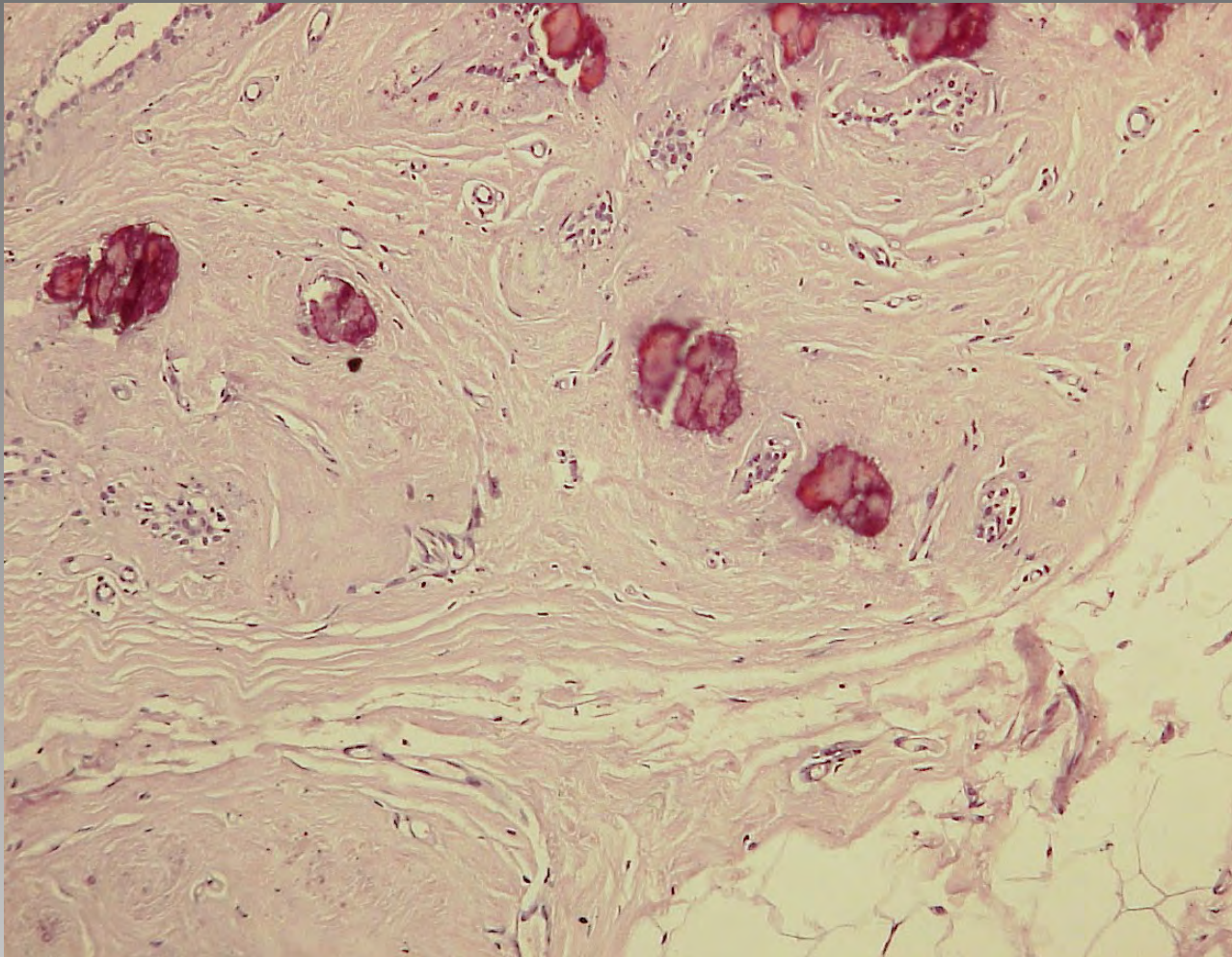


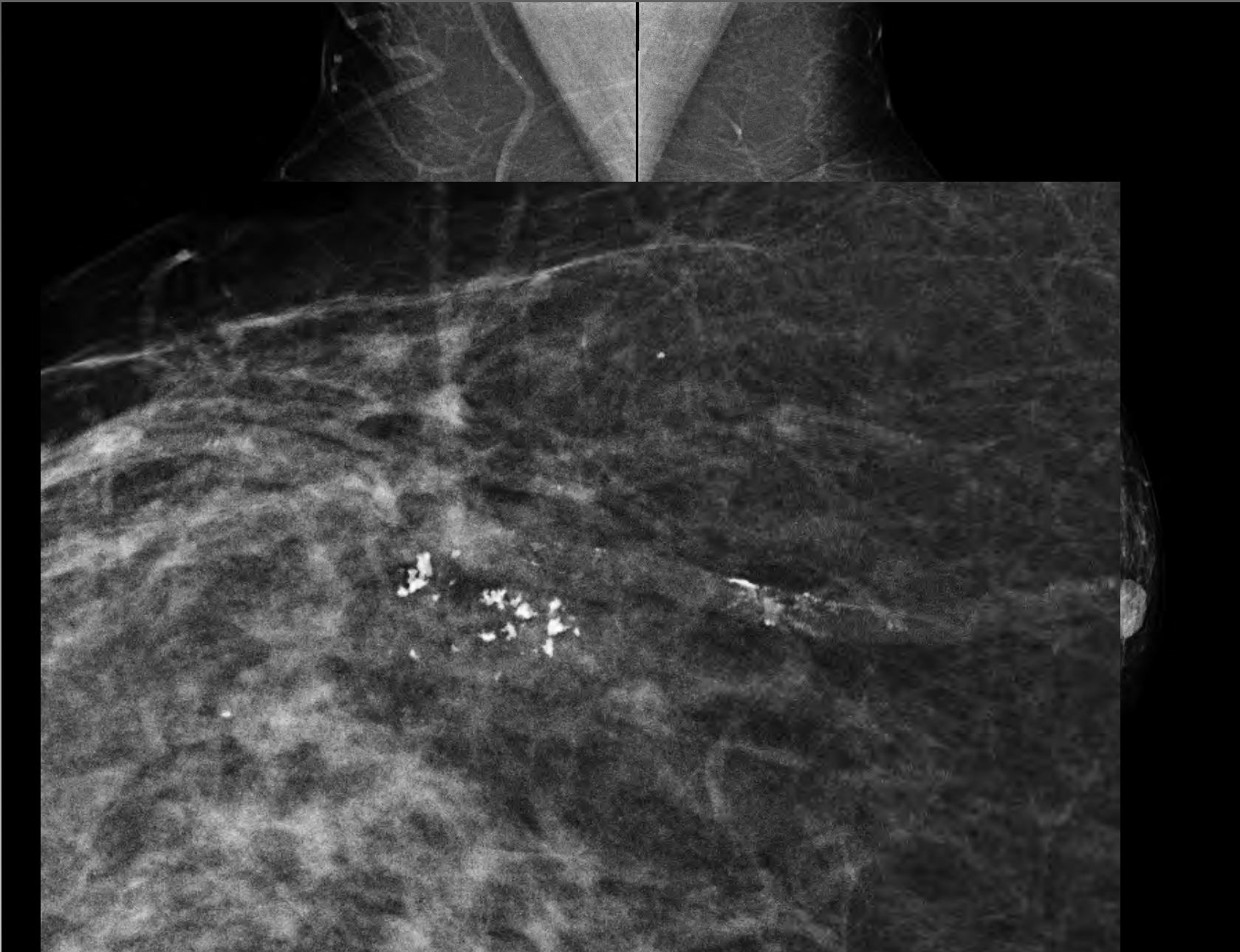
Fall 4





B 2 regressiv verändertes Fibroadenom





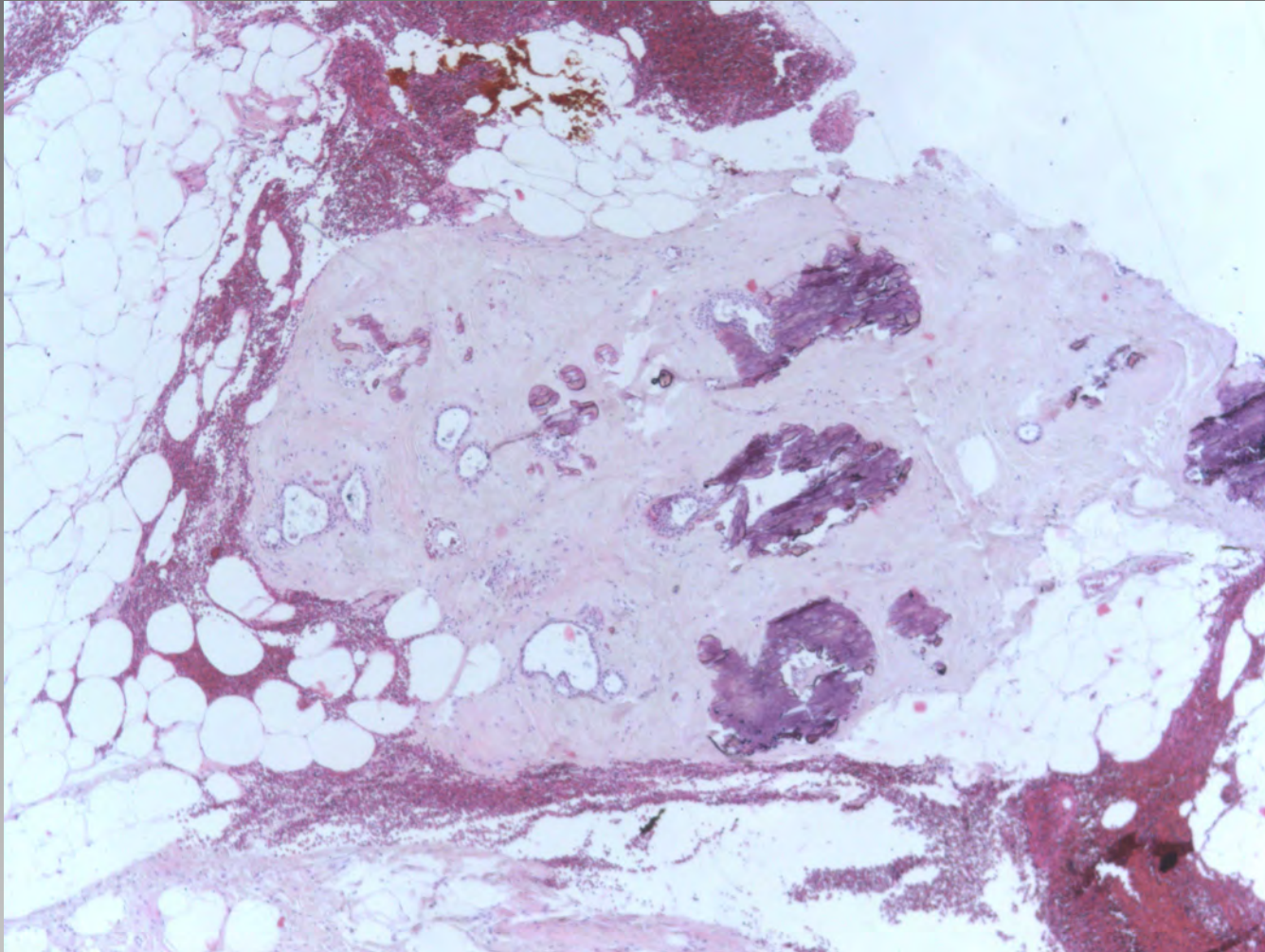
[Empty white box for caption]

Fall 5



B 2 regressiv verändertes Fibroadenom

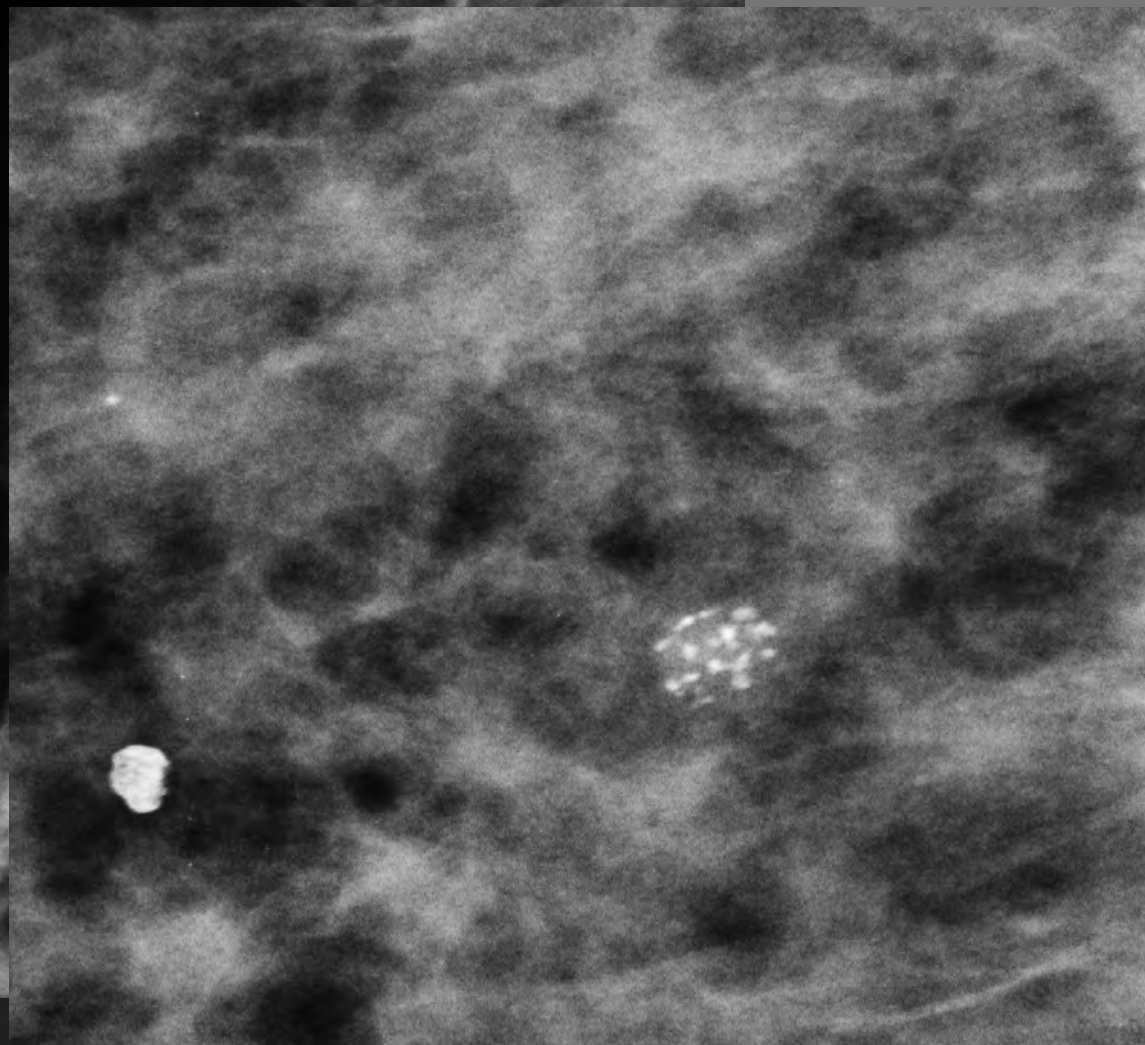
Fall 5



H 08-37965

R-mi

Fall6





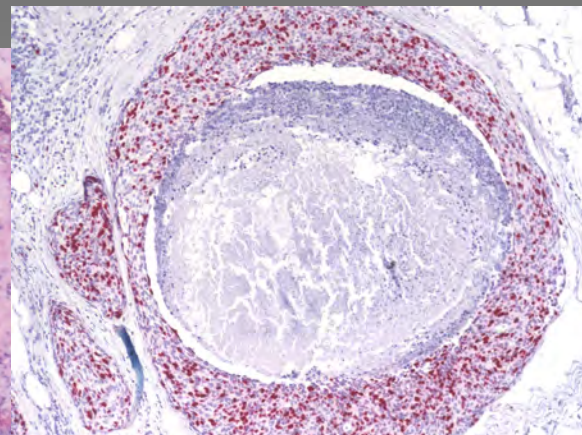
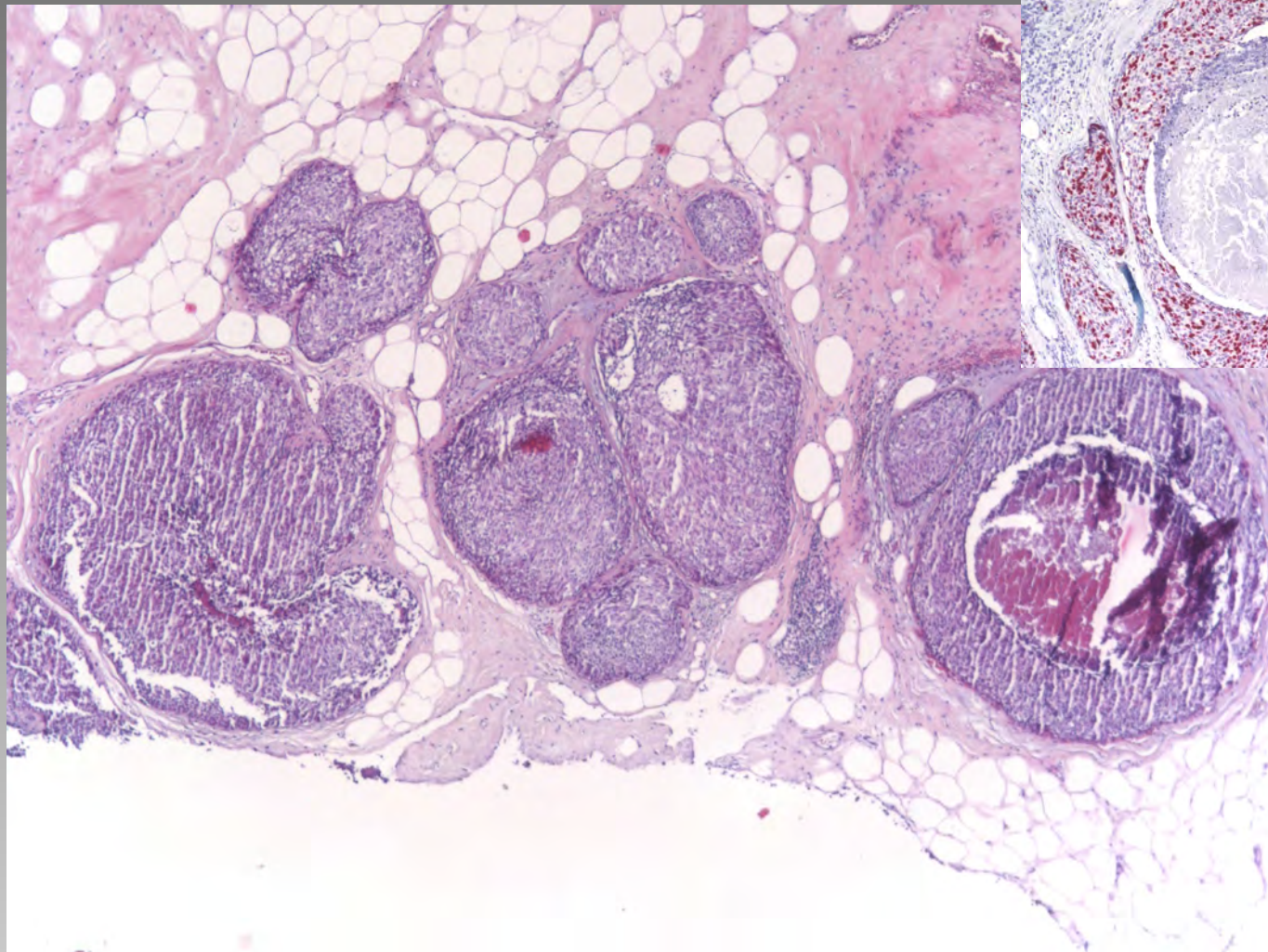
VB

B 5a

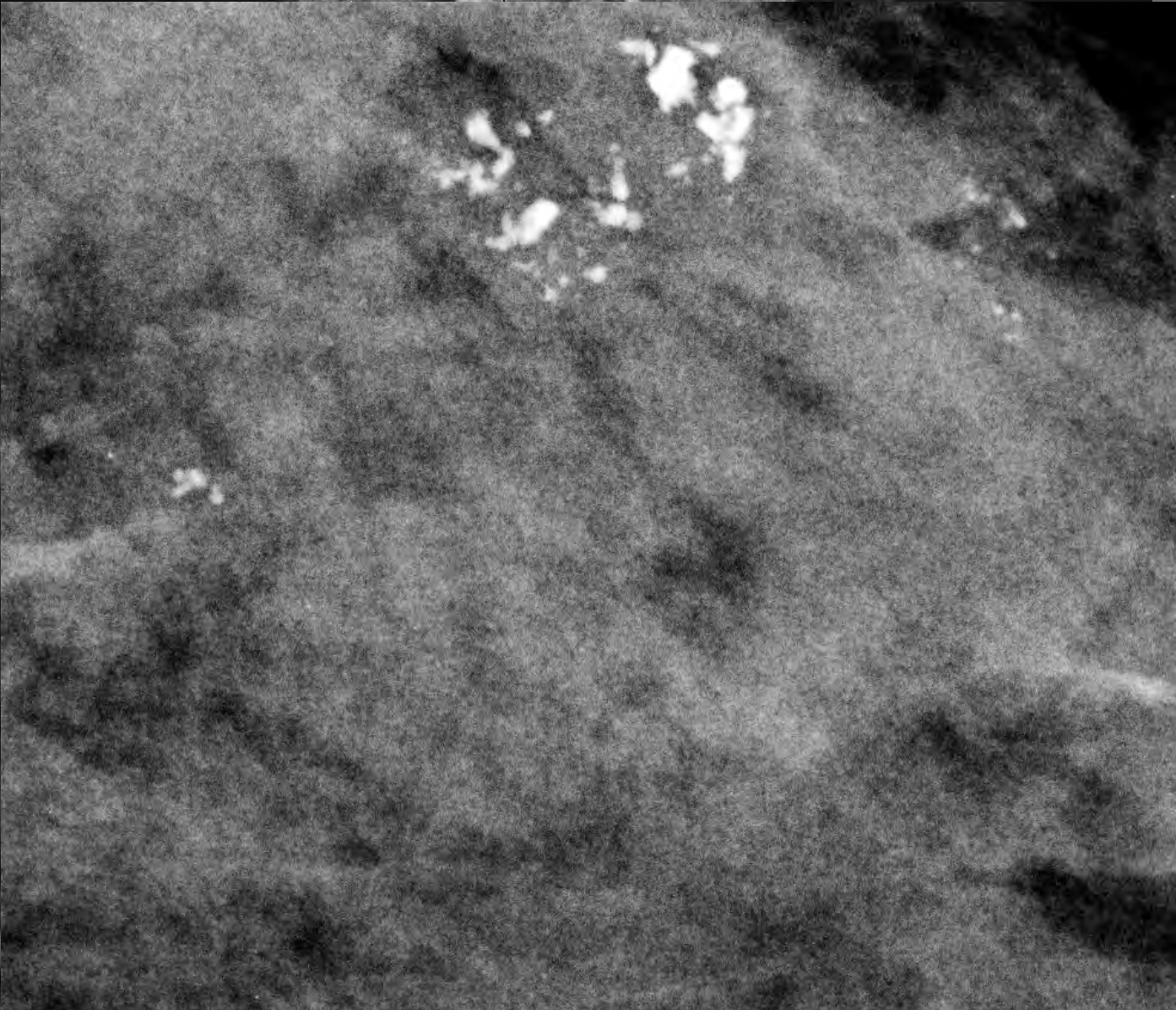
DCIS G3

Op-Präperat

pTis 17 mm G3 pNx



Fall 7





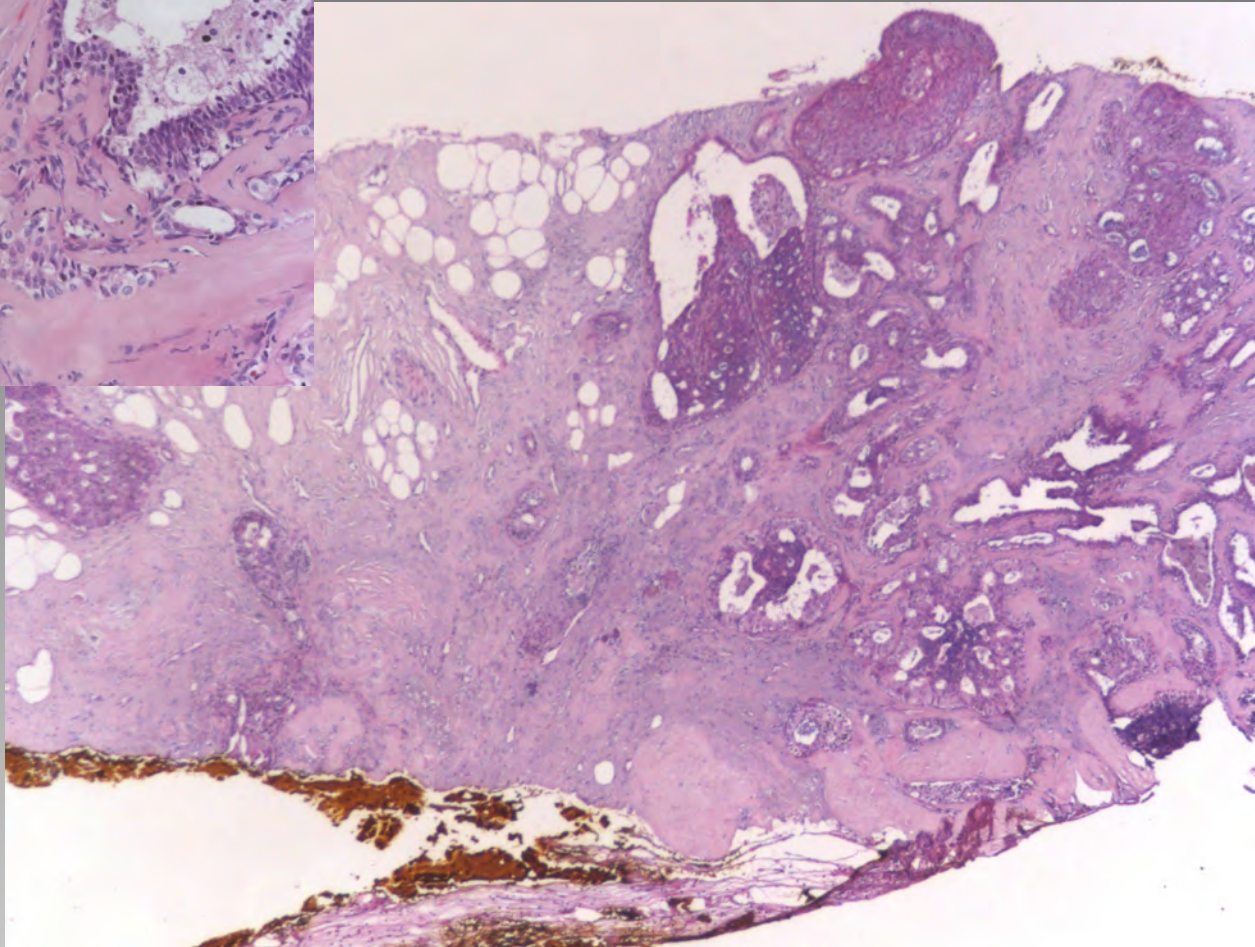
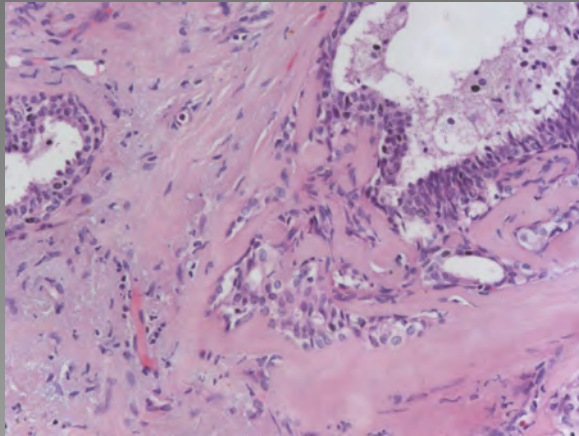
VB

B 5c; V.a. inv.dukt. Ca und DCIS G3

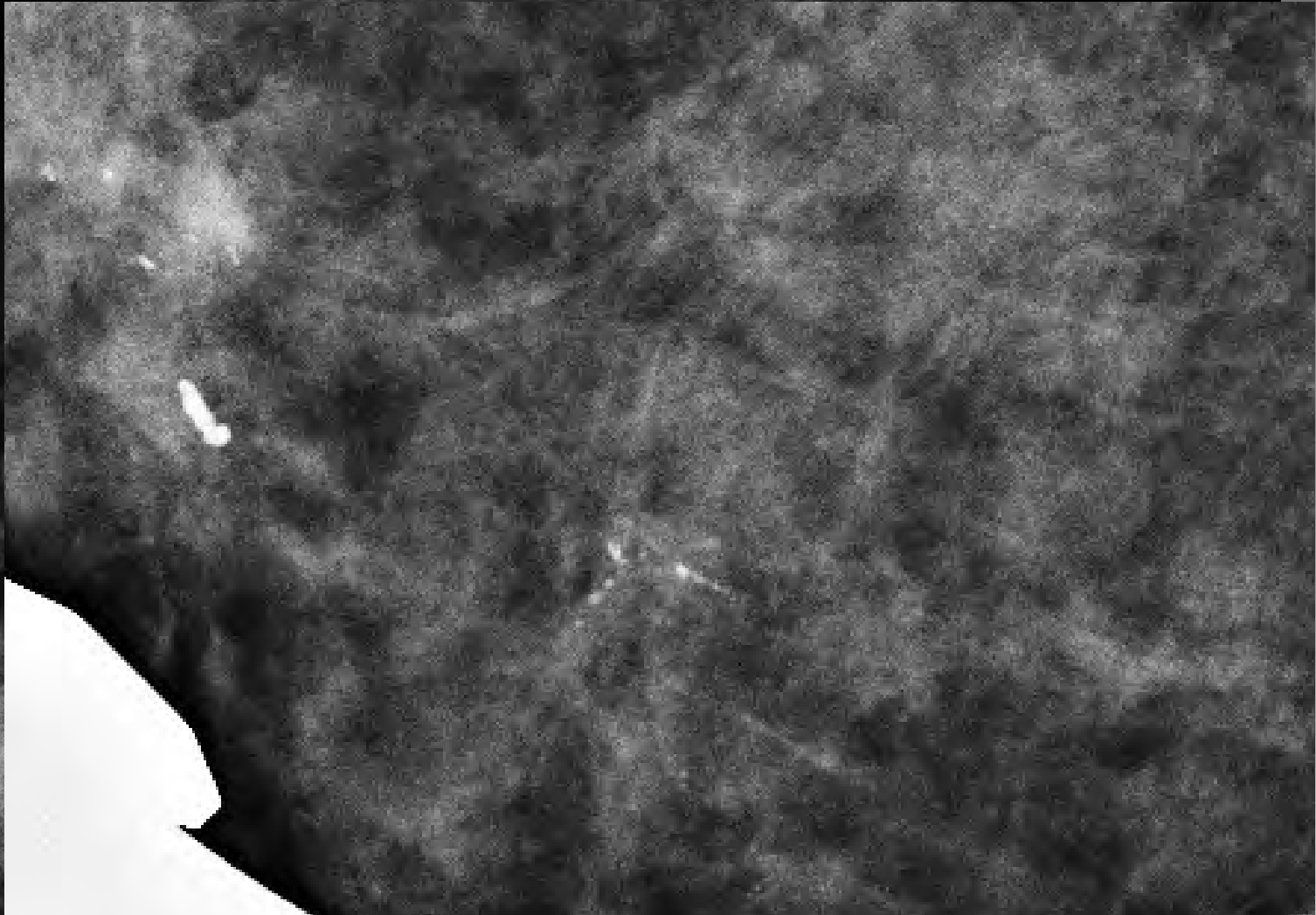
Op-Präperat

pTis 23 mm G3 pN0 (0/2sn)

Fall 7



R-n





VB

B 5a

DCIS

G3

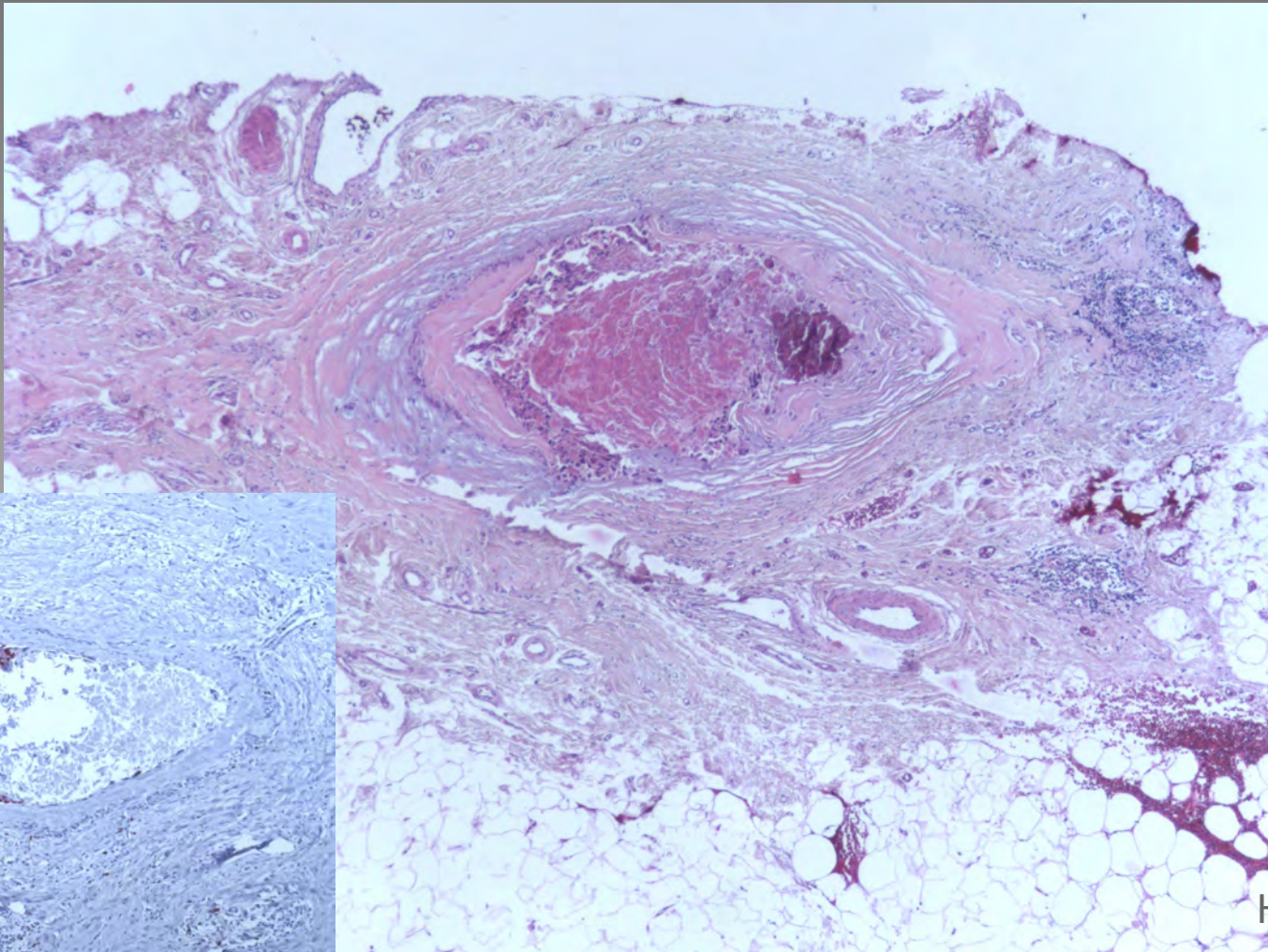
Fall 8

Op-Präperat

pTis

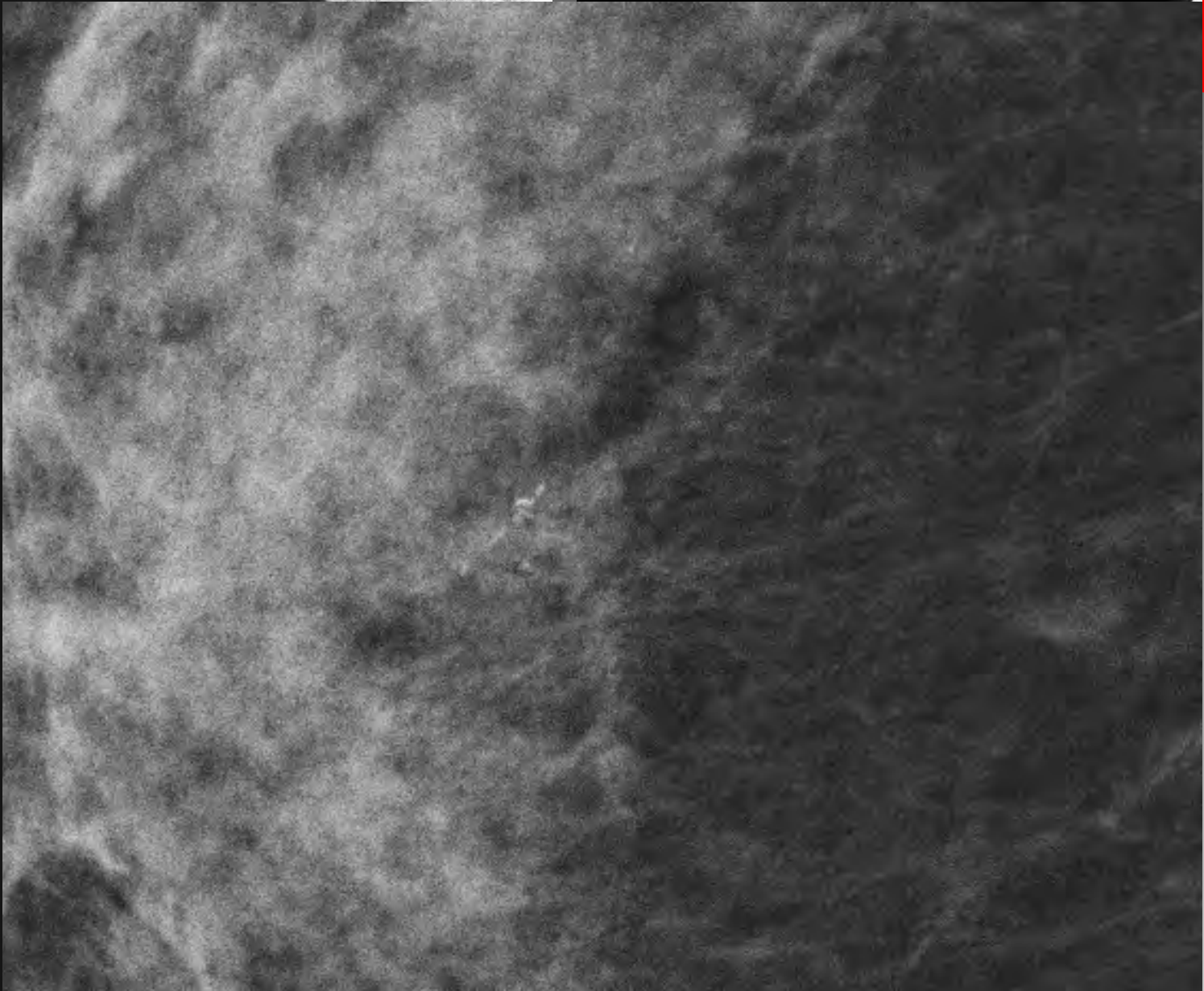
50 mm

G3



H 08-43875

Fall 9

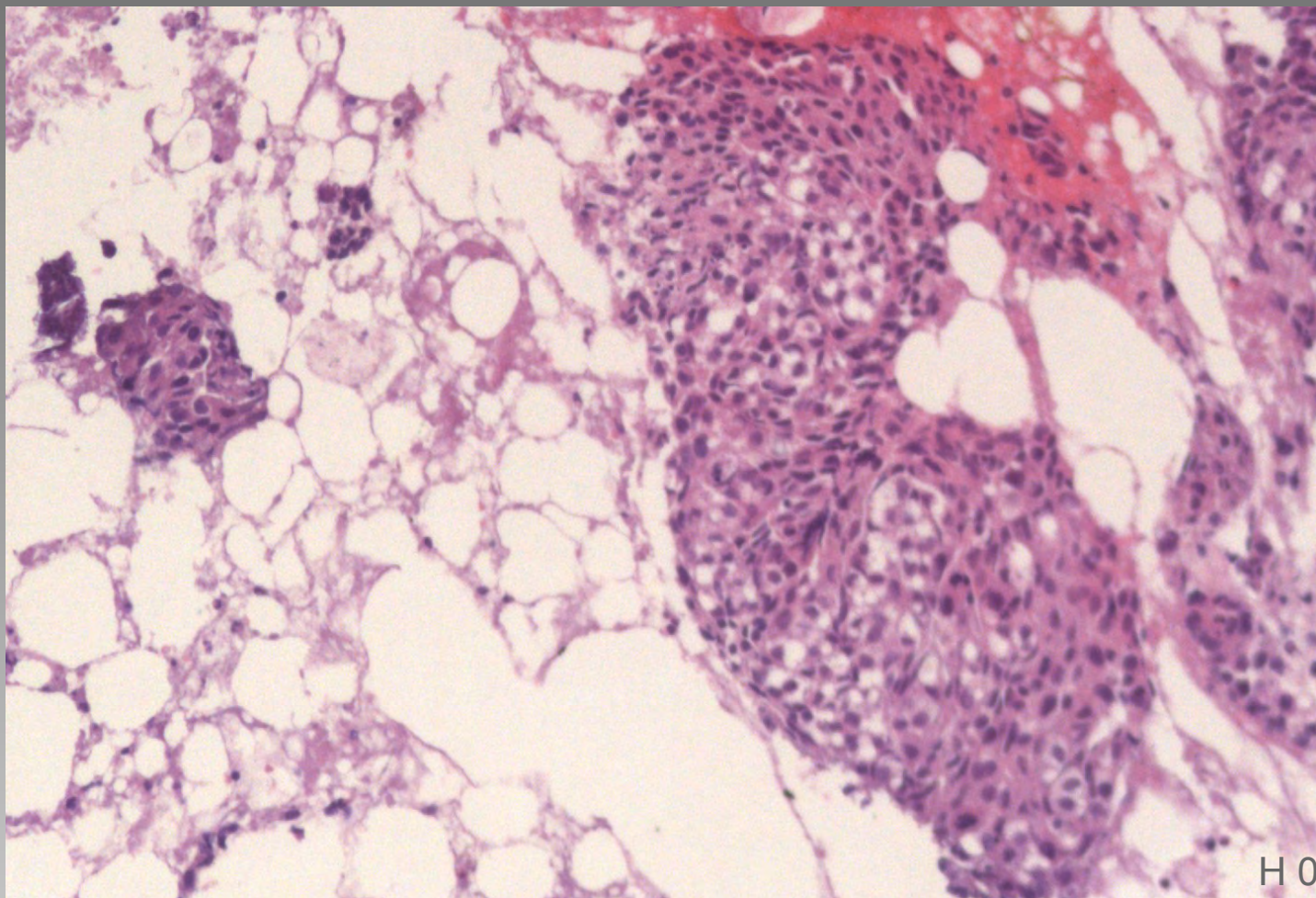




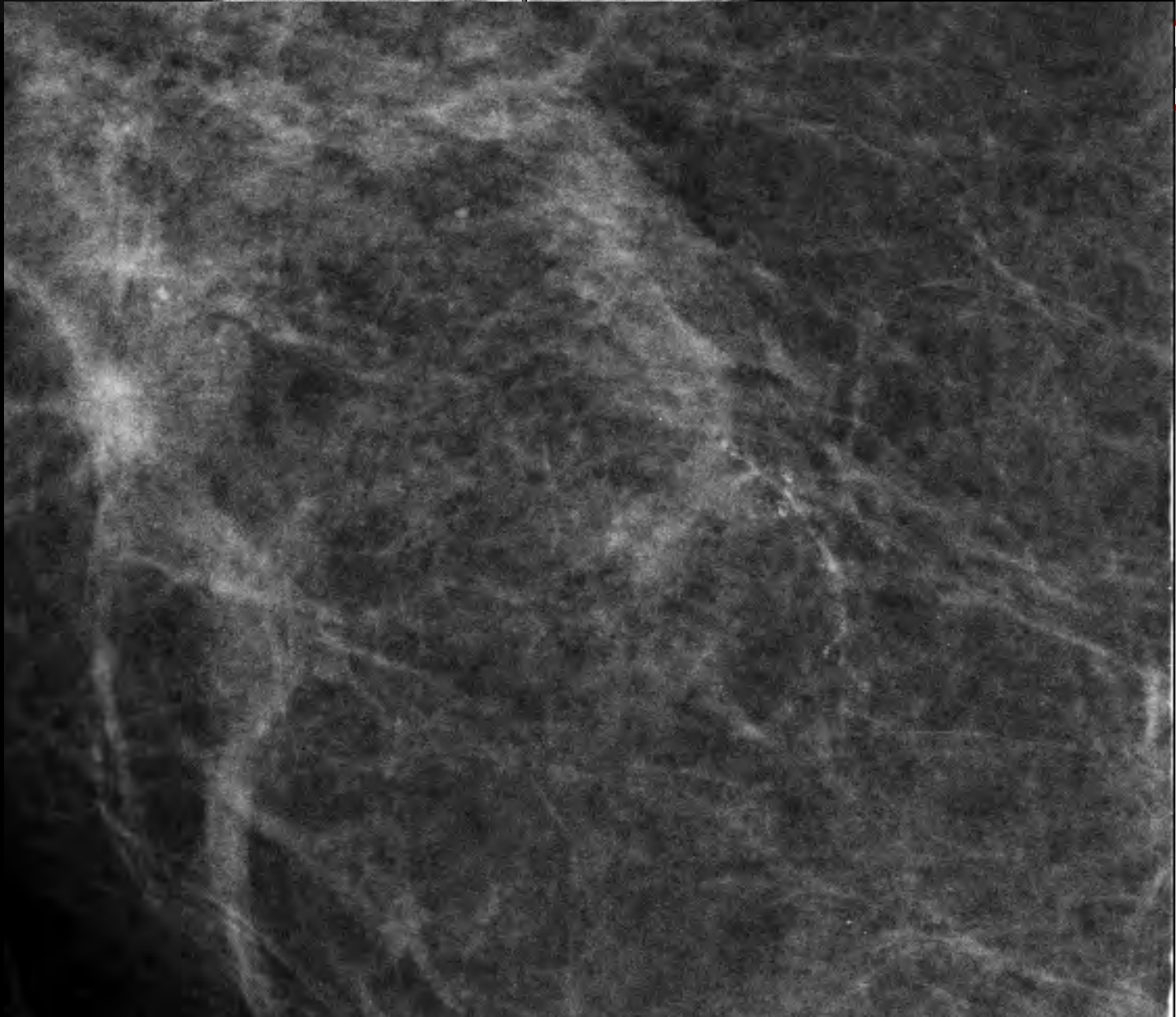
B 5a

DCIS G3

Fall 9



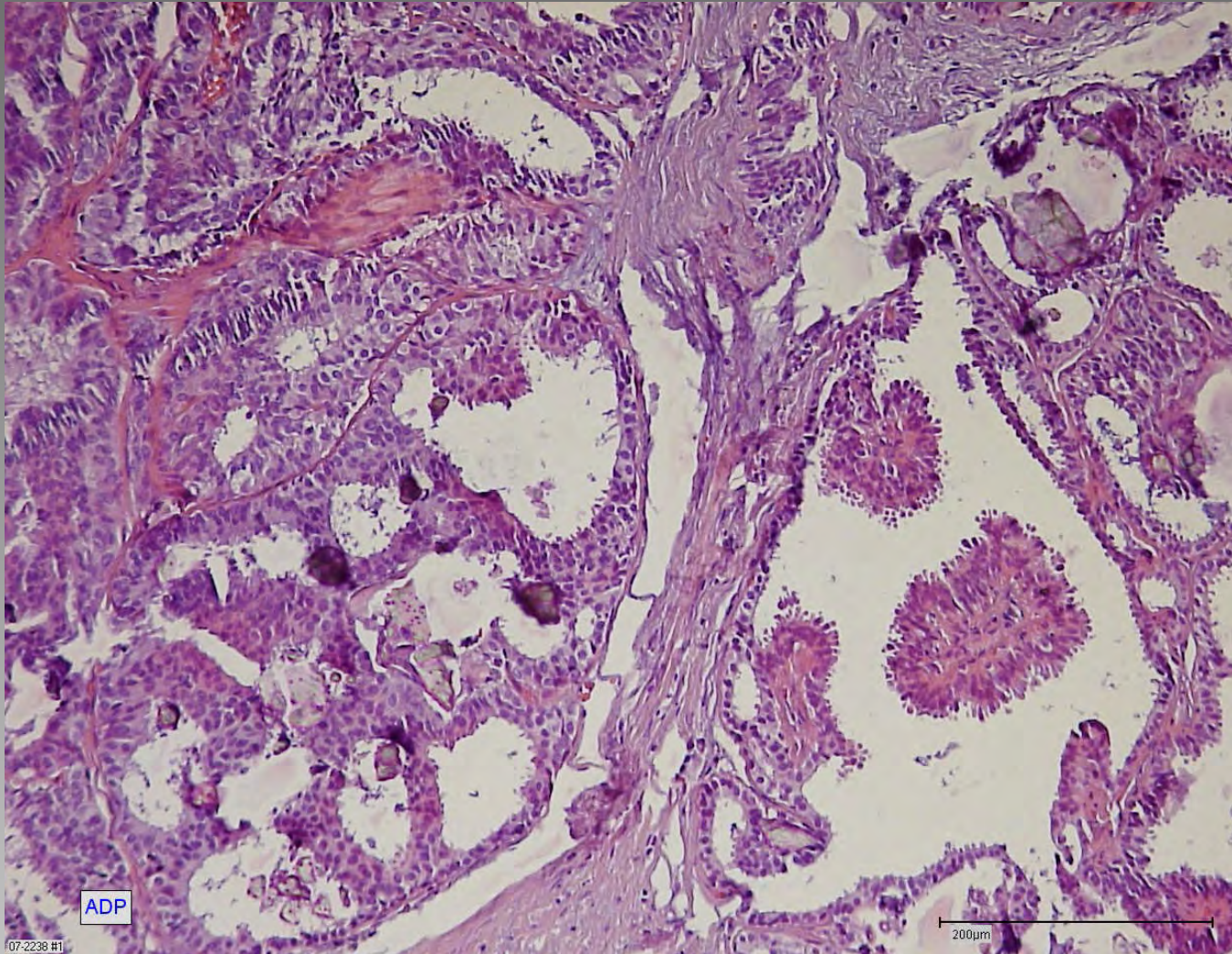
H 09-6936



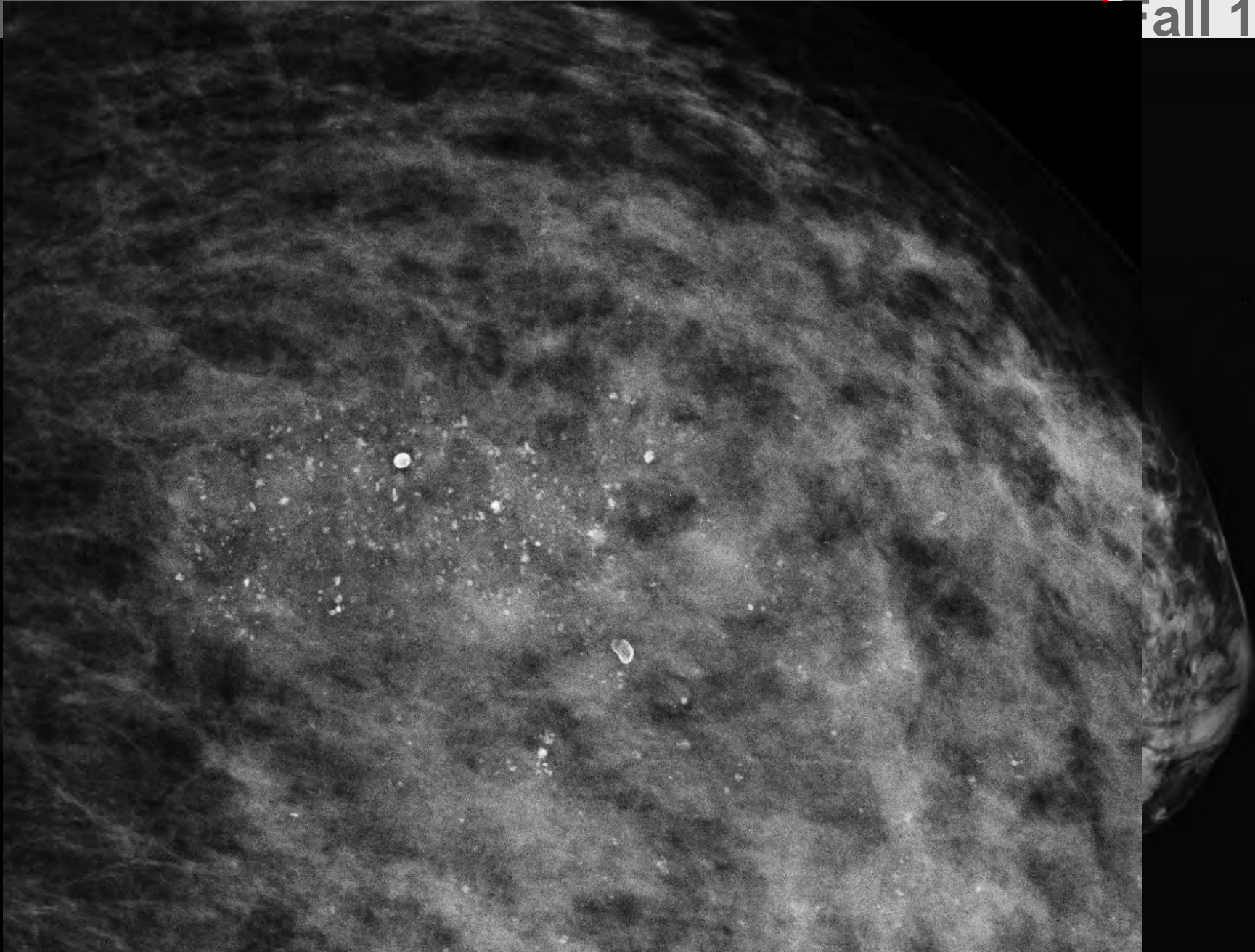


VB: B 3 atypische duktale Proliferation, ADP
OP-Präperat: gutartiger Befund

Fall 10

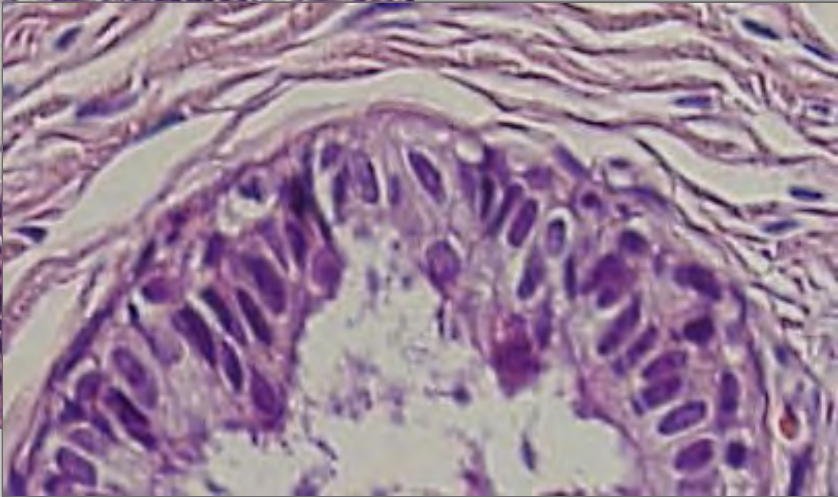
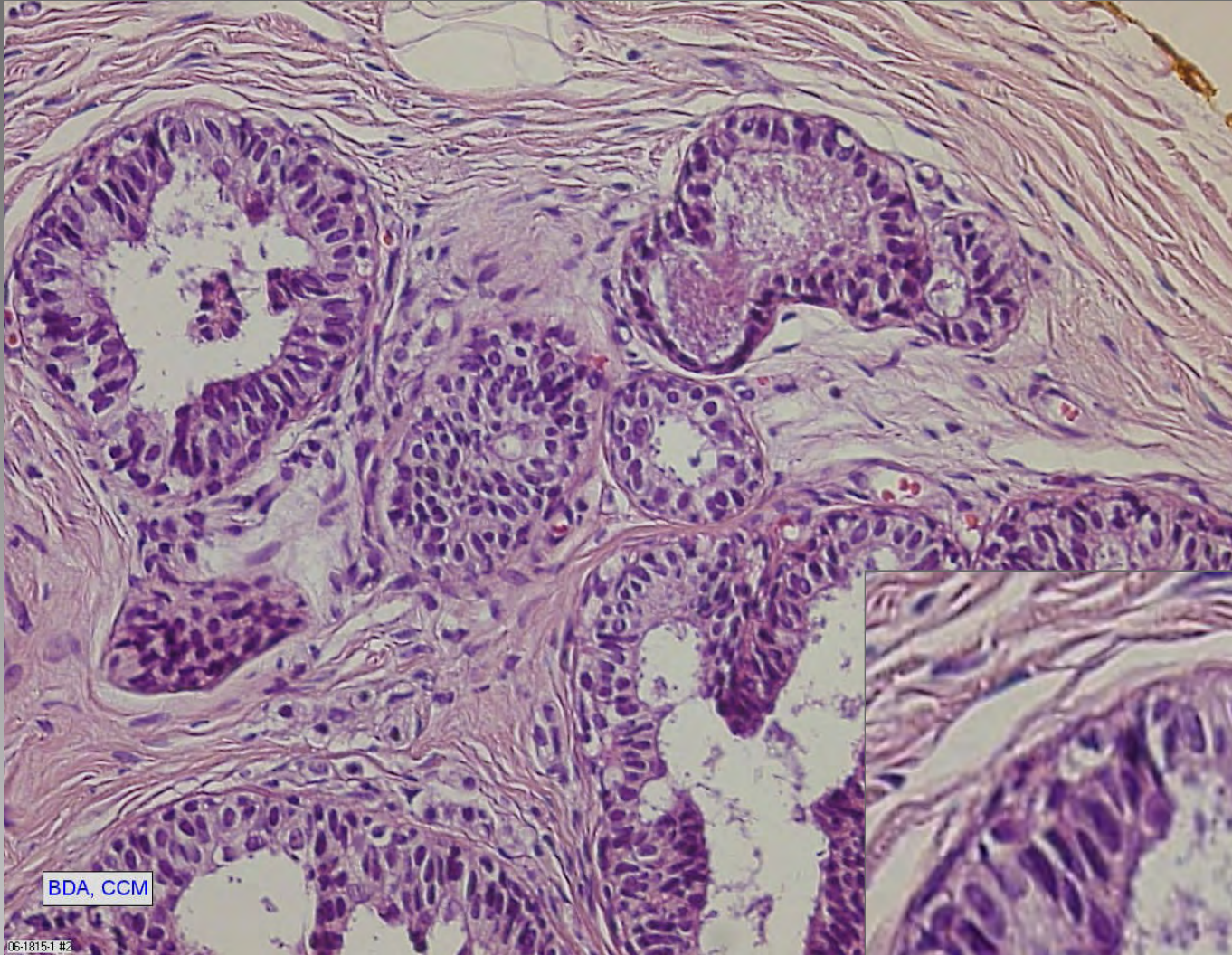


07-2238 #1

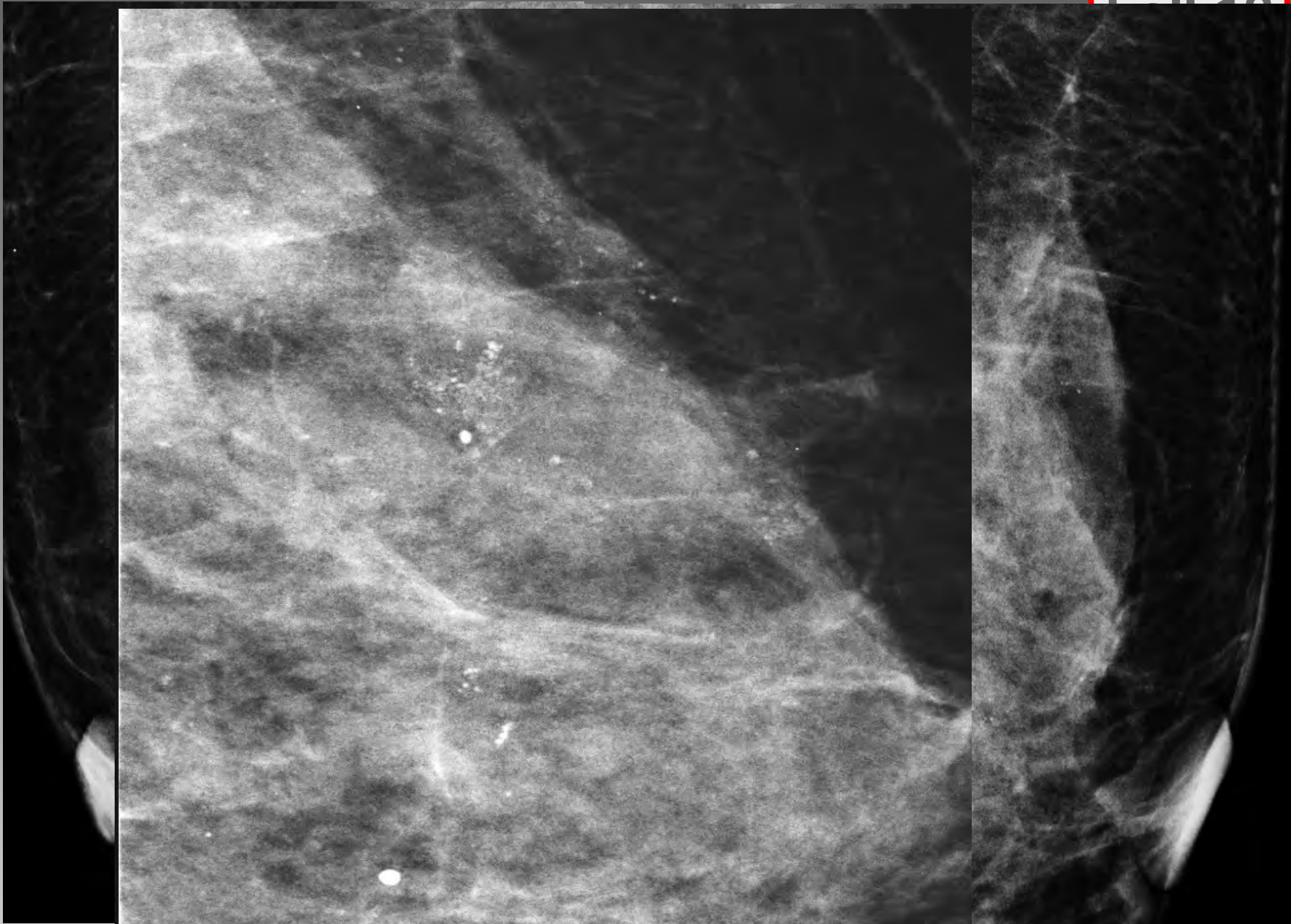




B 2 blunt duct adenose, Kolumnarzellmetaplasie, UDH



BDA, CCM



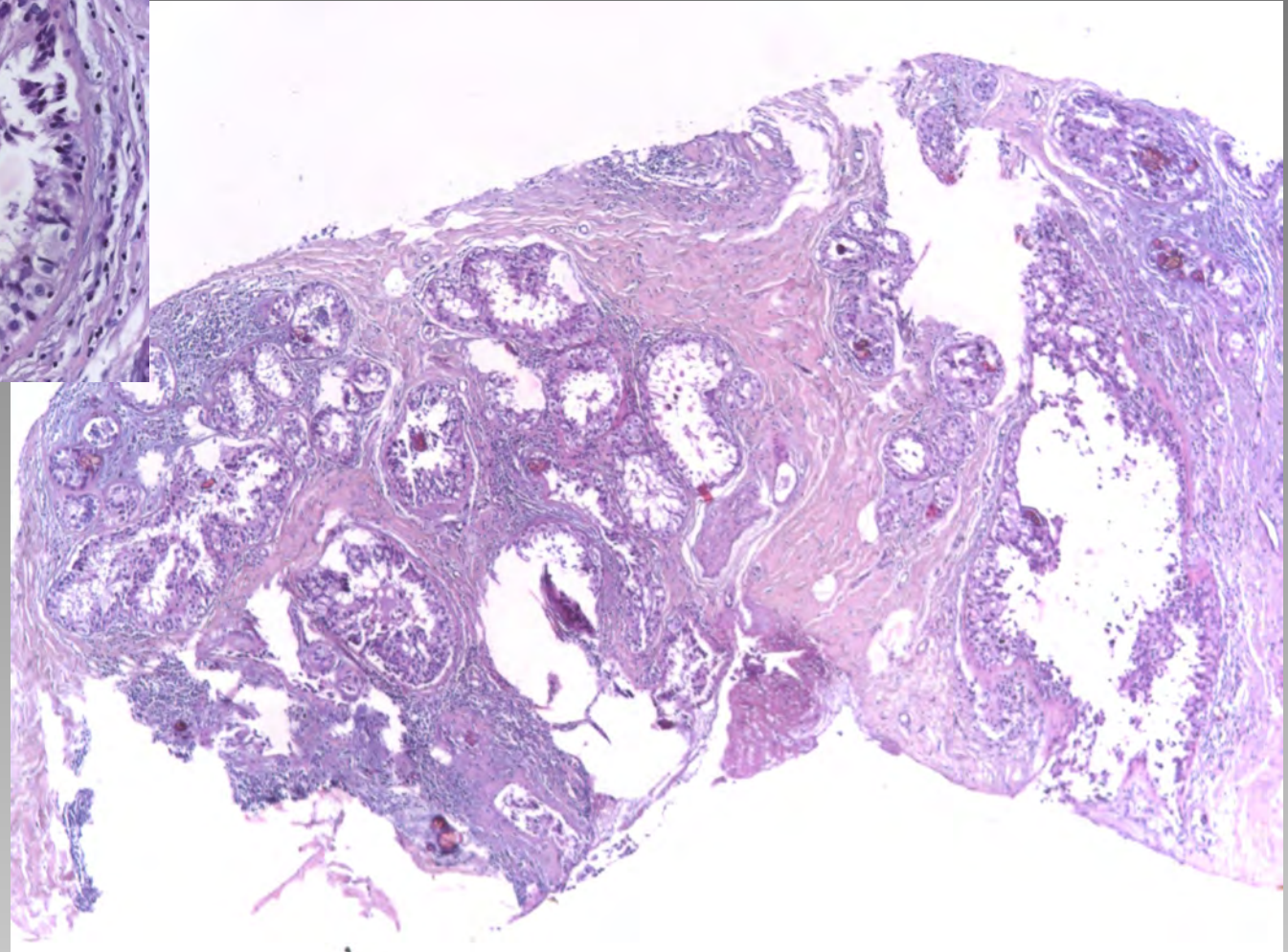
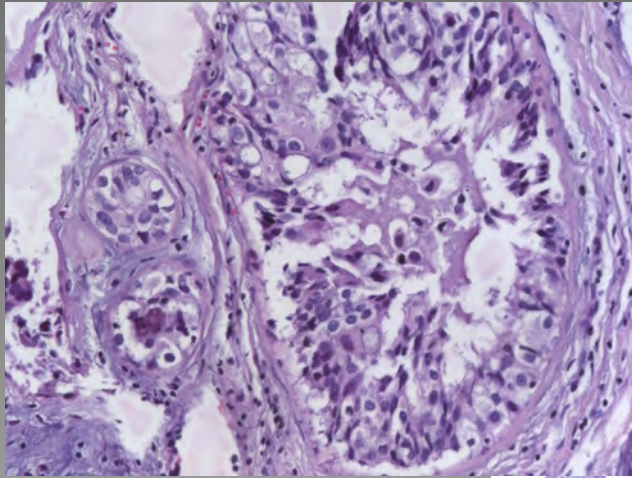
Fall 12



VB: B 5a DCIS G3

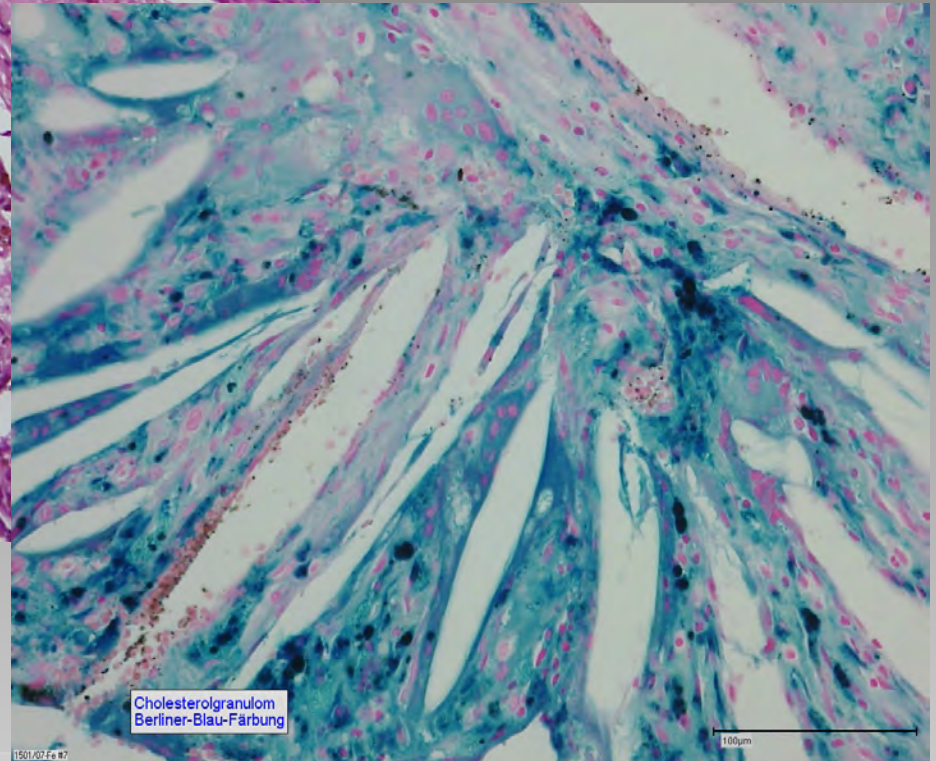
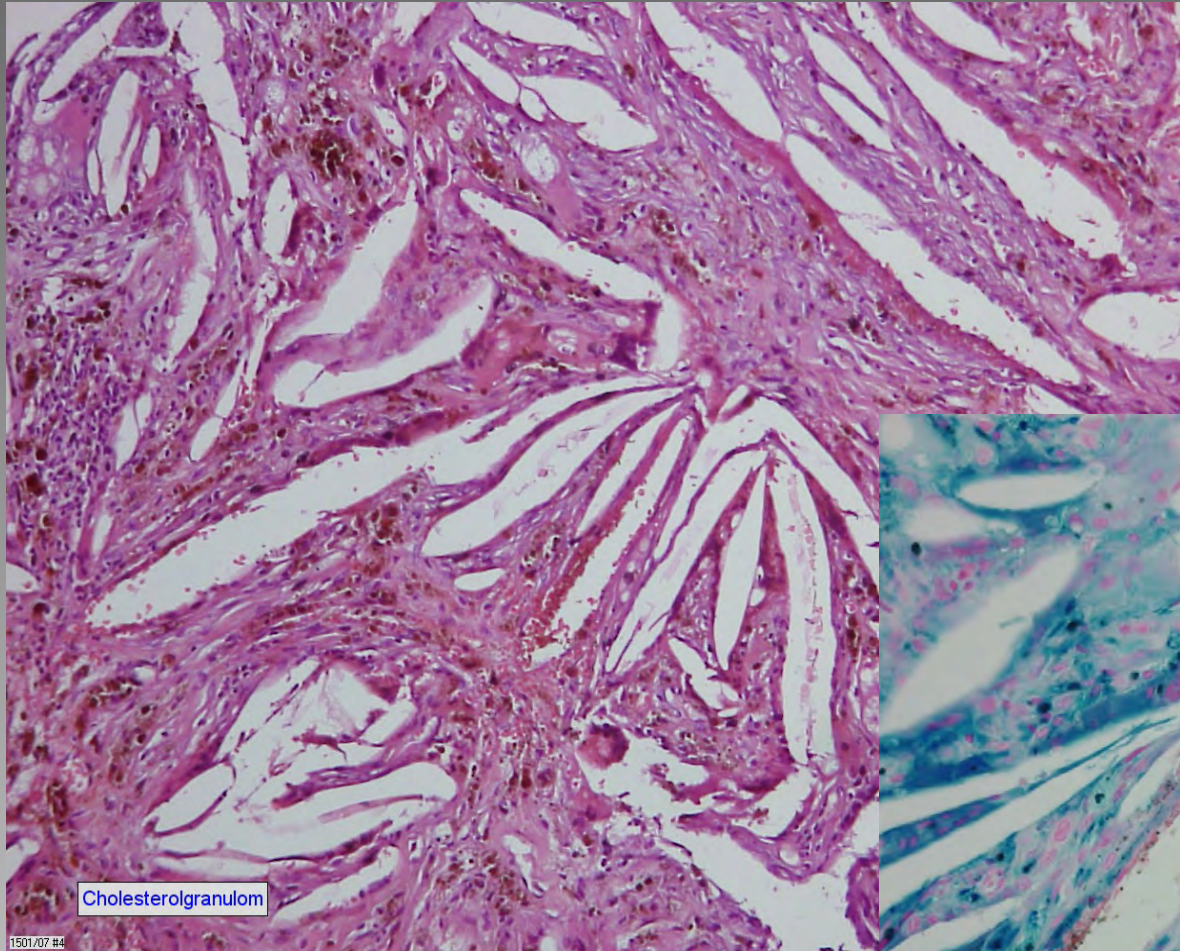
Op-Präperat: pTis 3 mm G3

Fall 12

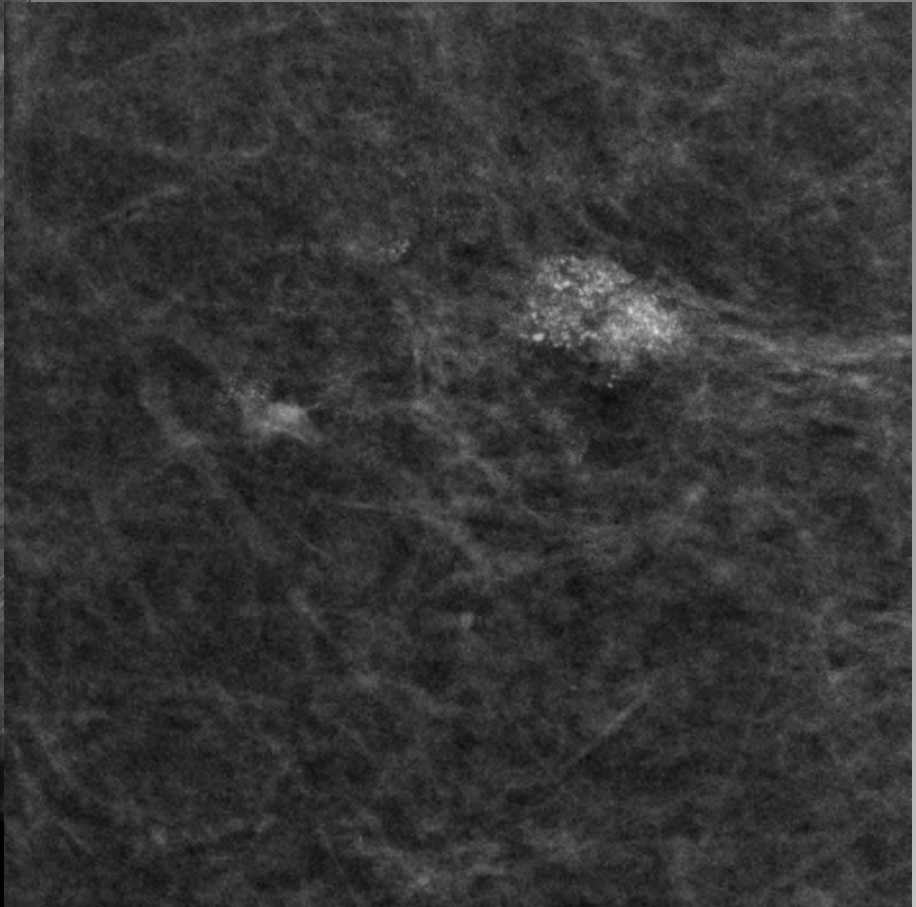
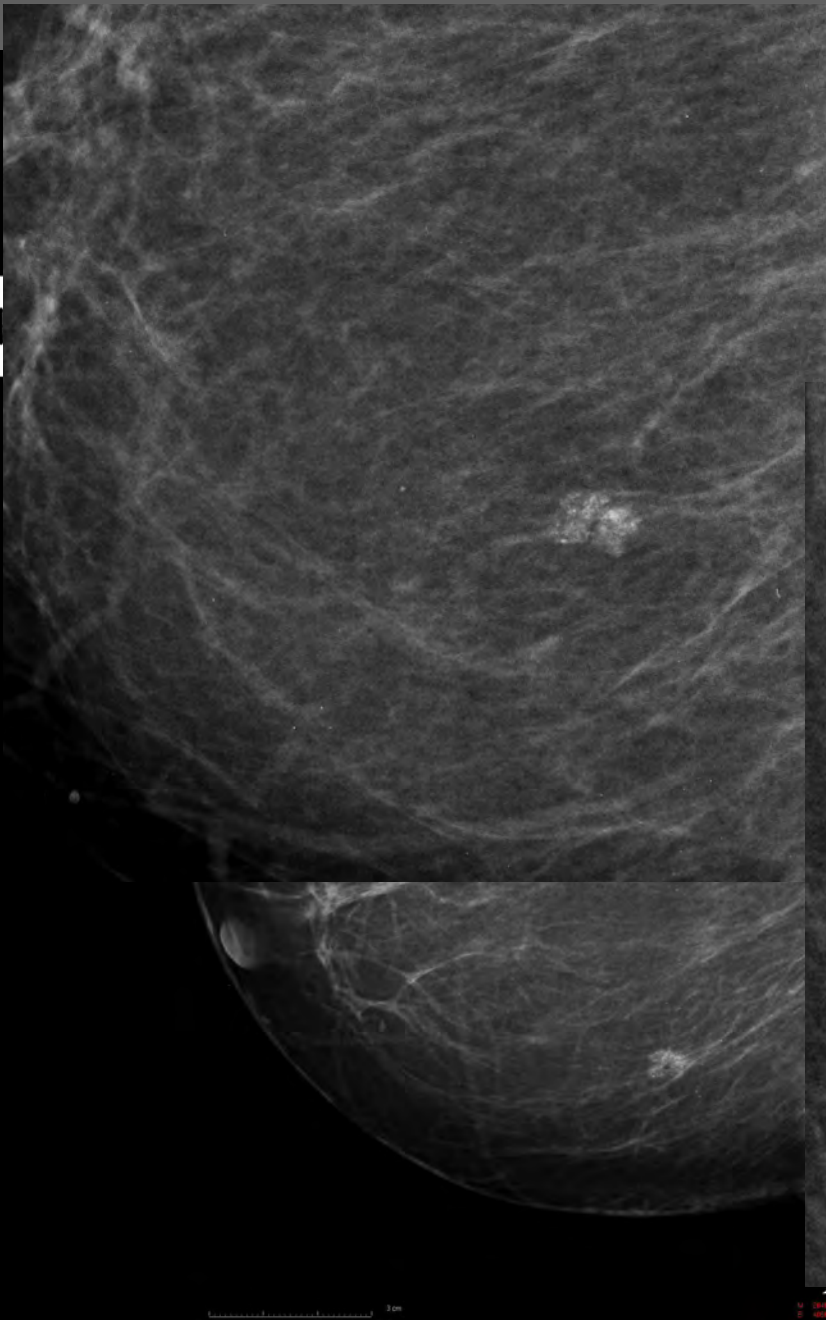


H 07-45754





Fall14

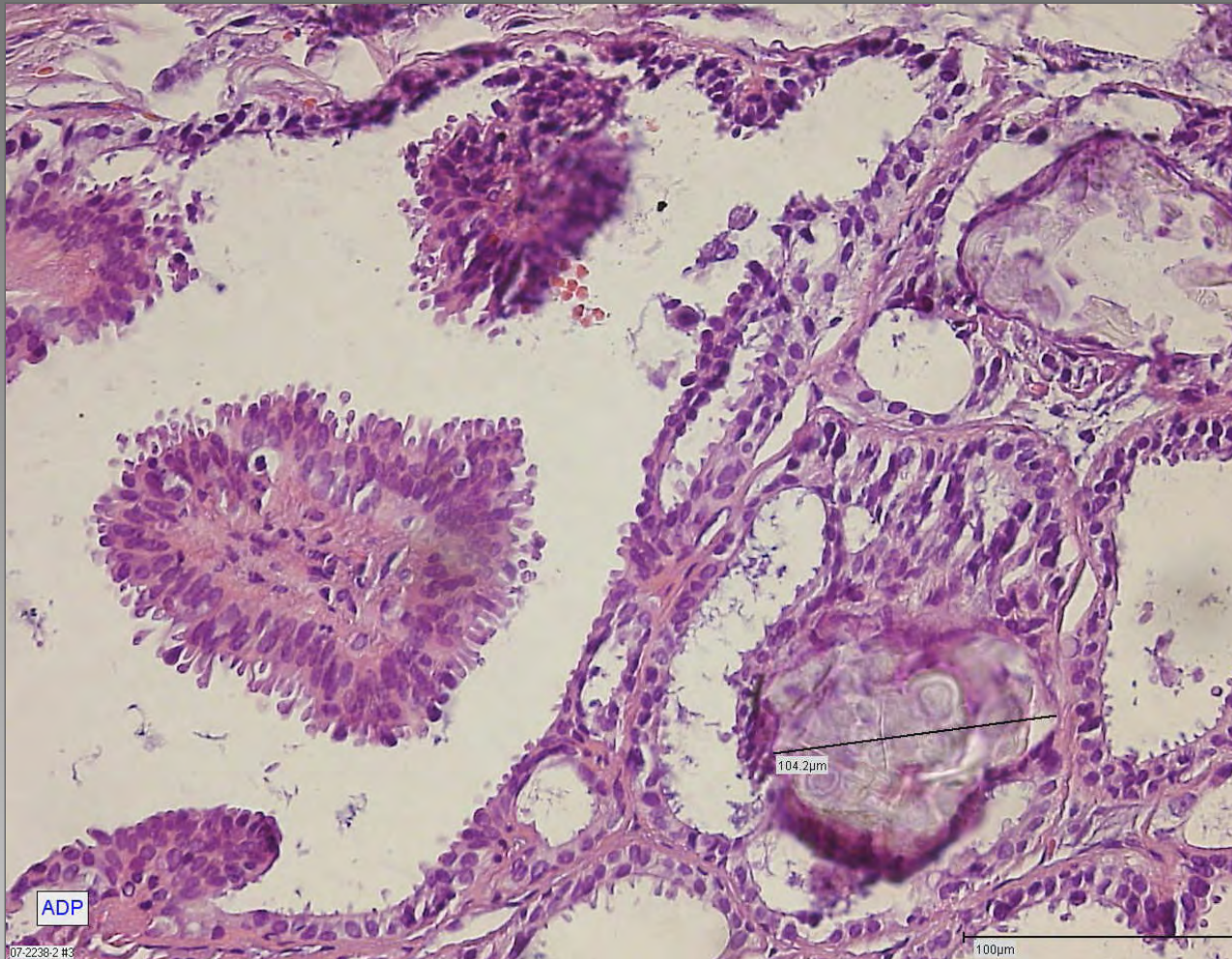




VB: B 3 atypische duktale Proliferation (ADP)

OP-Präperat: gutartiger Befund

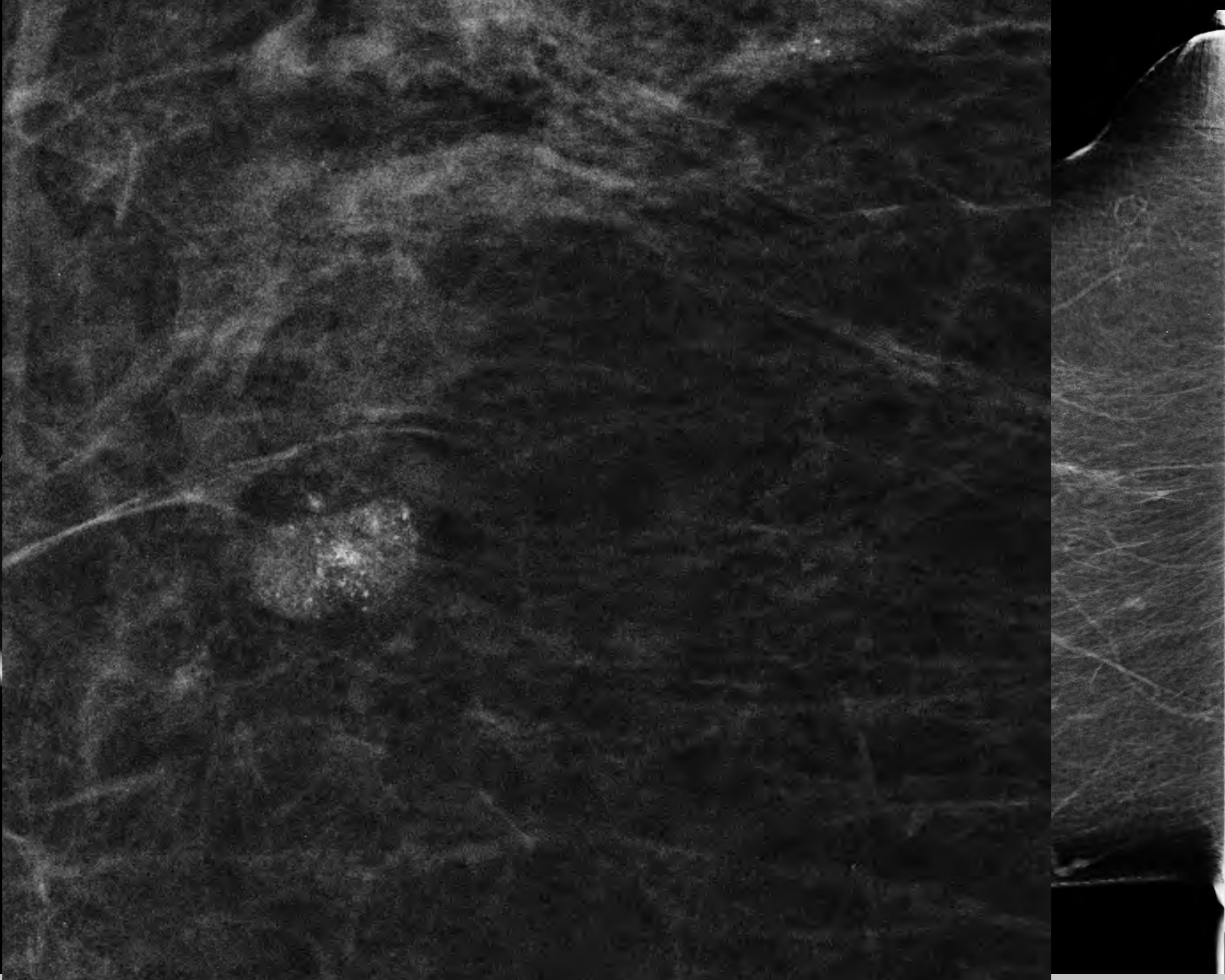
Fall14



H 07 2238

R-mlo

II15

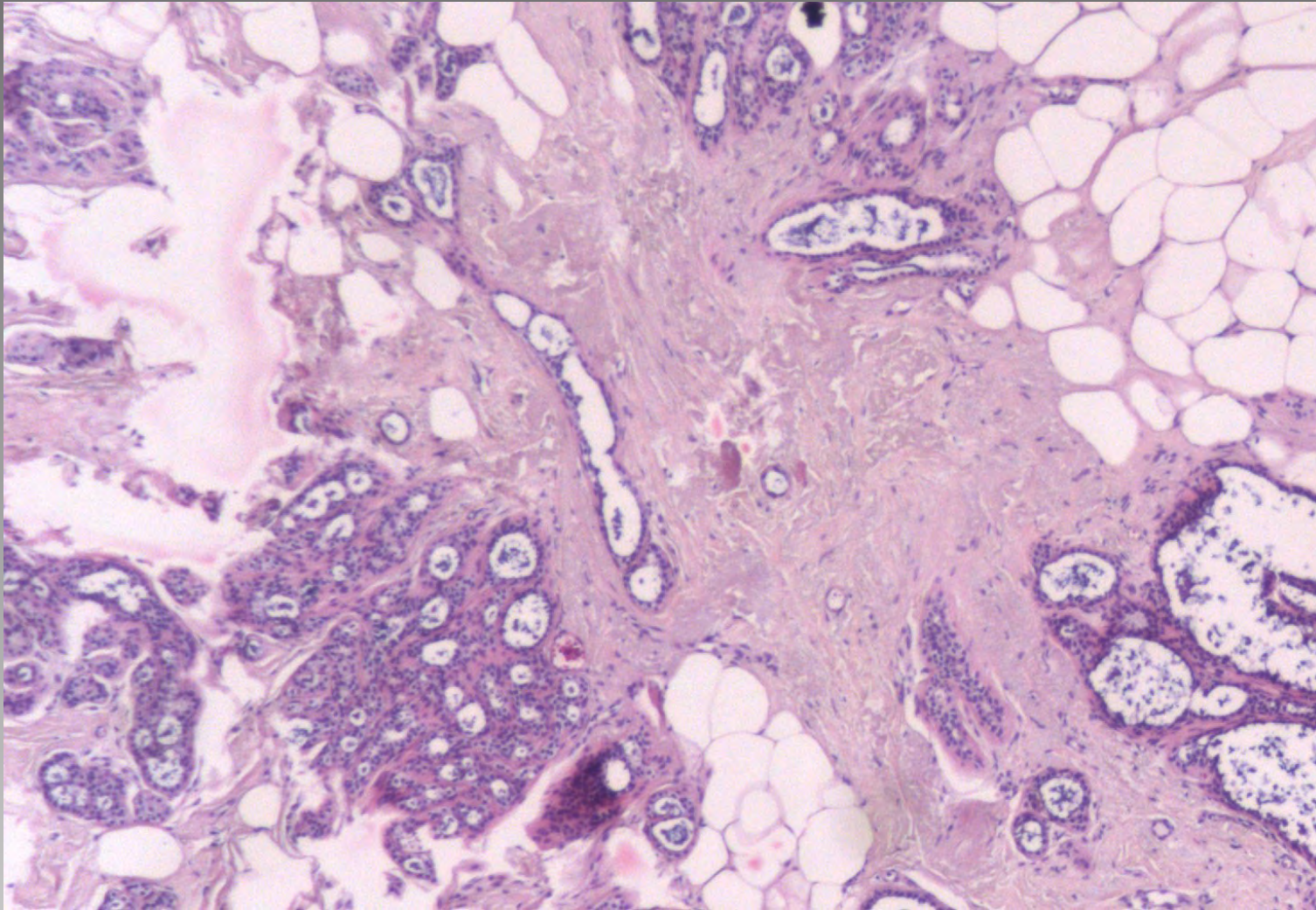


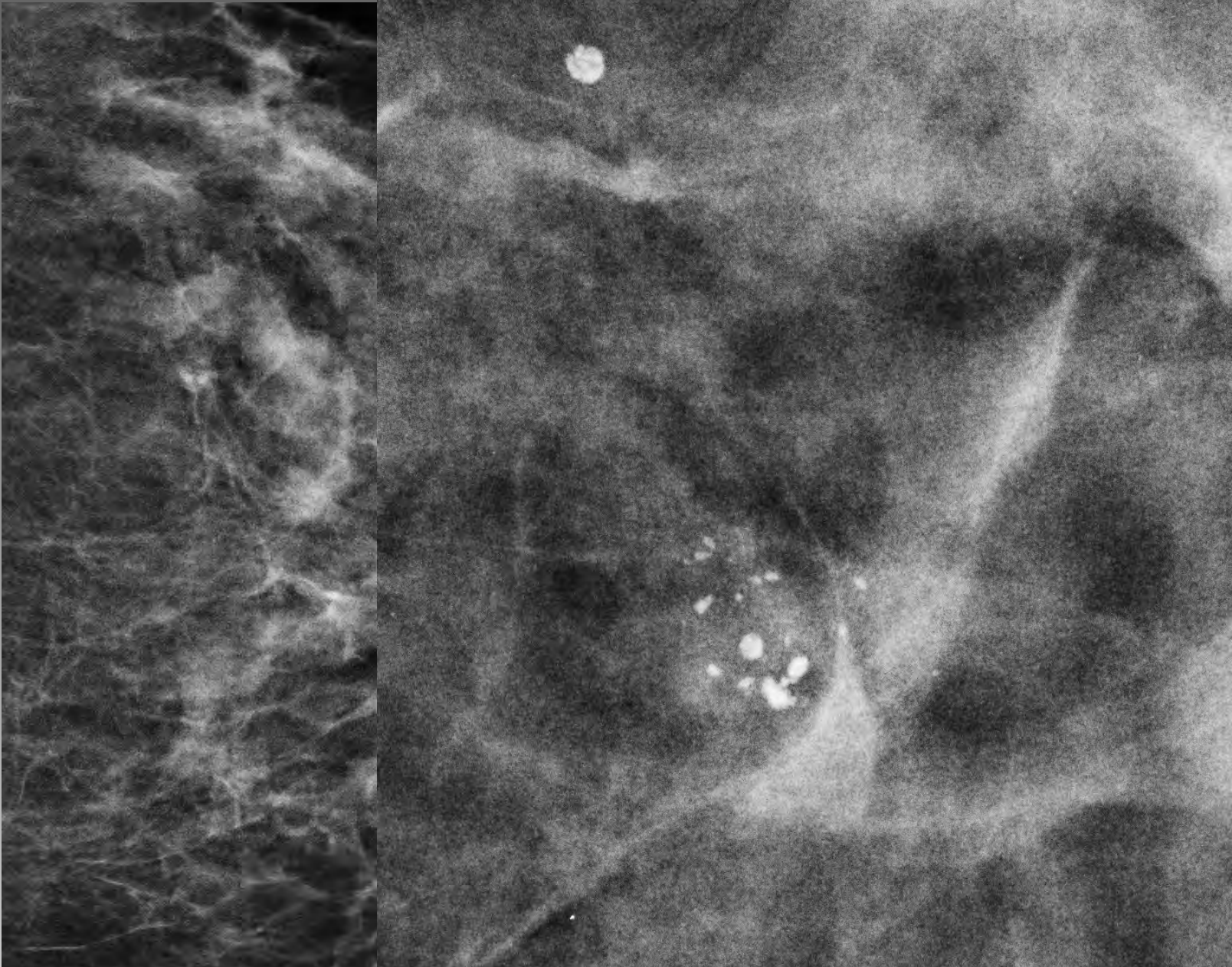
Fall15



VB: B3; komplexe sklerosierende Läsion, radiäre Narbe
Op-Präperat: pTis G2 50 mm

Fall15

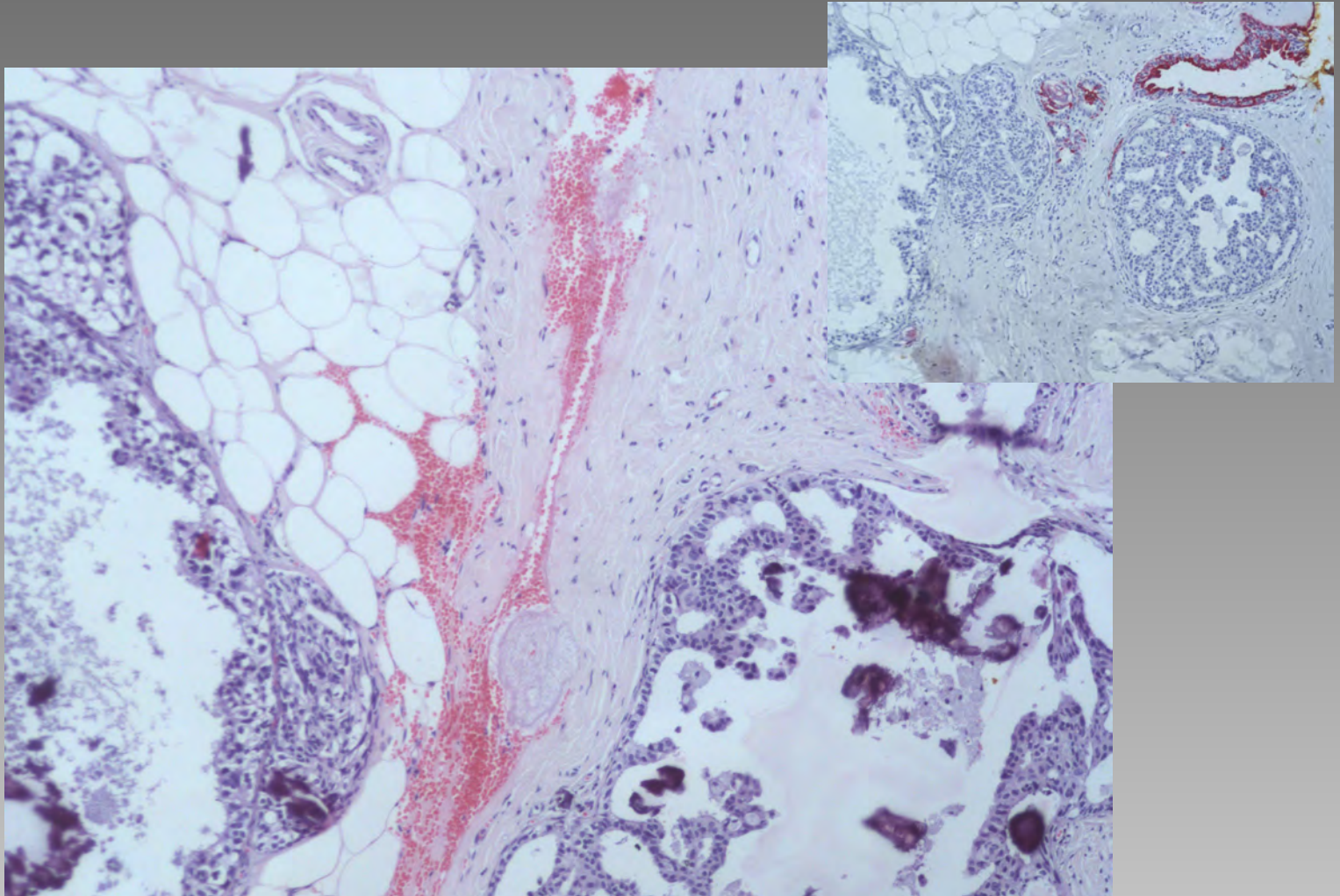




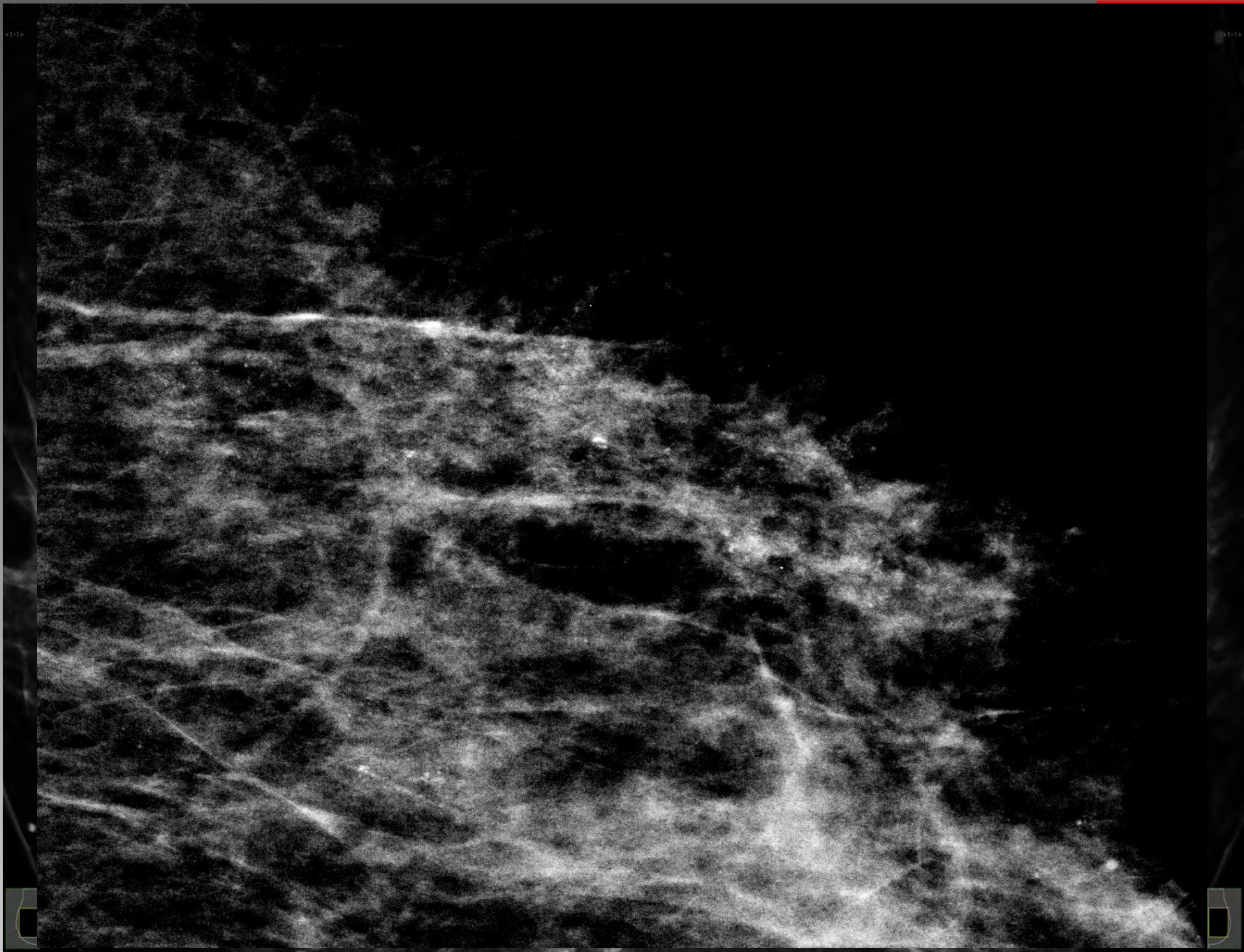


VB: B5a; DCIS G2
Op-Präperat: pTis 5 mm G2

Fall16



H 08-26067





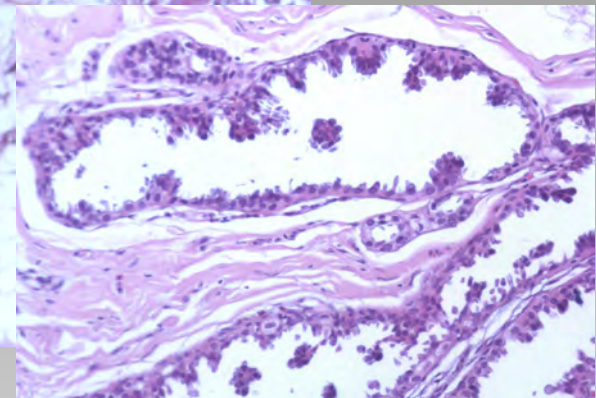
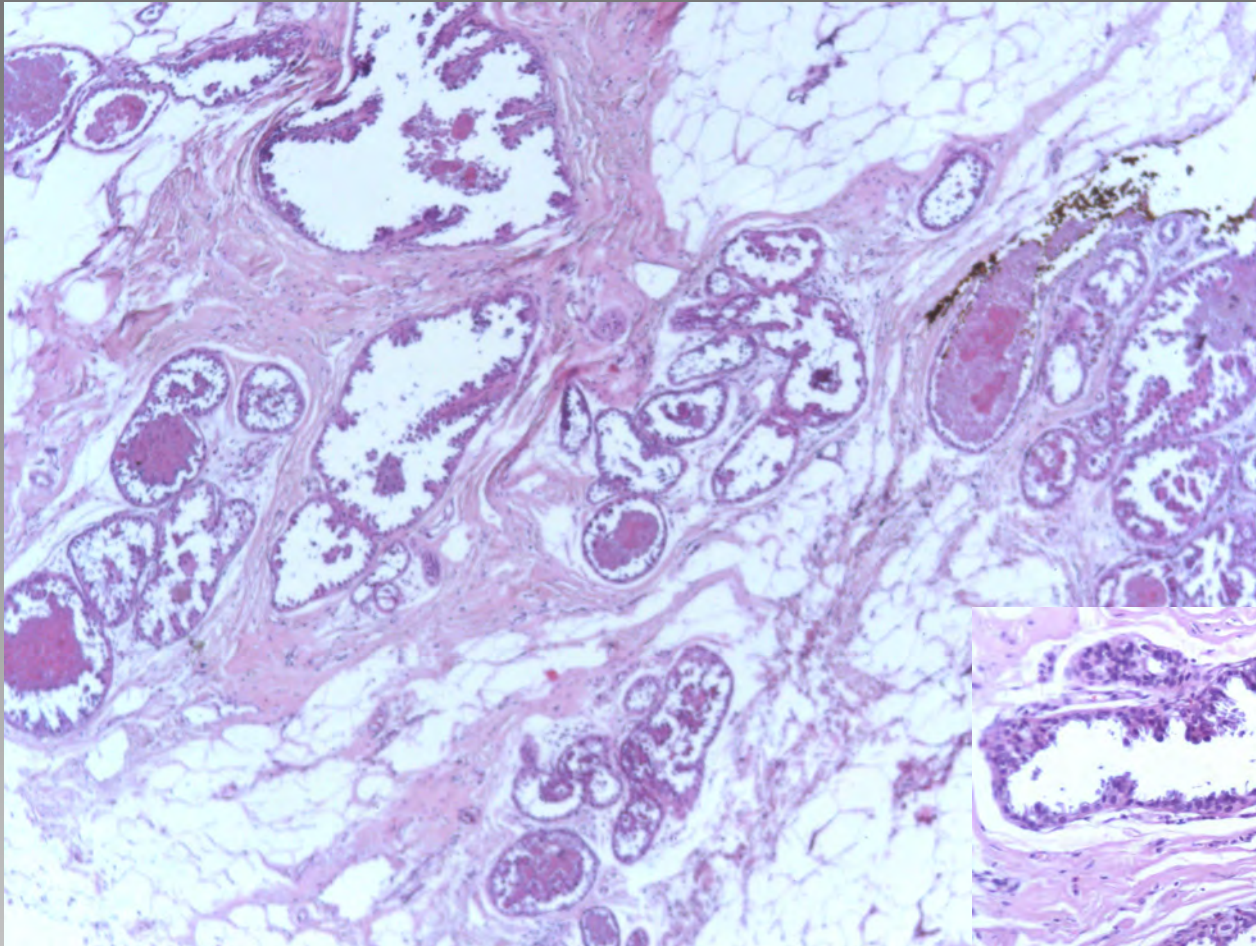
VB

B5a; DCIS G3

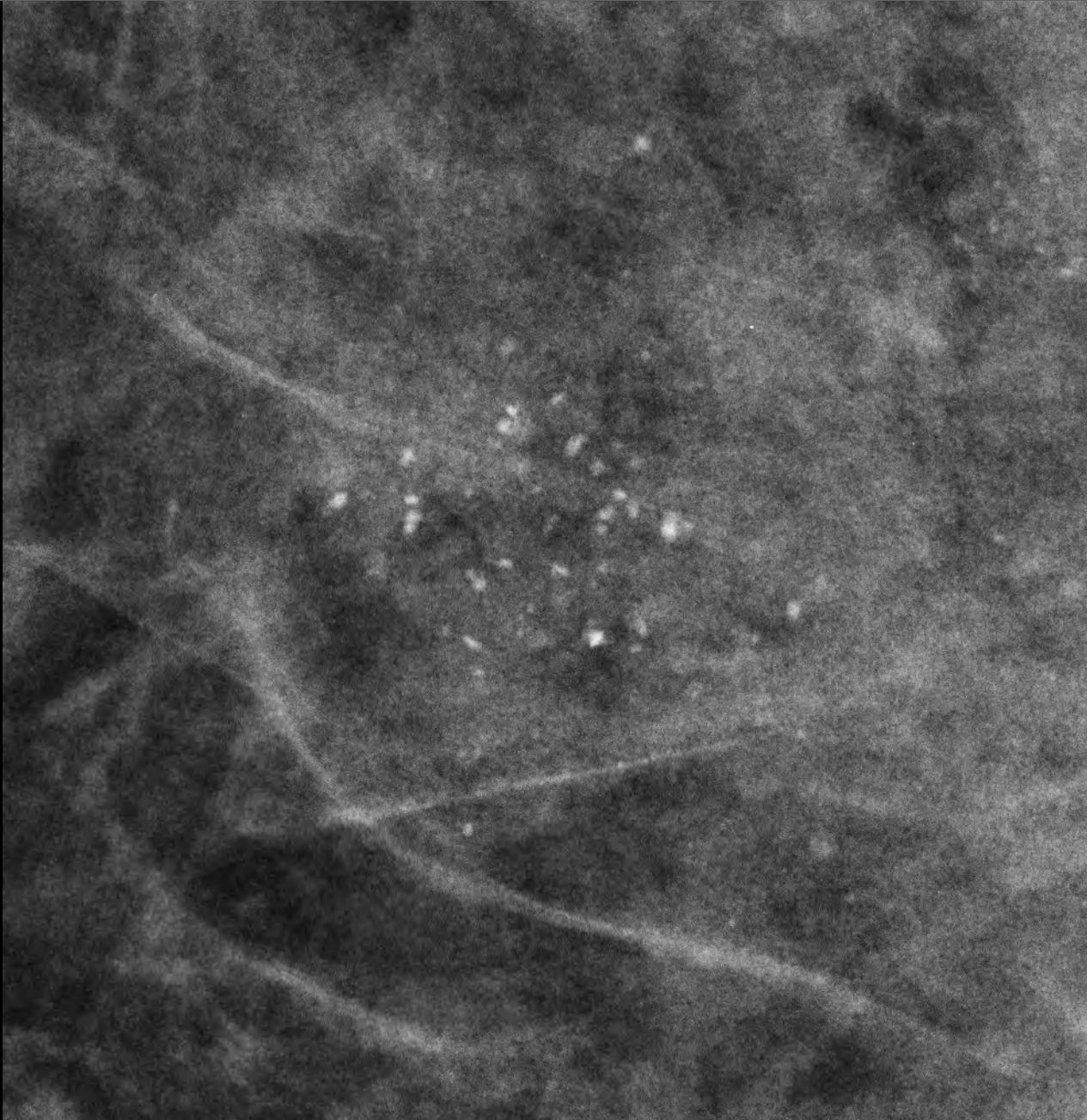
Op-Präperat:

pTis G3 80 mm pN0 (0/2 sn)

Fall17



lo



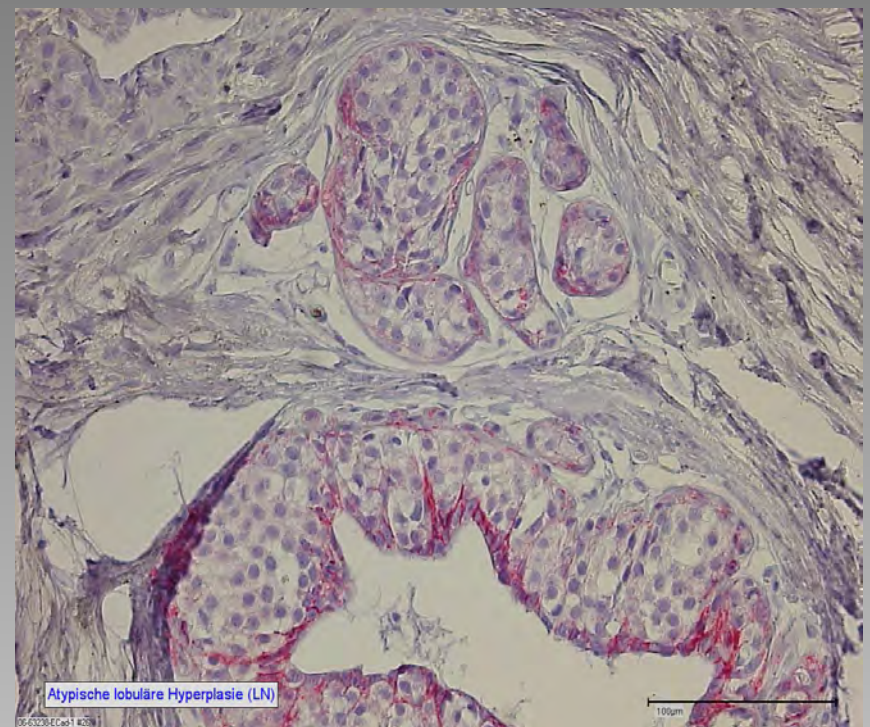
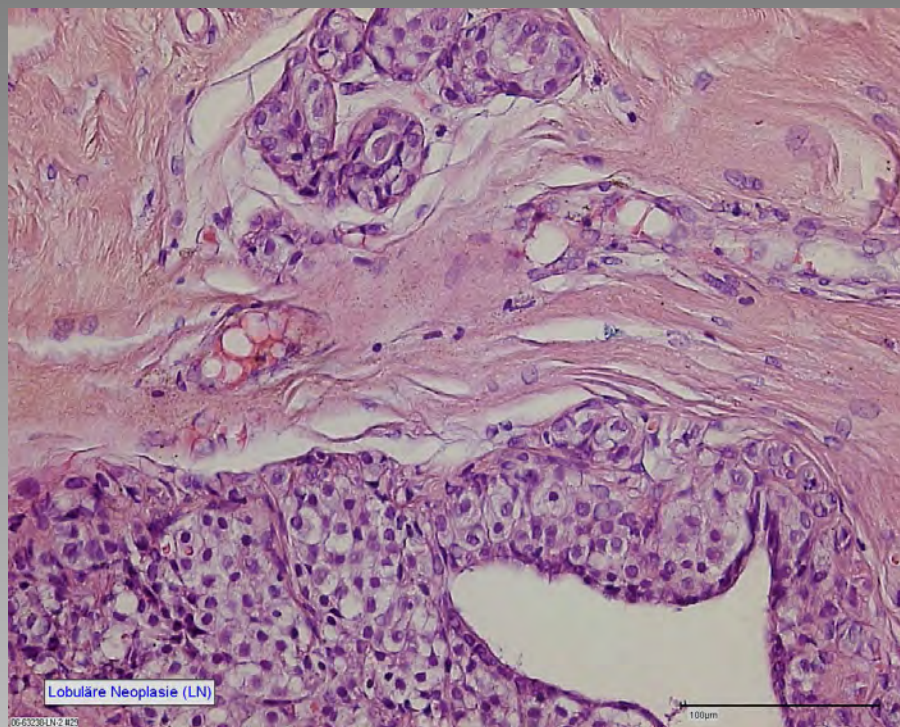
Fall18



B3

lobuläre Neoplasie (LN), FEA

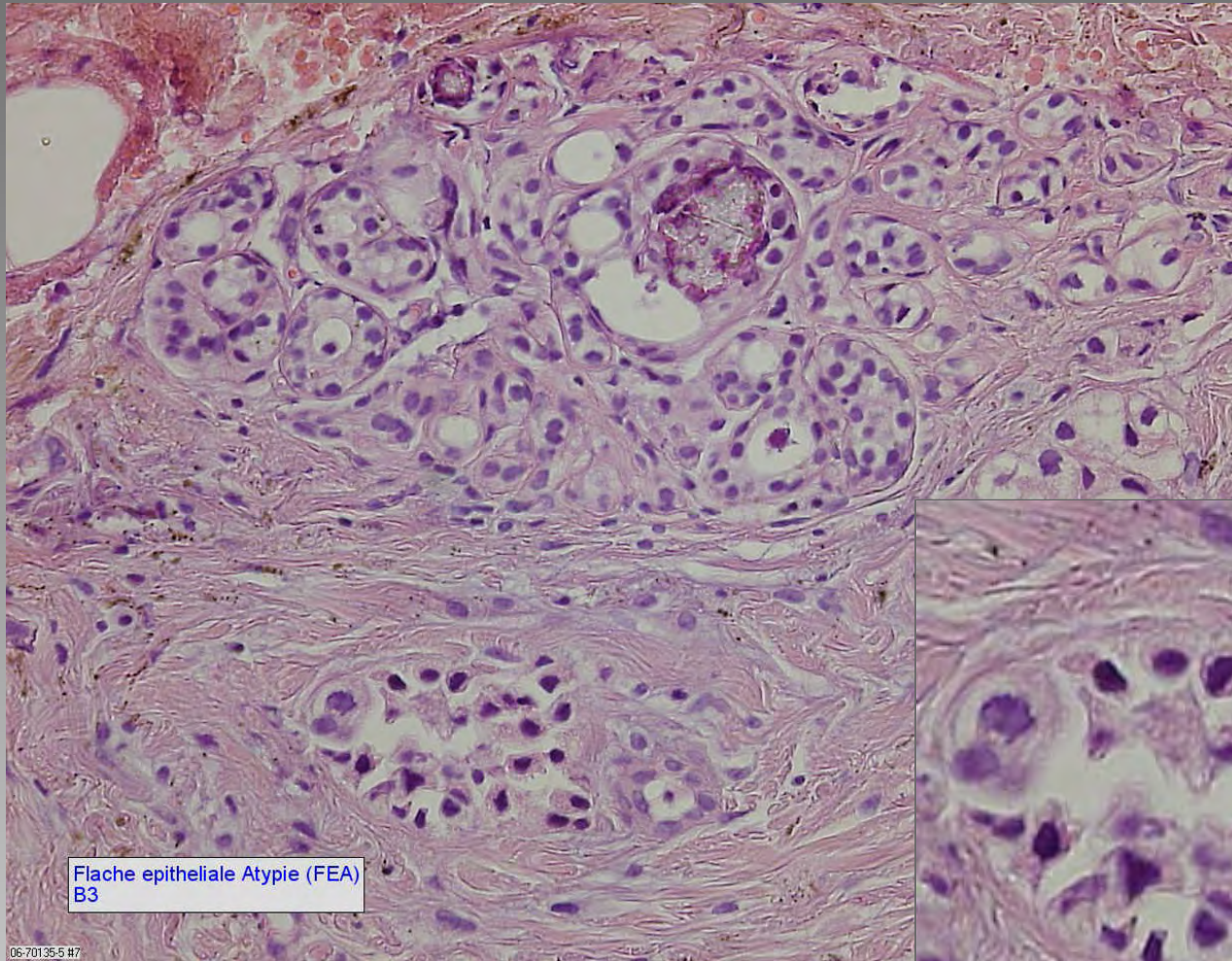
Fall18



B3

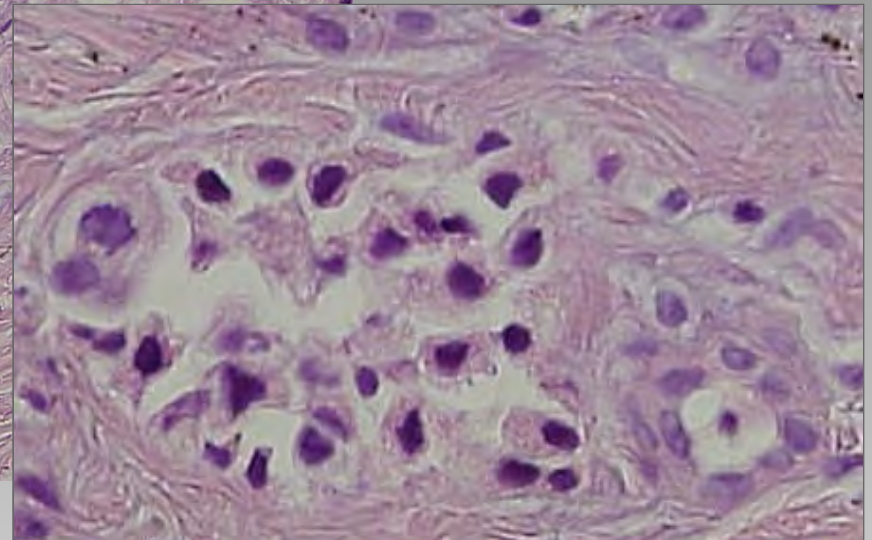
lobuläre Neoplasie (LN), FEA

Fall18

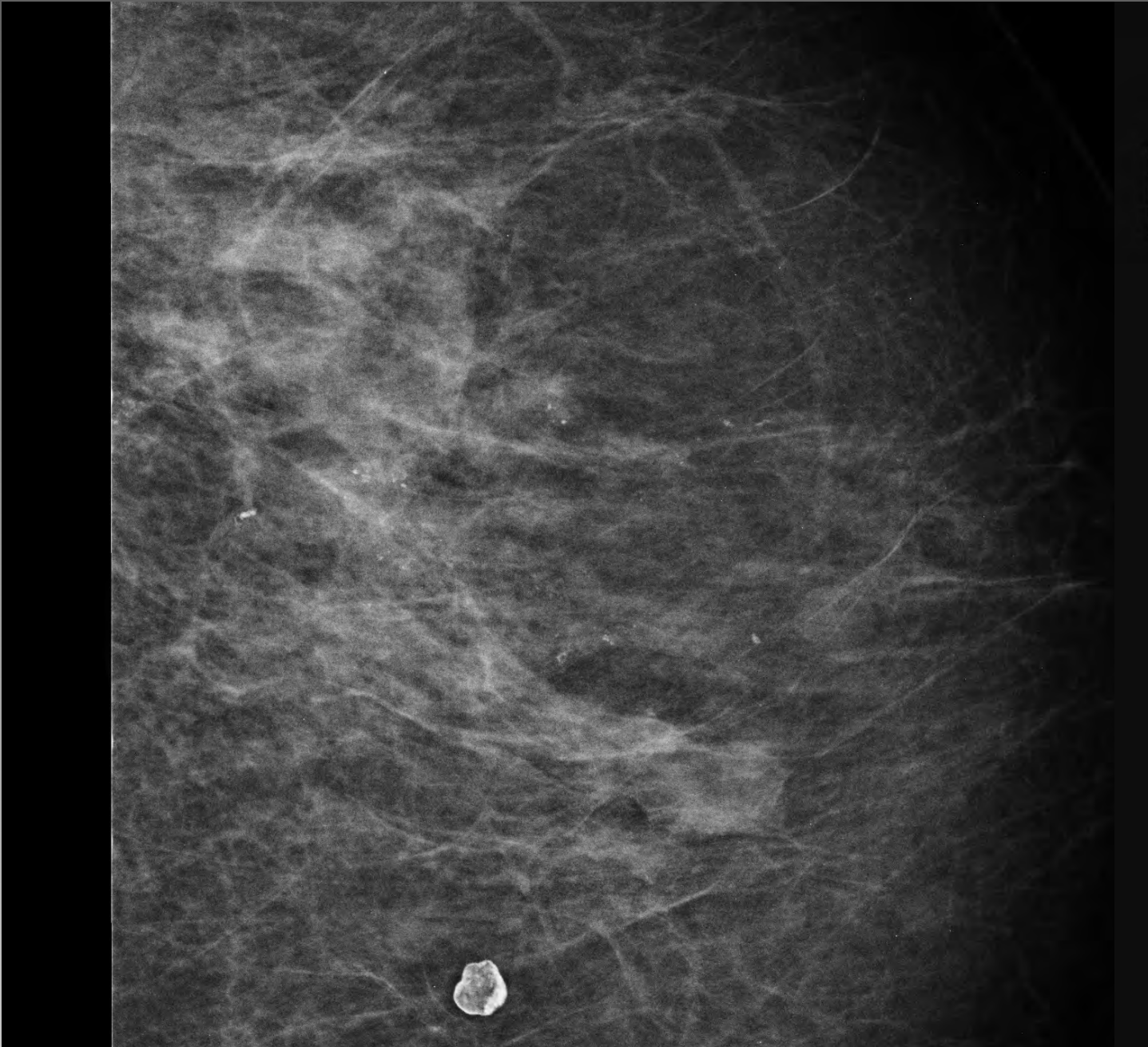


Flache epitheliale Atypie (FEA)
B3

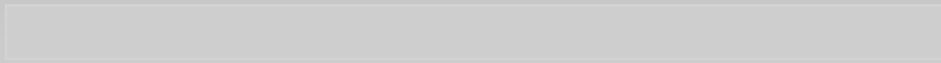
05-70135-5 #7



Fall19

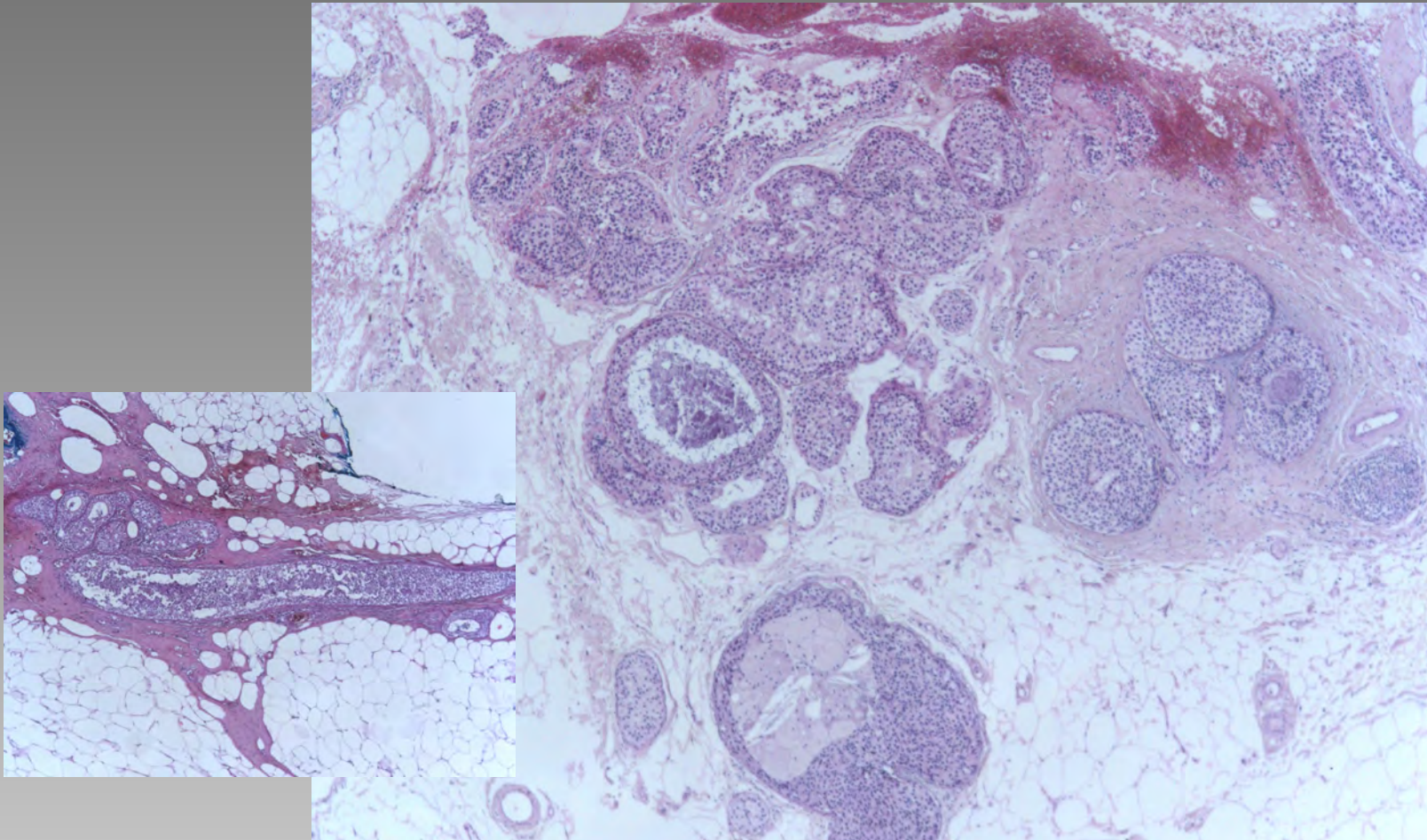


Fall19

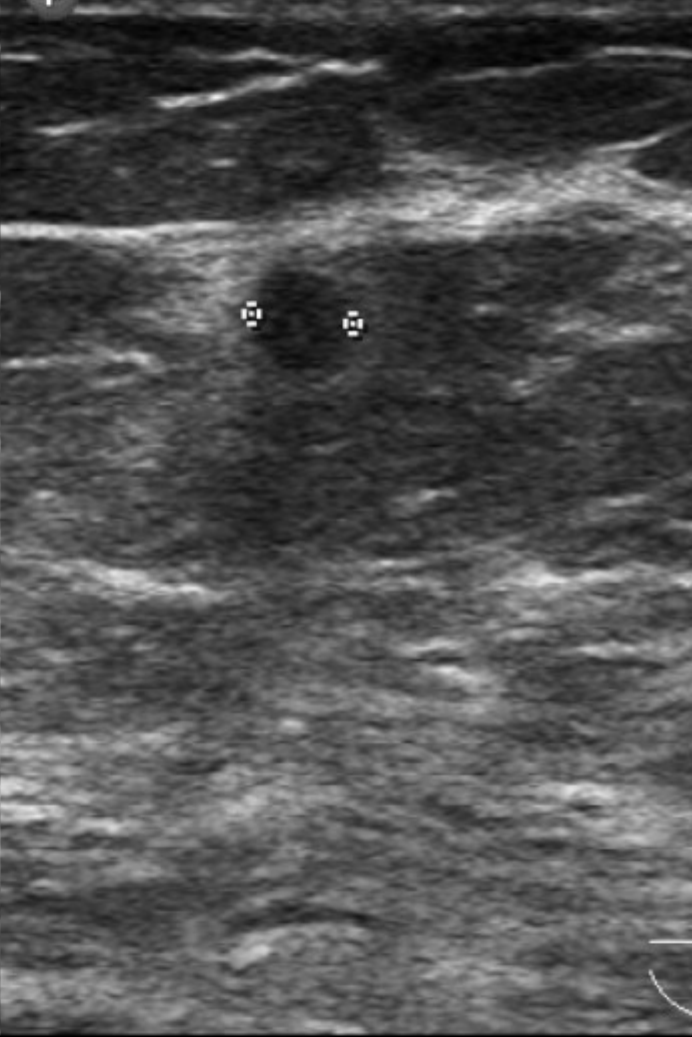


VB: B5a; DCIS G3
Op-Präperat: pTis G3 74 mm pN0 (0/2 sn)

Fall19



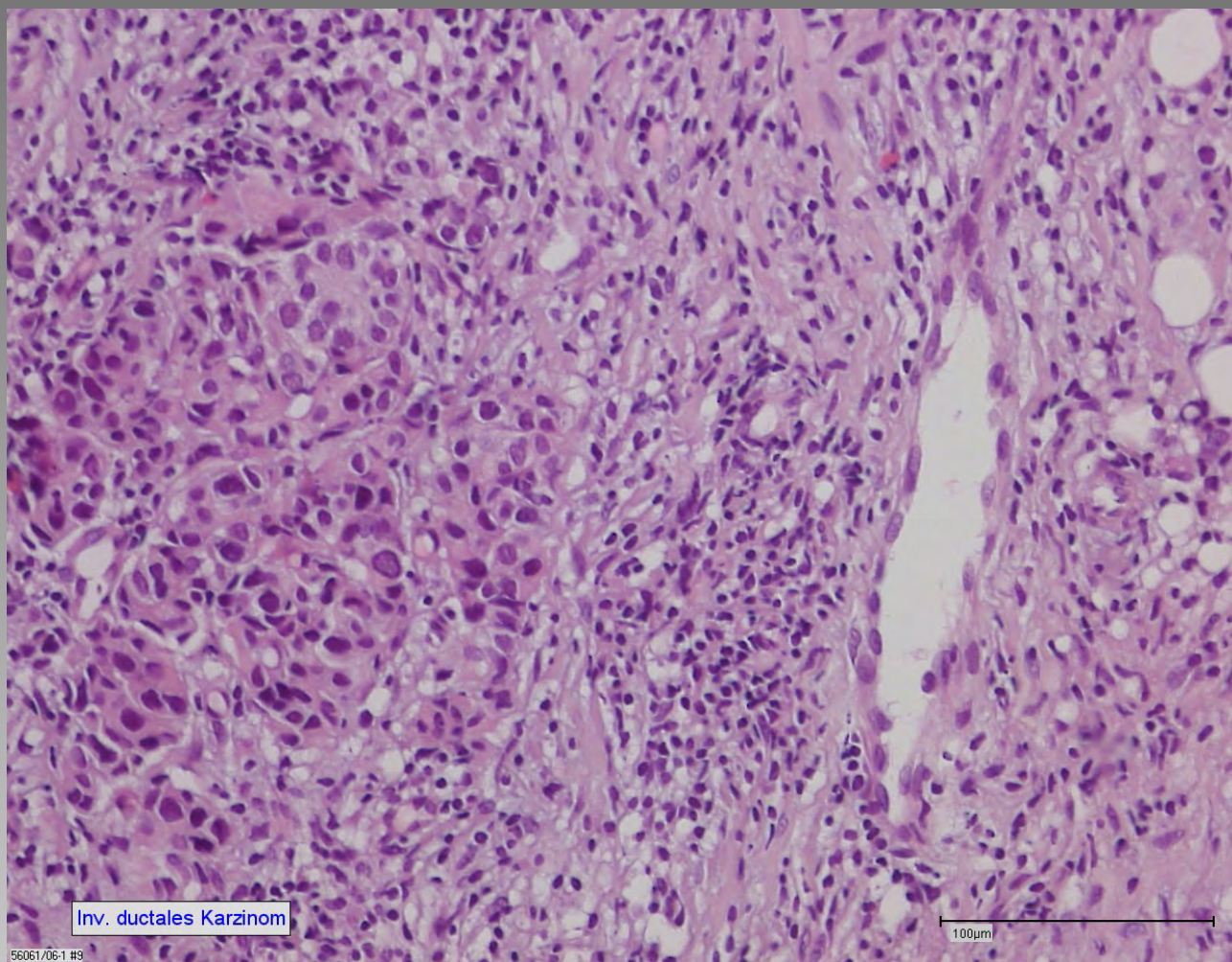
H 08-39016



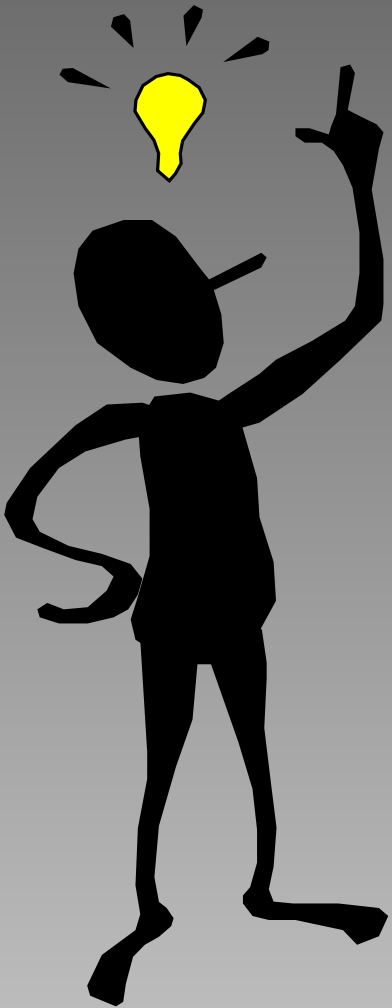


HSS: B5b; invasiv duktales Karzinom G2
Op-Präperat: pT1b (6mm) G2 pN0 (0/2 sn)

Fall20



Alles Klar ?



**Institut für
PATHOLOGIE**

**MAMMOGRAPHIE
SCREENING
HANNOVER**