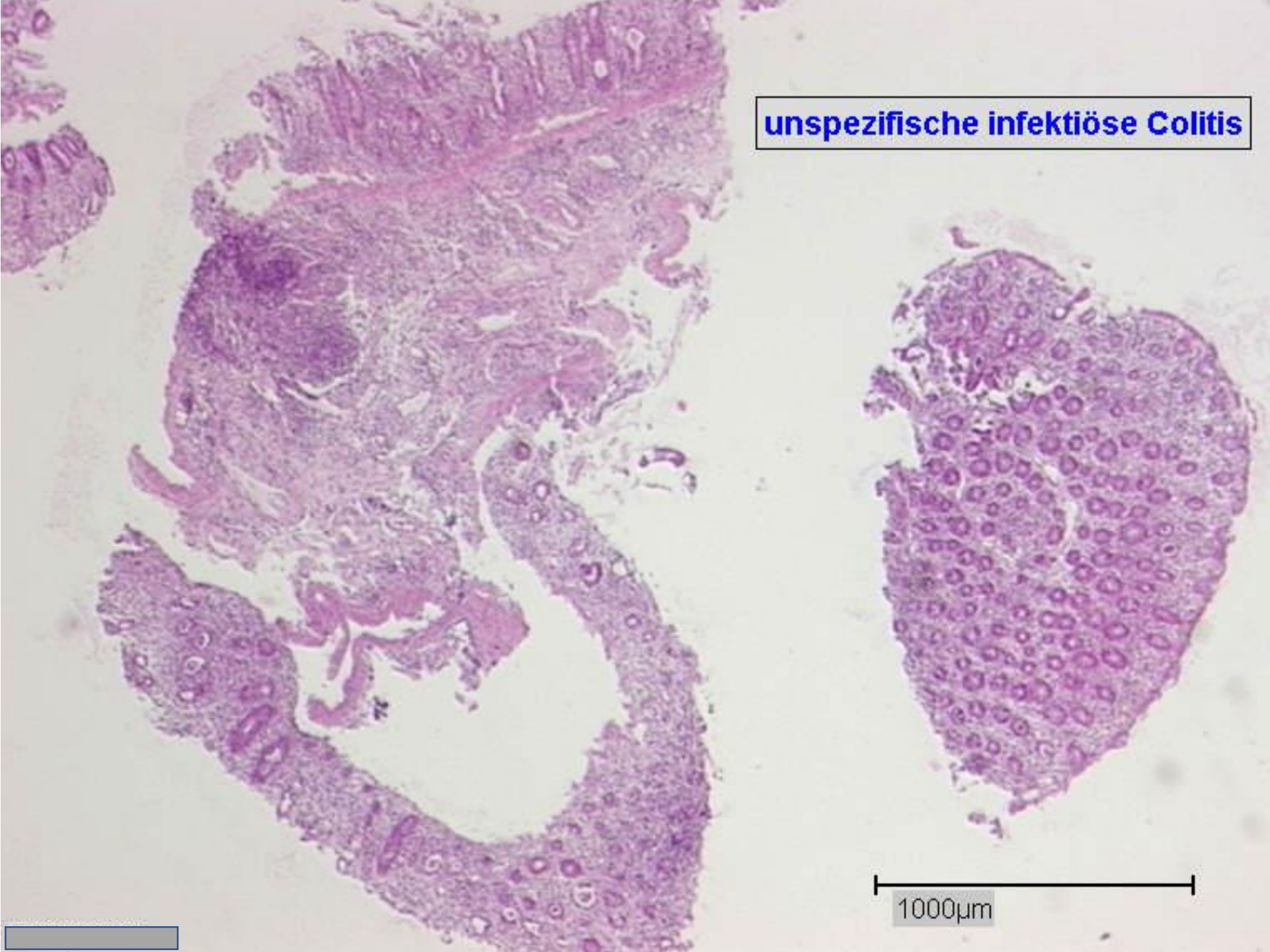


Infektiöse Colitiden

anhand von

- Yersinieninfektion
- Tuberkulose
- Schistosomiasis
- Amöbiasis
- Coccidiosporidiose
- Coccidiomykose

unspezifische infektiöse Colitis



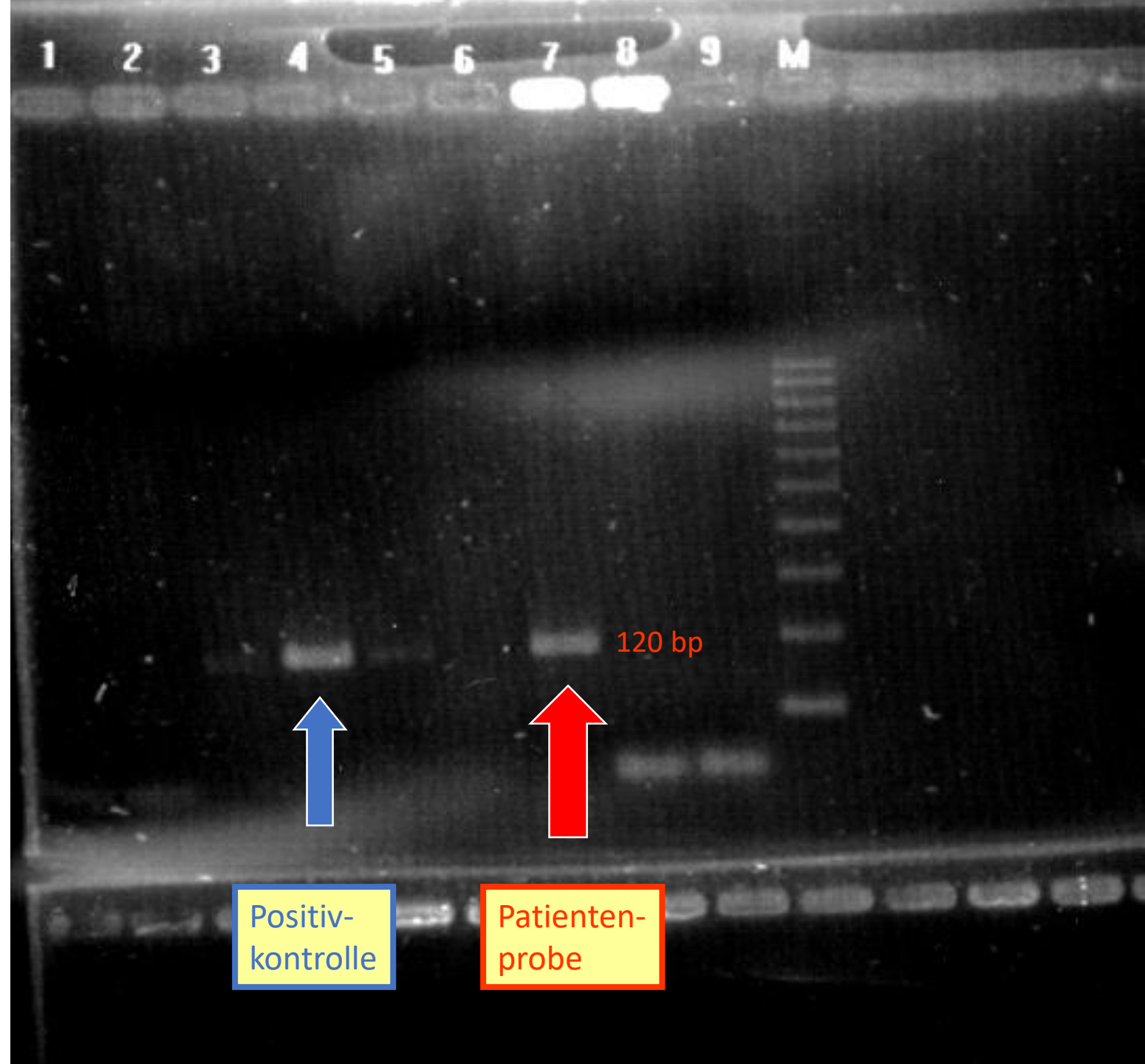
1000μm



unspezifische infektiöse Colitis

100µm

Molekular-
pathologischer
Nachweis
von Yersinien-
DNA mit
Sequenz
der 16S rRNA
aus dem
Yersinien-
genom



Molekularpathologischer Nachweis von Mykobakterien-DNA

mit nested-PCR :

A. Primer set A

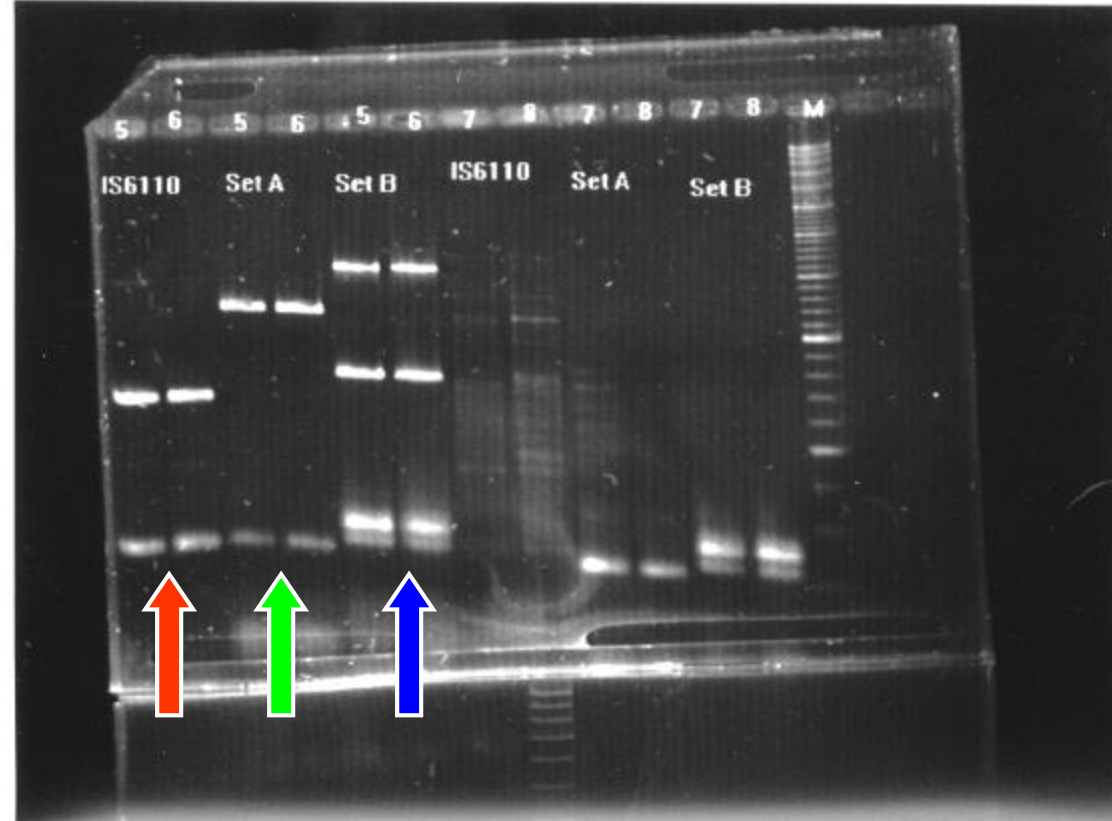
1. *M.gordonae* (221 bp)
2. *M.kansarii* (292 bp)
3. *M.fortuitum* (144 bp)

B. Primer set B

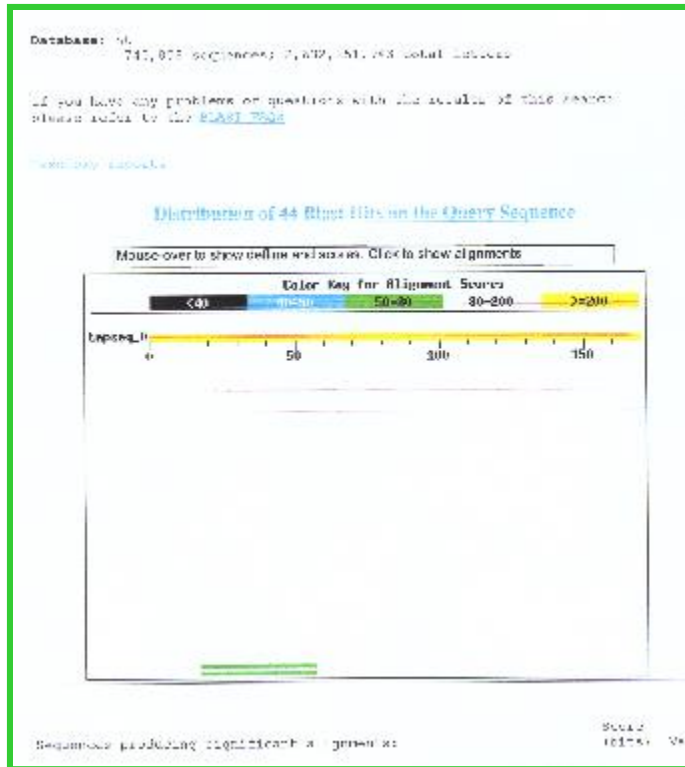
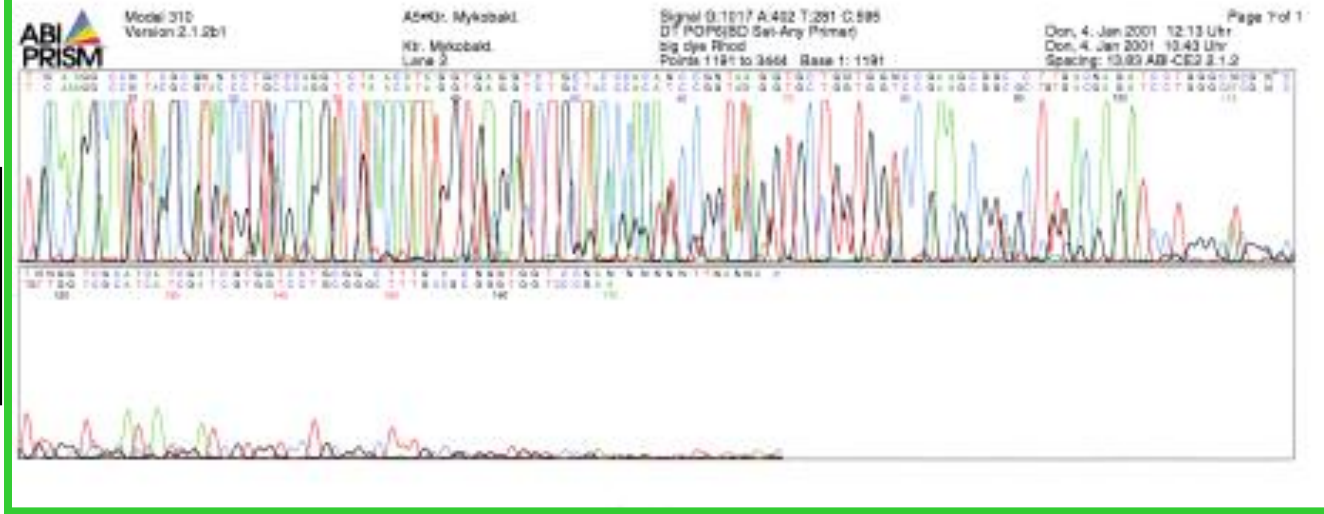
1. *M.avium* (216 bp)
2. *M.malmoense* (236 bp)

C. *M.tuberculosis*

mittels NW des
Insertionssegmentes
IS 6110 (120 bp)



Sequenzierung von
Mycobakterien-DNA
Abgleich mit Datenbank
Blast Search Result



```

Query: 77  ggtcogaagcgggctgtgacgagatcctgggcacgncctgttggtogcaccatcgatcg 136
          |||
Sbjct: 2058 ggtcogaagcgggctg-gacgagatcggcgggaagggtgt-ggcggatcagcgatcg 2001

Query: 137  tggctcctgogggctttgcogggggtggtcccg 168
          |||
Sbjct: 2000 tggctcctgogggctttgcogggggtggtcccg 1969

>
      Mycobacterium tuberculosis strain 9400116 direct repeat 1
      insertion sequence IS6110, 3'-sequence
      Length = 1993

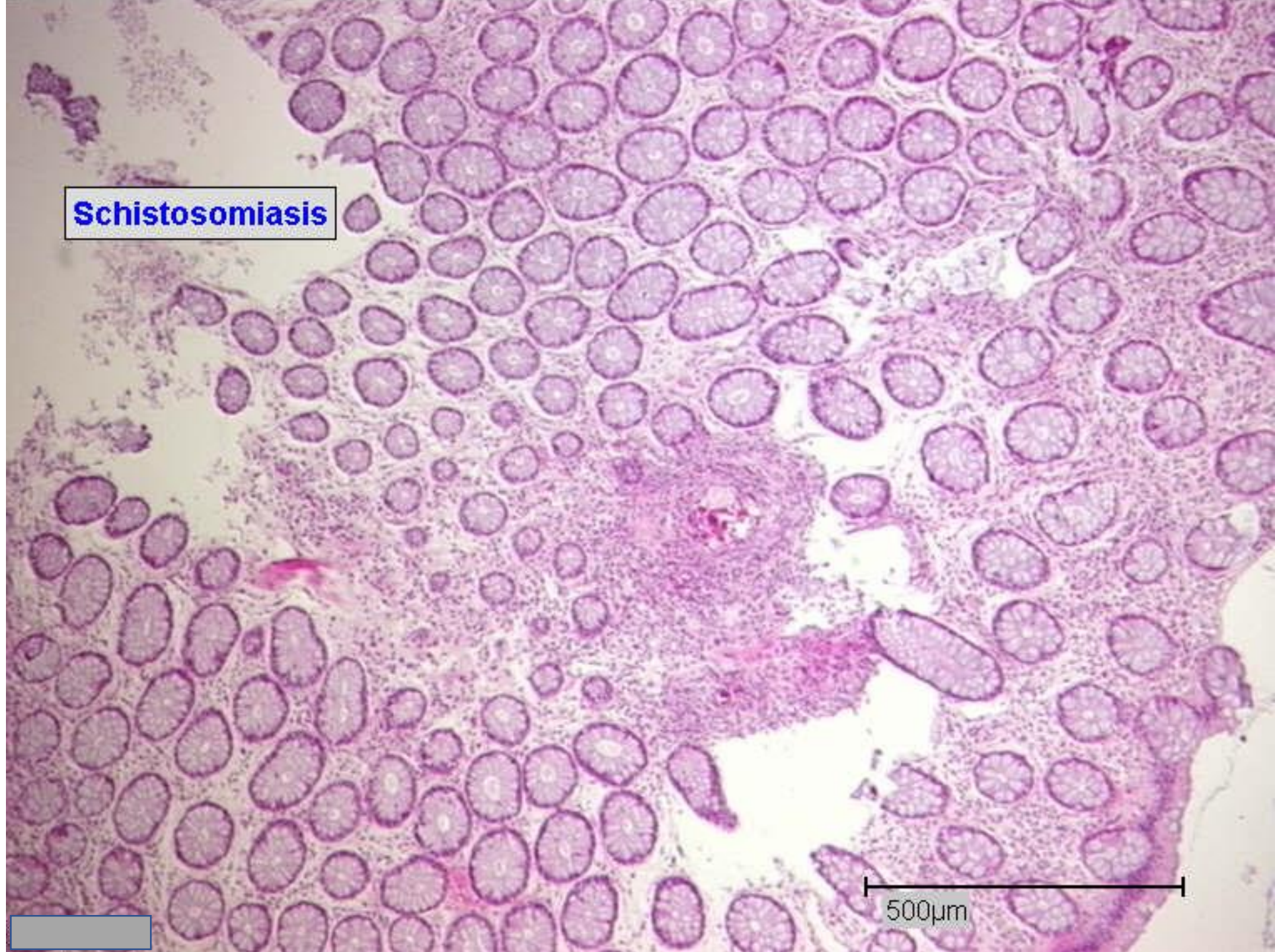
Score = 145 bits (73), Expect = 8e-33
Identities = 136/152 (89%), Gaps = 4/152 (2%)
Strand = Plus / Minus

Query: 18  accctgccagggtctc-acataggtgaggtctgctaccaccacgocggtataggtgctggt 76
          |||
Sbjct: 363  accctgccagggtgcacacataggtgaggtctgctaccaccacgocggt-taggtgctggt 307

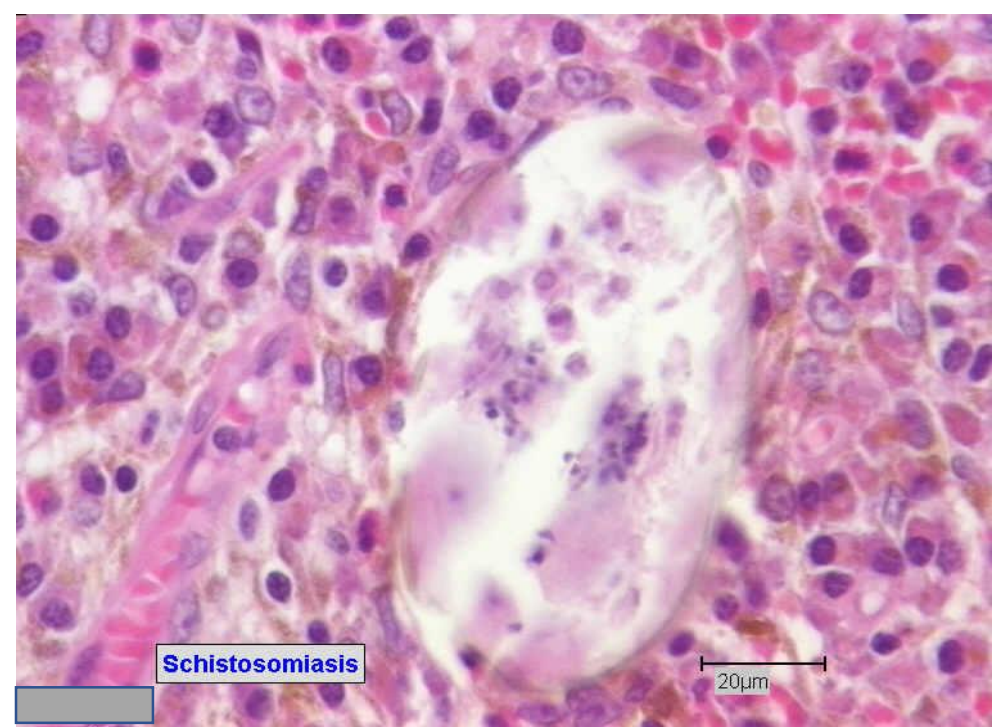
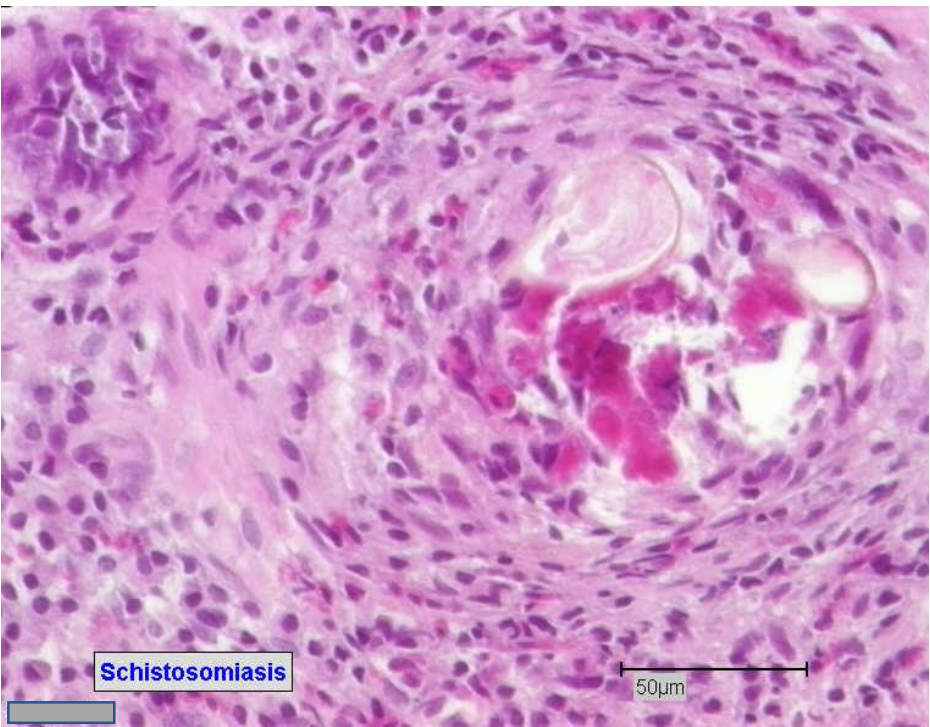
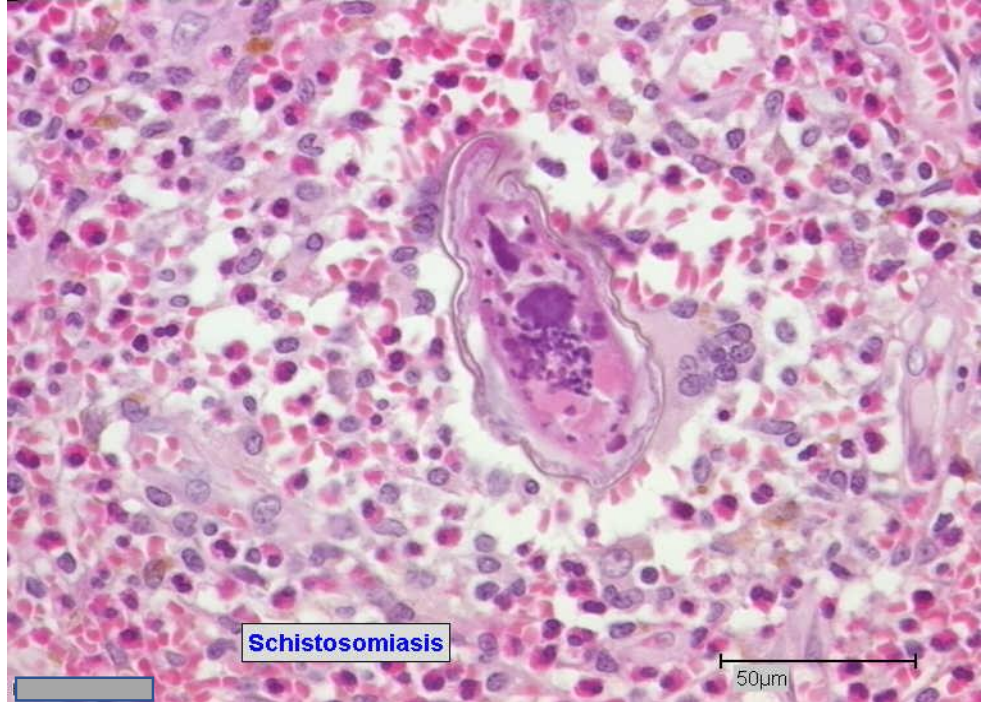
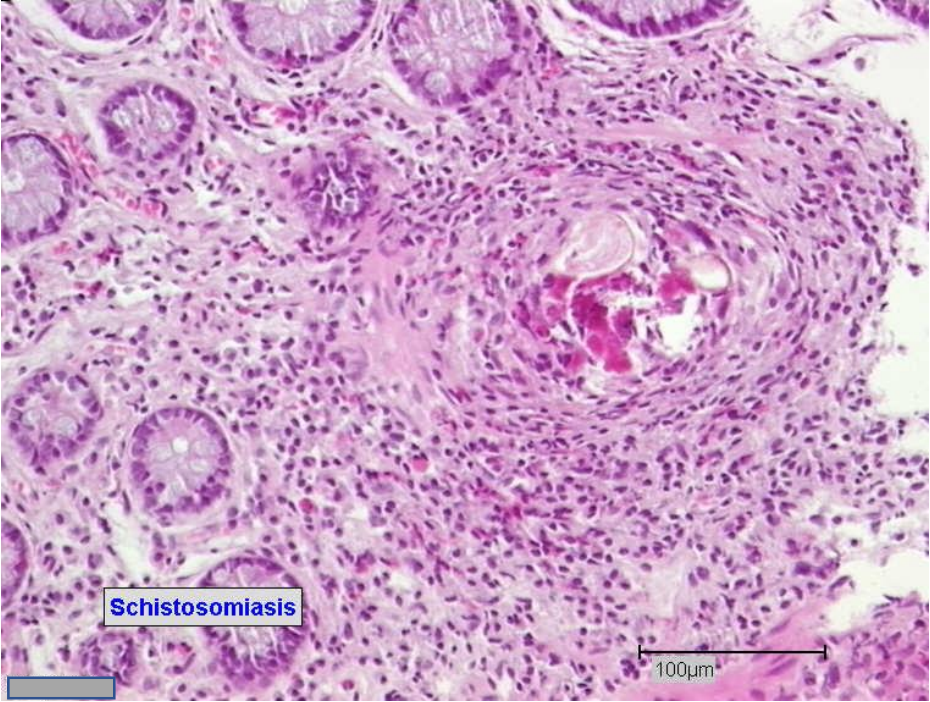
Query: 77  ggtcogaagcgggctgtgacgagatcctgggcacgncctgttggtogcaccatcgatcg 136
          |||
Sbjct: 306  ggtcogaagcgggctg-gacgagatcggcgggaagggtgt-ggcggatcagcgatcg 249

Query: 137  tggctcctgogggctttgcogggggtggtcccg 168
          |||
Sbjct: 248  tggctcctgogggctttgcogggggtggtcccg 217
    
```

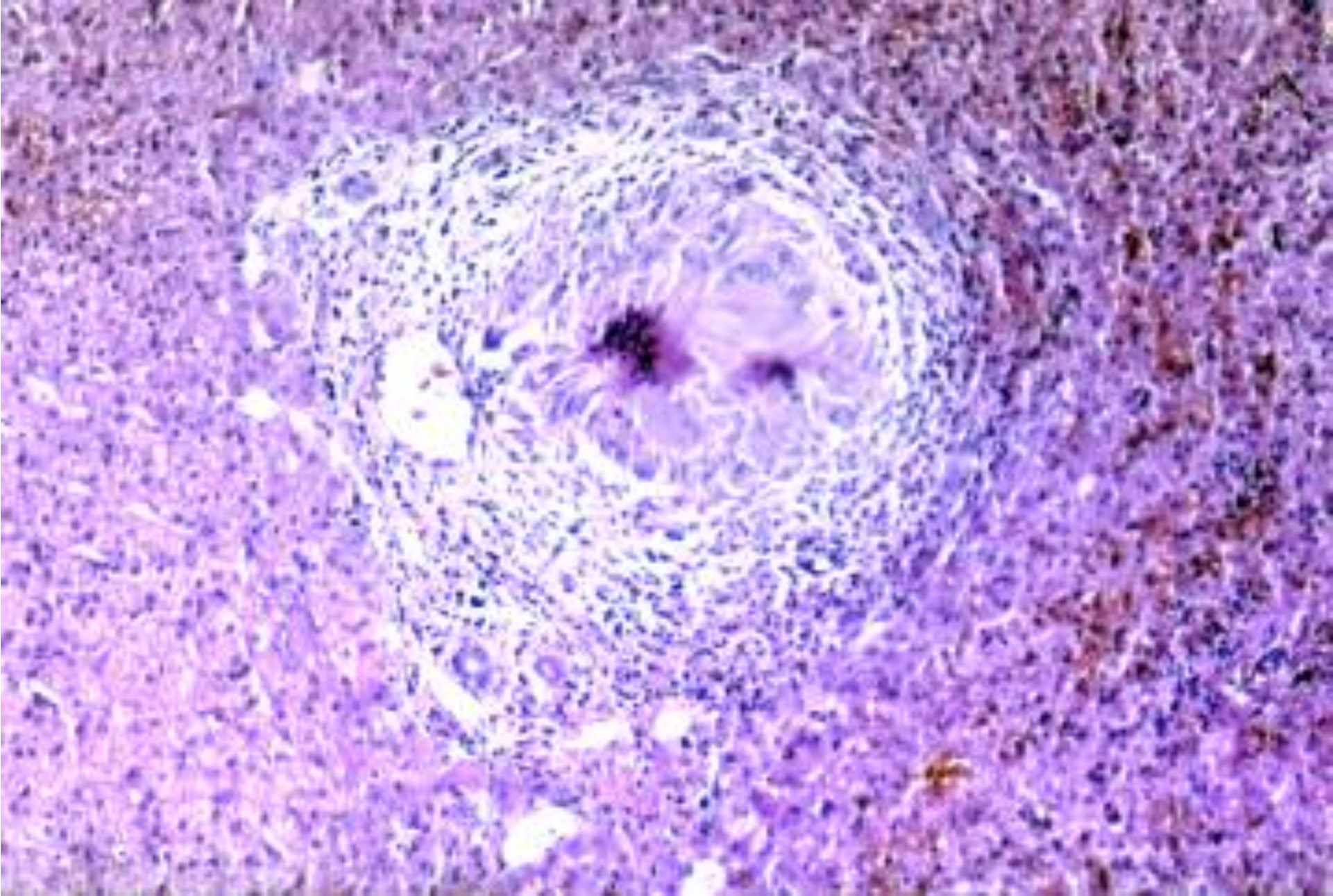
Schistosomiasis



500µm



Leberabszess bei Schistosomiasis



Infektiöse Colitiden

- Amöbiasis
- Coccidiomykose
- Coccidiosporidiose

