

retroperitoneales Leiomyosarkom

Falldemonstration weiblich 67 Jahre alt

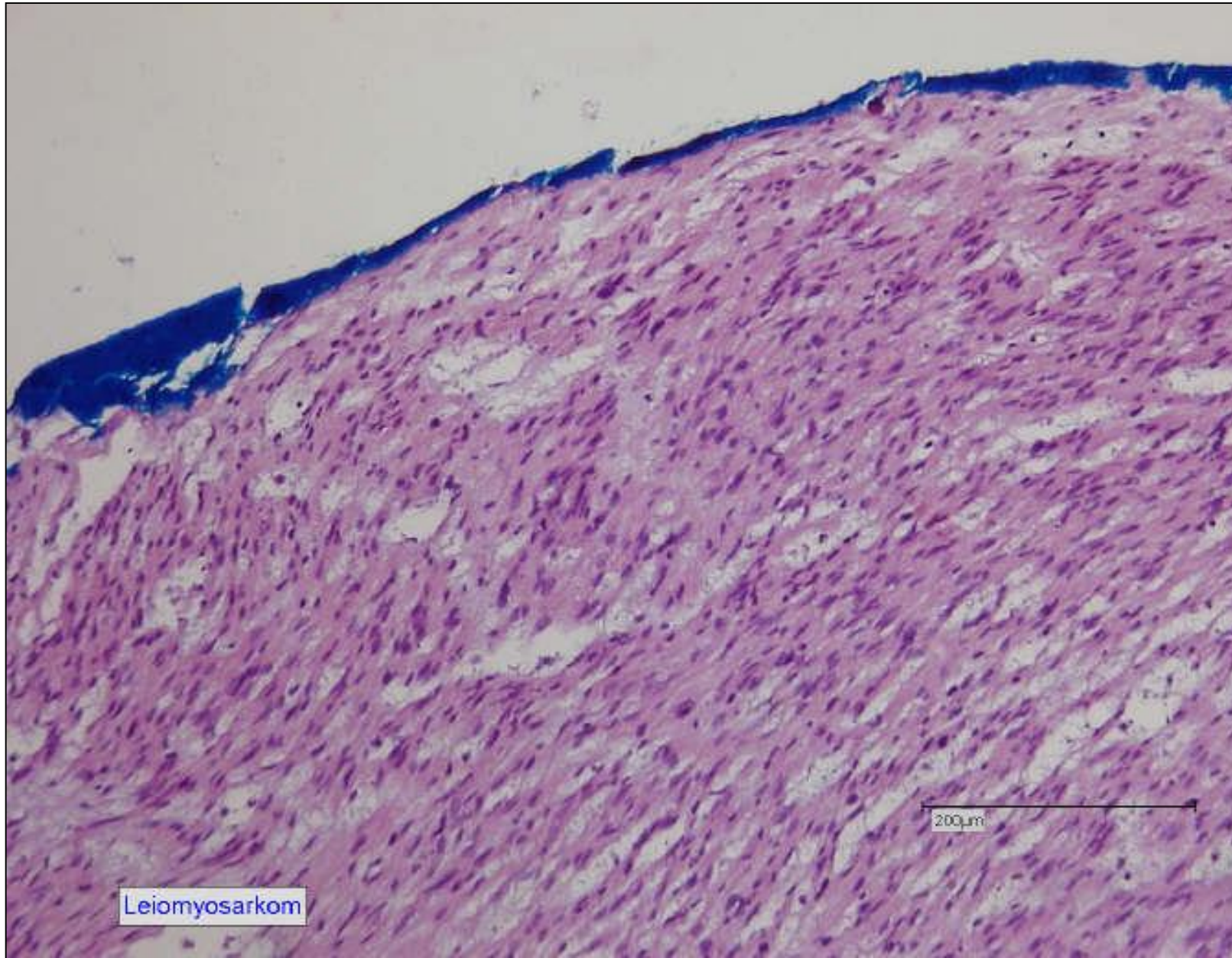
1. PE Unterbauchtumor : zwei max. 2.5 cm hellgraue Exzidate (19.08.2004)
2. Aszites : 1.0 ml rötlicher Flüssigkeit (tumorzellnegativ)
3. Histologisch: Leiomyosarkom (durch Weichteilregister bestätigt)
4. „Unterbauch mit Uterus + re.Adnexe“ (07.09.2004)
5. 1050 g schweres retroperitoneales Leiomyosarkom ohne topographisch nachweisbaren Organbezug (ausgehend von glatter Gefäßwandmuskulatur?)

Leiomyosarkom

164.3µm

200µm

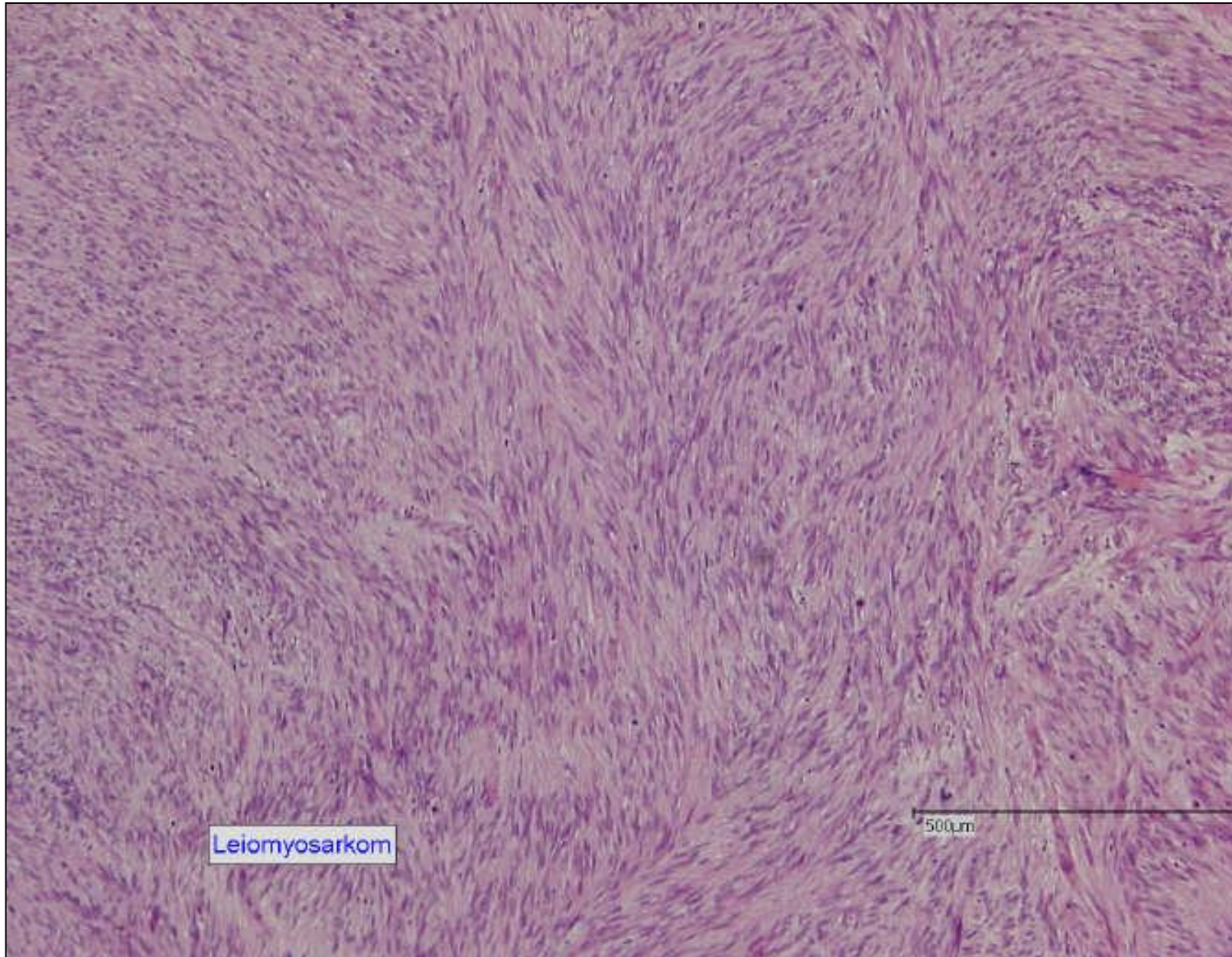




Leiomyosarkom

200µm

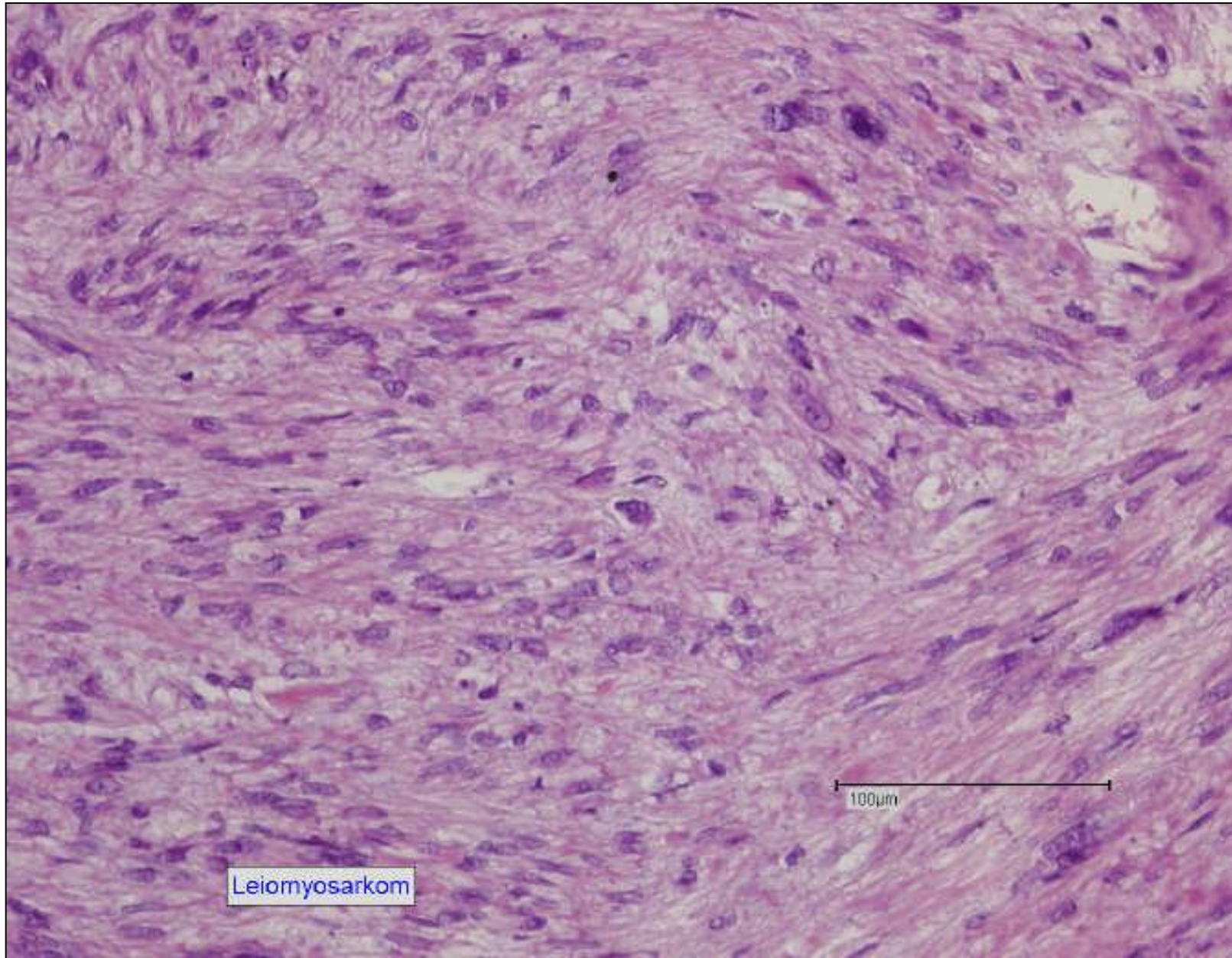




Leiomyosarkom

500µm

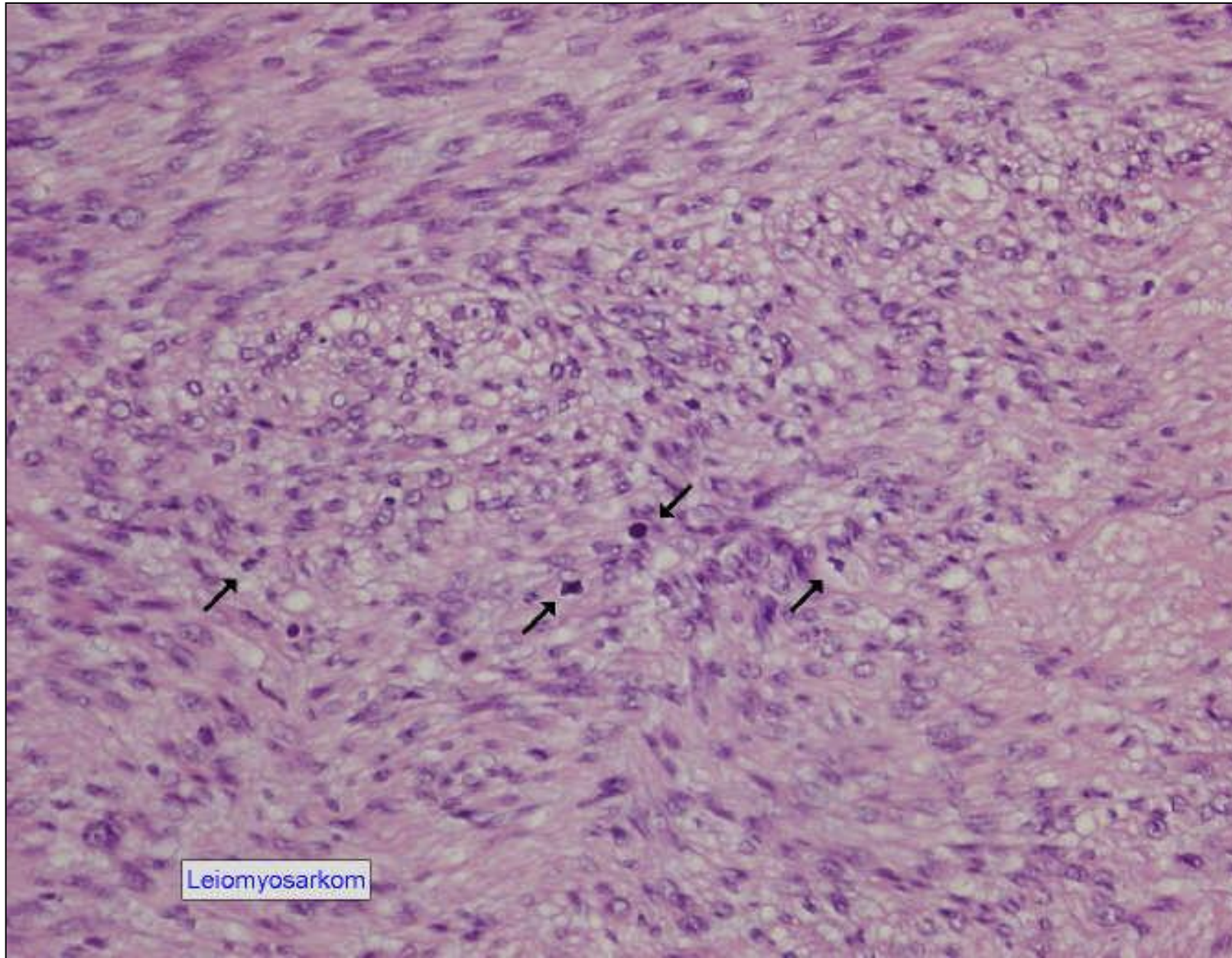




Leiomyosarkom

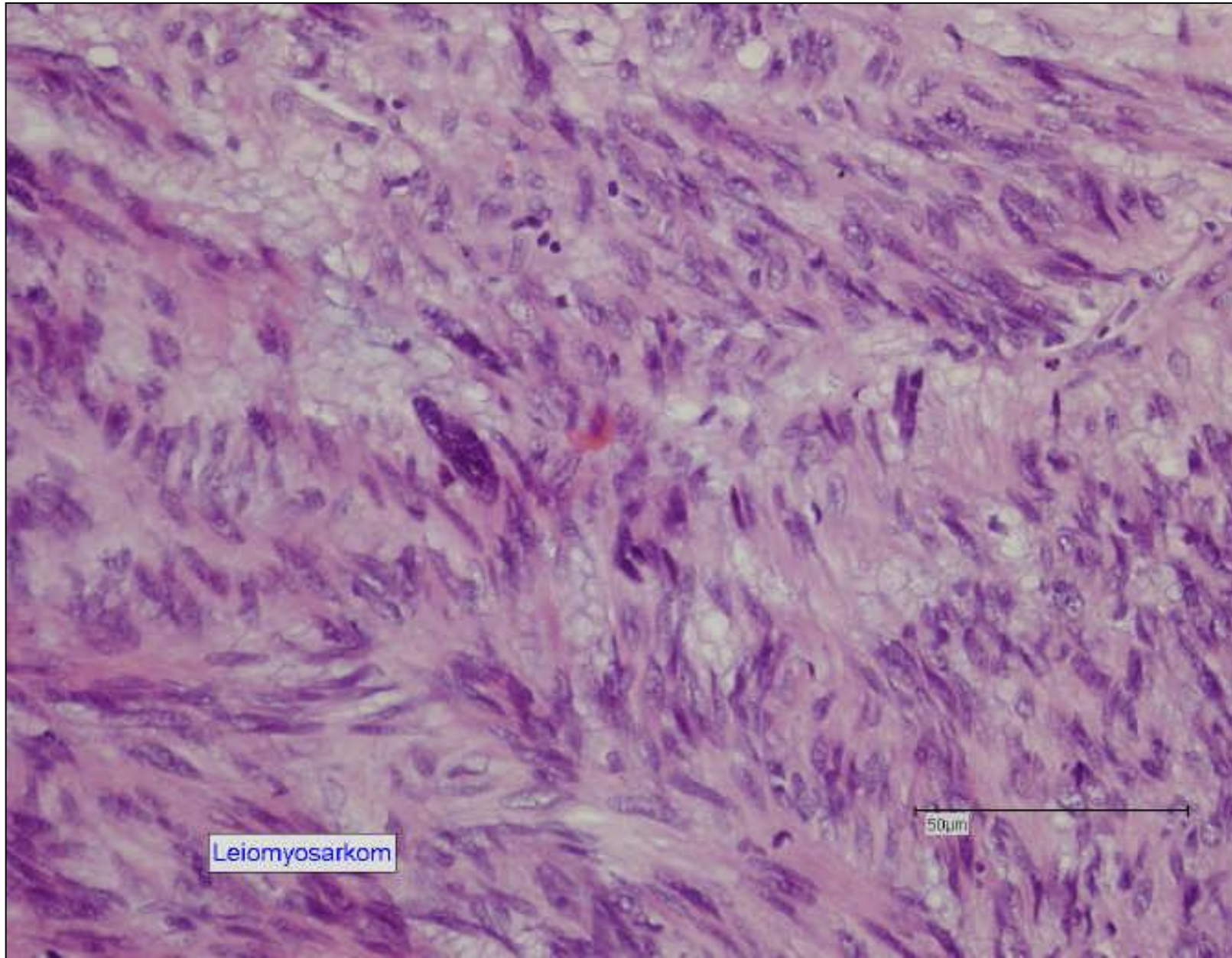
100µm





Leiomyosarkom

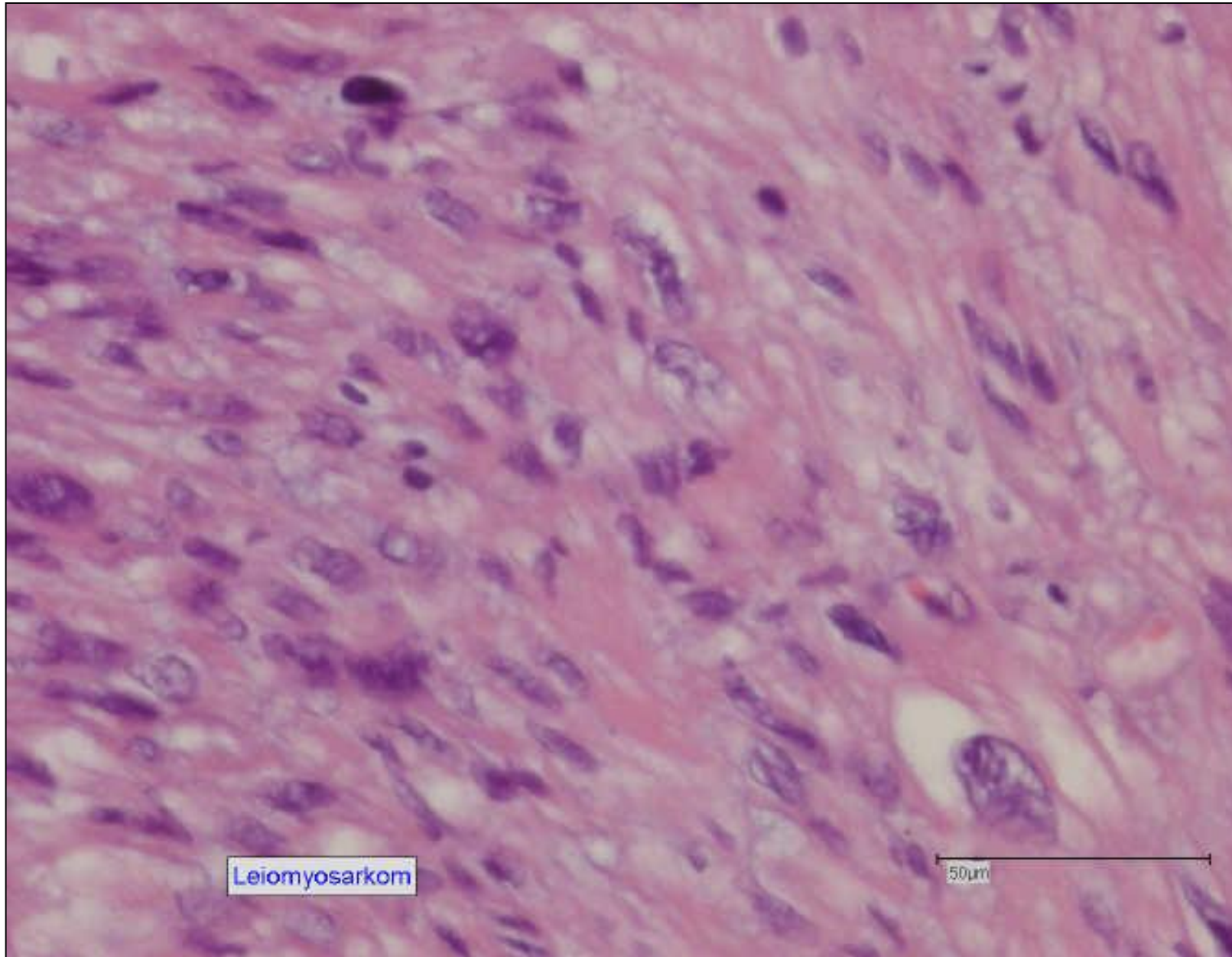




Leiomyosarkom

50µm

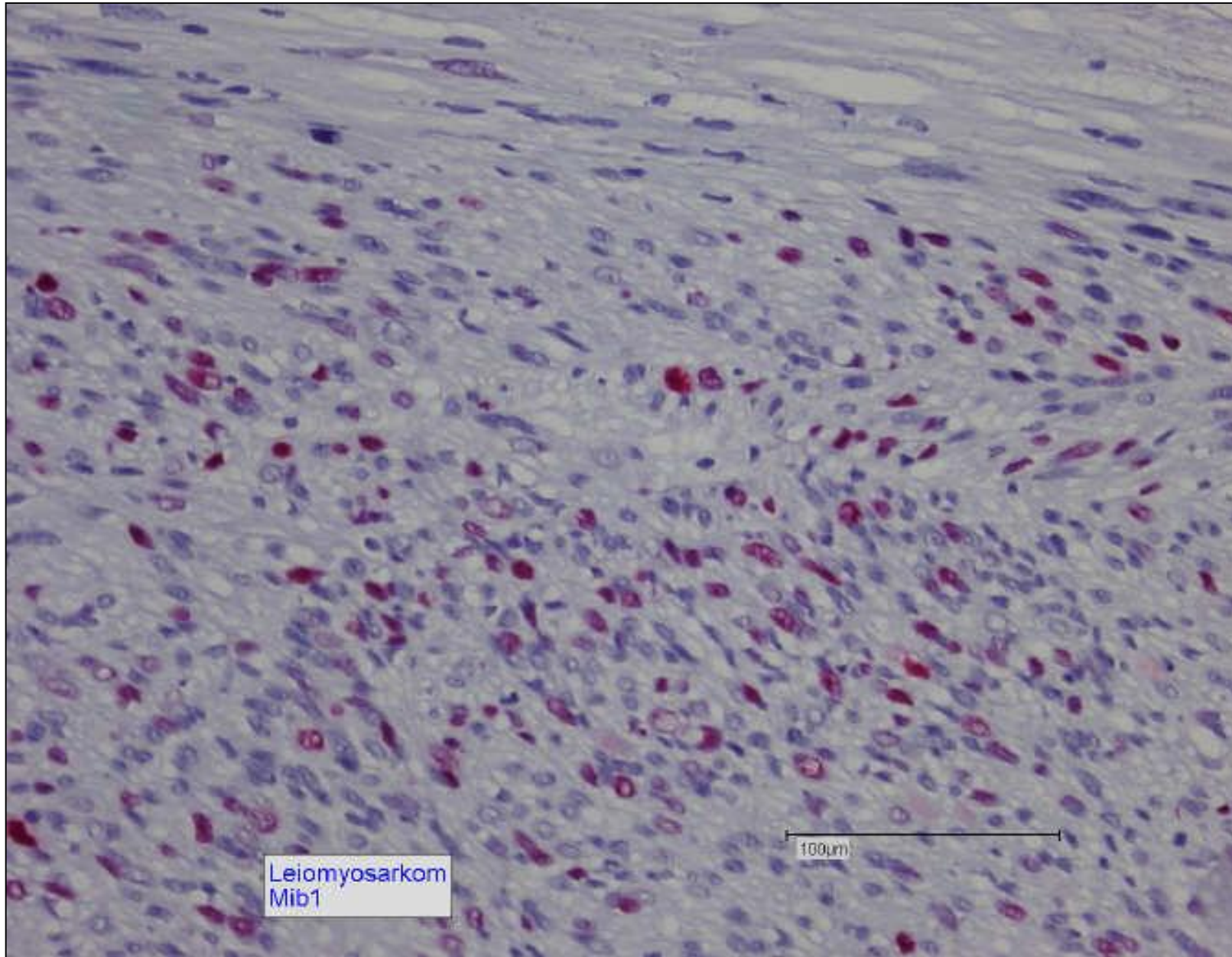




Leiomyosarkom

50µm





Leiomyosarkom
Mib1

100µm

