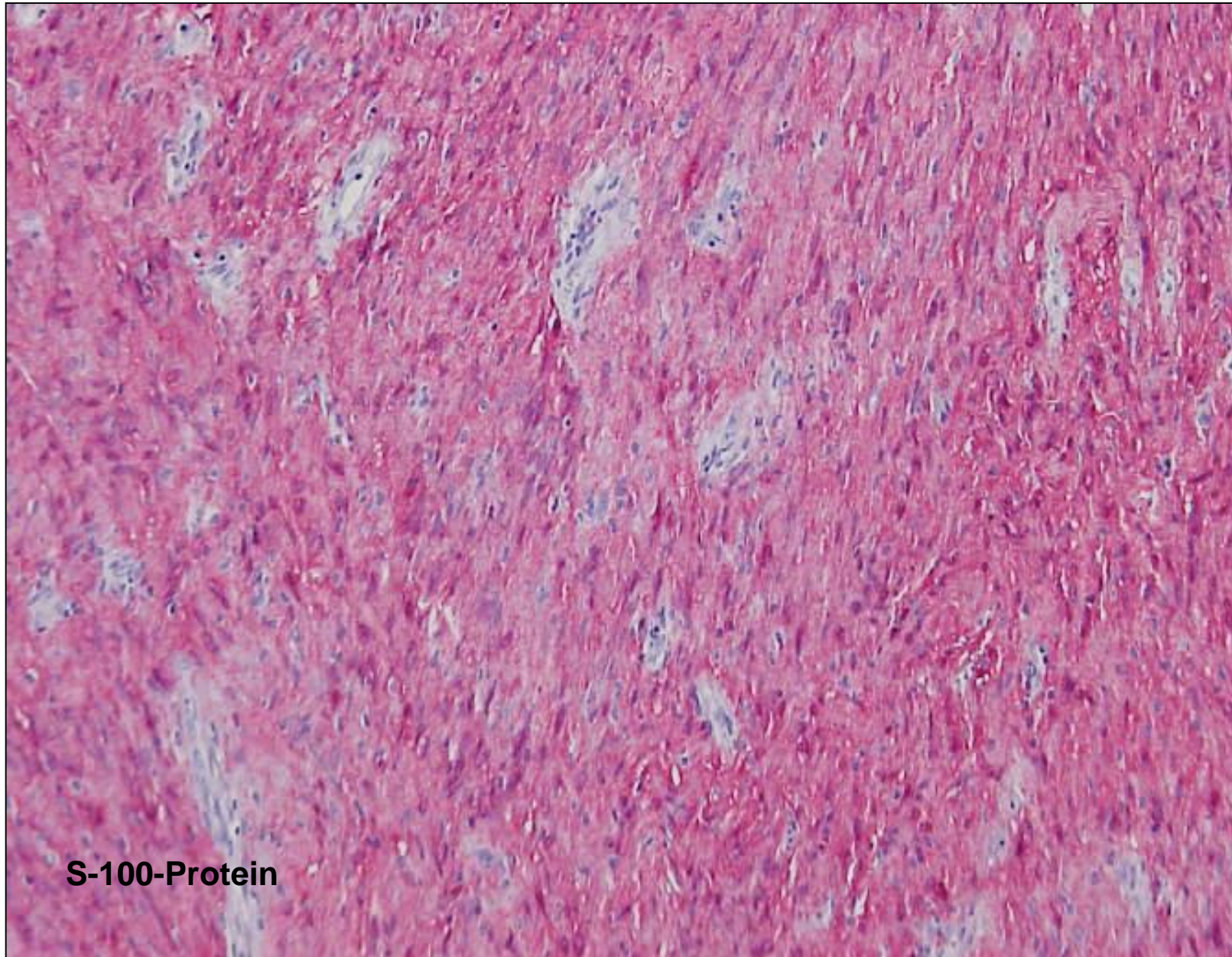


Schwannom der Magenwand

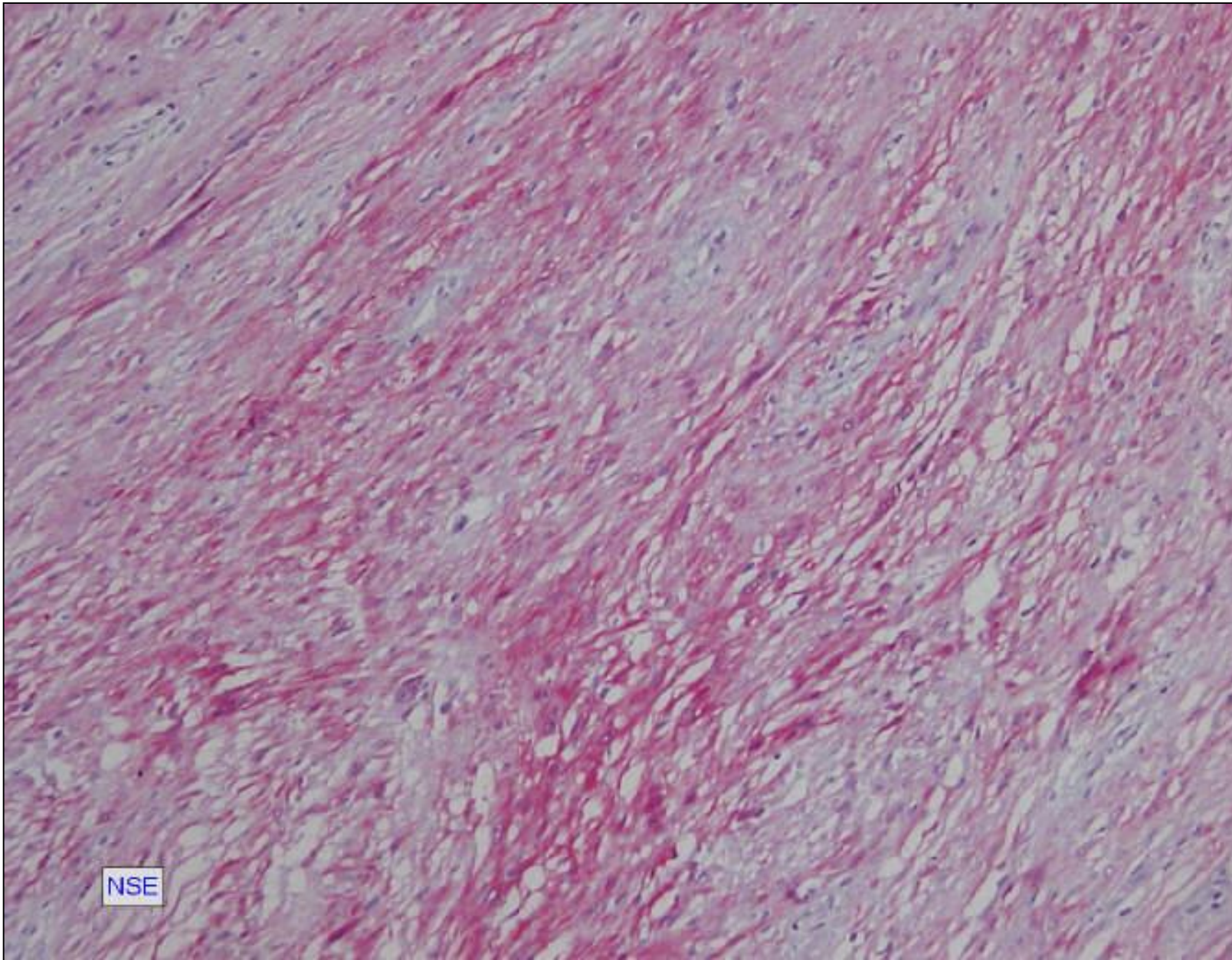
Falldemonstration weiblich 35 Jahre alt

1. Magenwandresektat mit klinischem V.a. Leiomyom des Magens 7.0x4.5x3.5 cm
2. Diagnose : Schwannom (keine Hinweise auf Malignität oder GIST)



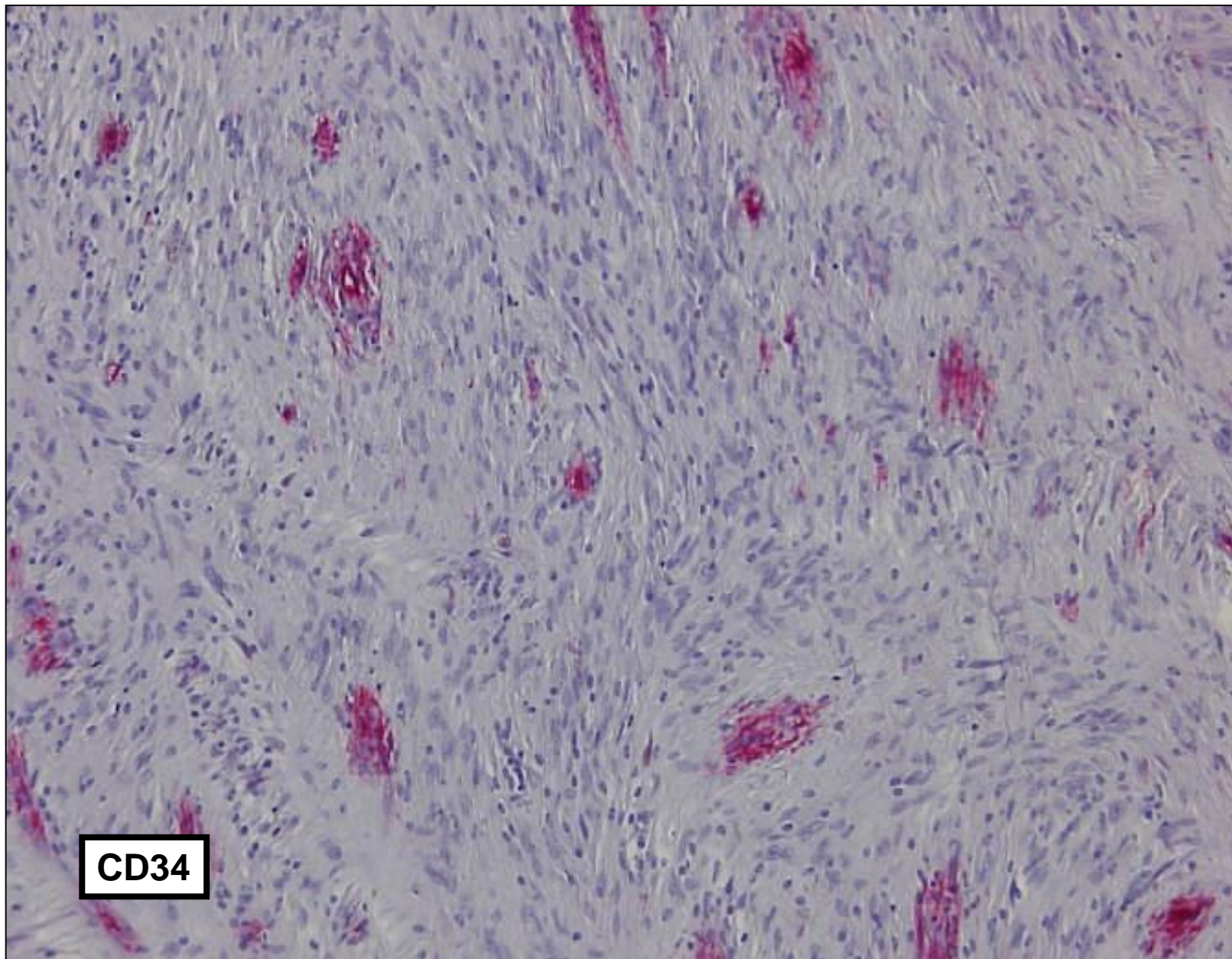
S-100-Protein





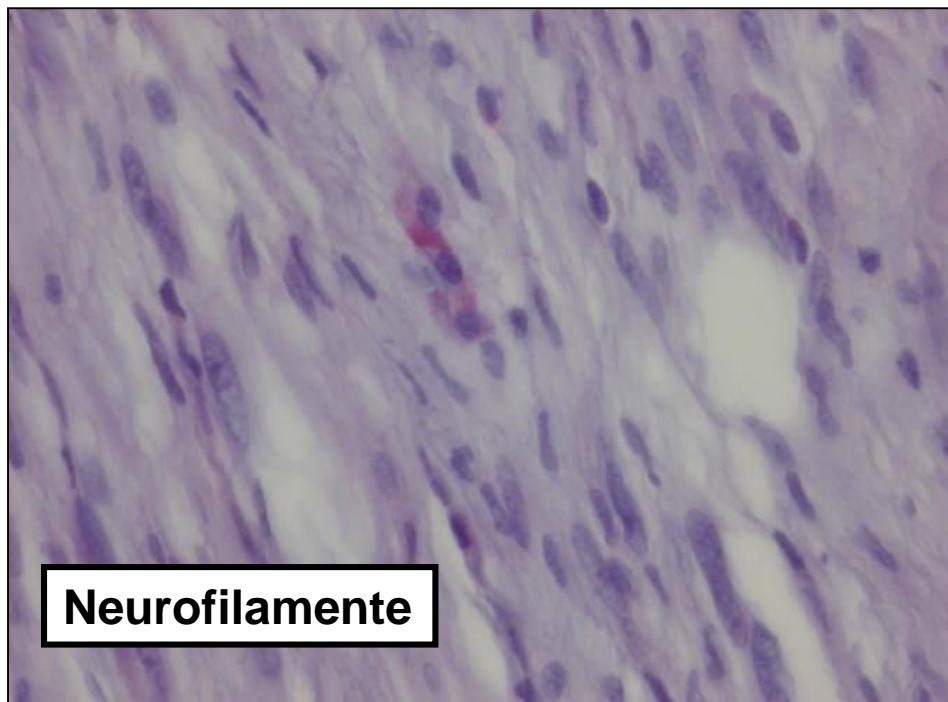
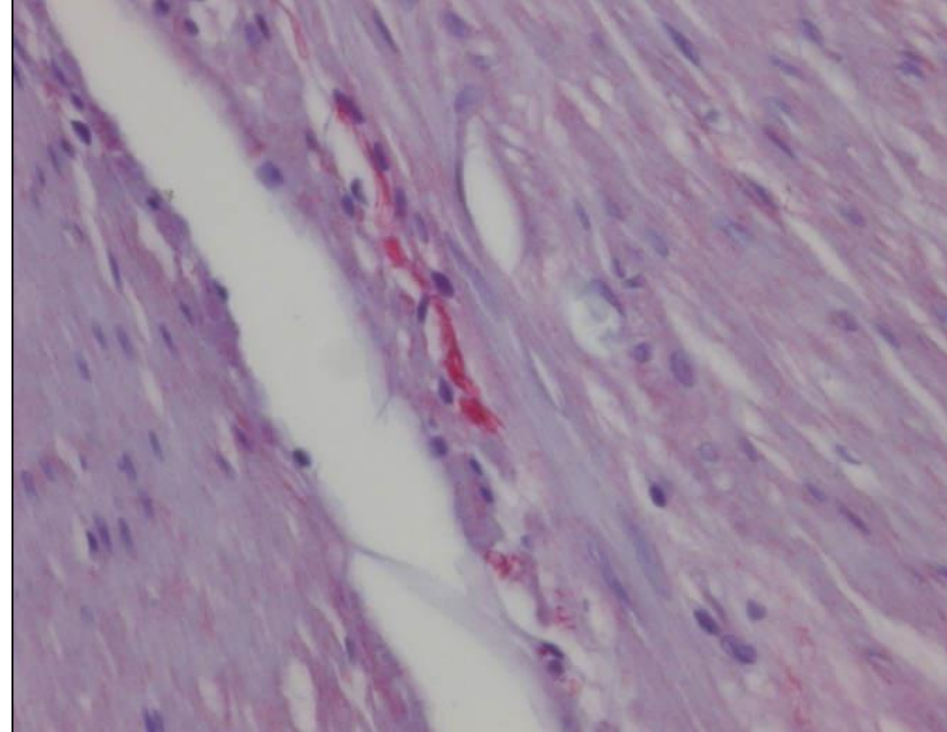
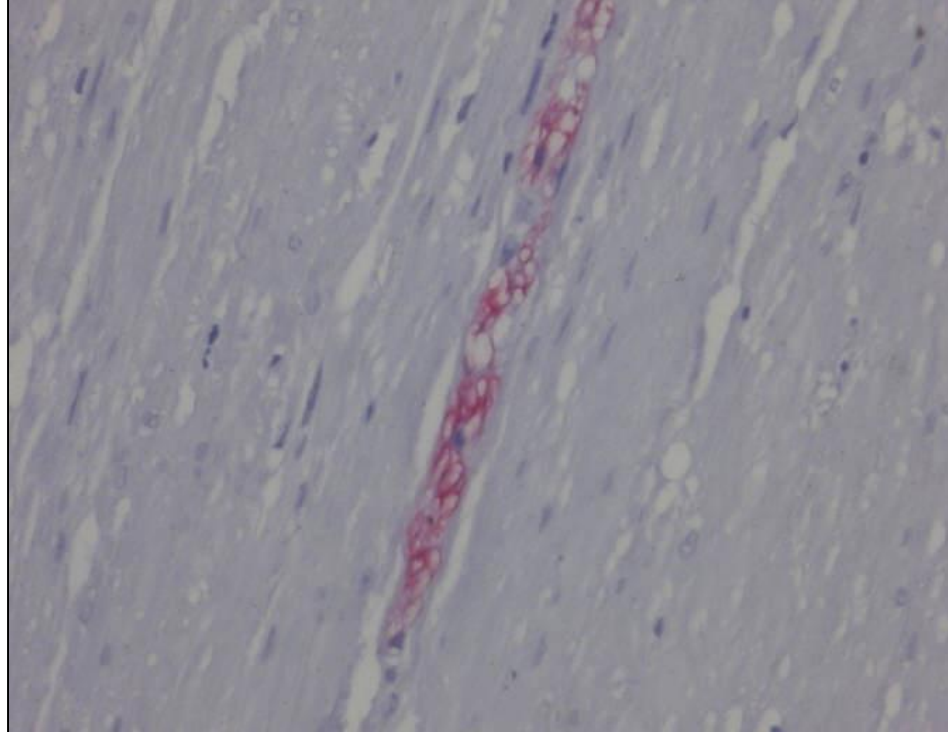
NSE



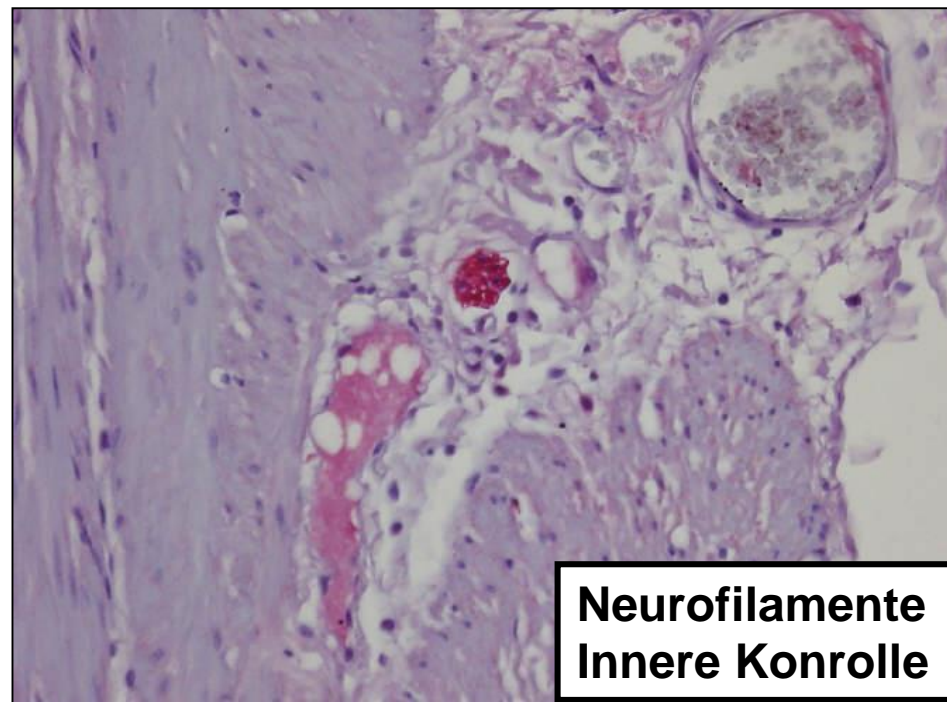


CD34





Neurofilamente



**Neurofilamente
Innere Kontrolle**